

Type A1

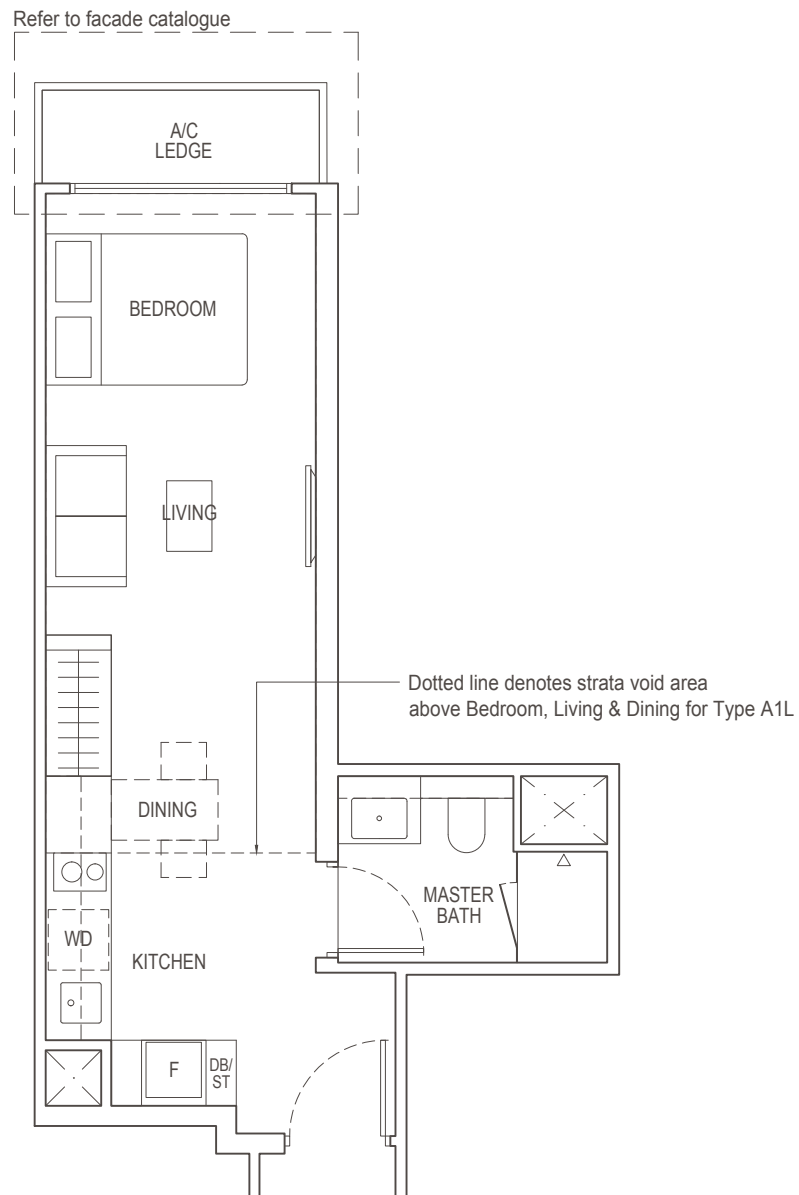
37 sq m / 398 sq ft

Block 2: #02-06 to #23-06, #25-06 to #35-06

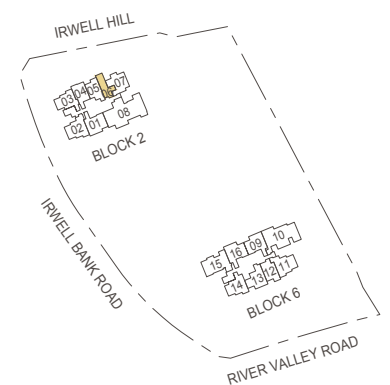
TYPE A1L

57 sq m / 614 sq ft

Inclusive of strata void area of
20 sq m / 215 sq ft above Bedroom, Living & Dining
Block 2: #36-06



Area includes air-con (A/C) ledge, balcony and strata void area where applicable. The plans are subject to change as may be approved by relevant authorities. All floor plans are approximate measurements only and are subject to government re-survey. The balcony shall not be enclosed unless with the approved balcony screen. For an illustration of the approved balcony screen, please refer to the diagram annexed hereto as "Annexure 1".



Key plan is not drawn to scale.



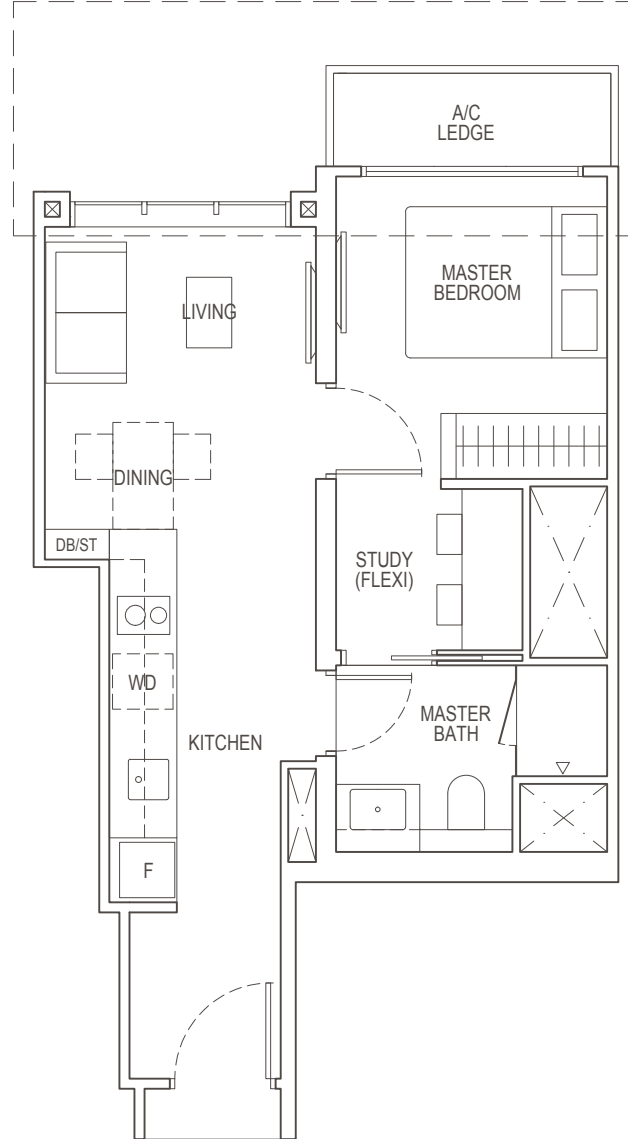
1-Bedroom + Study

Type A2S

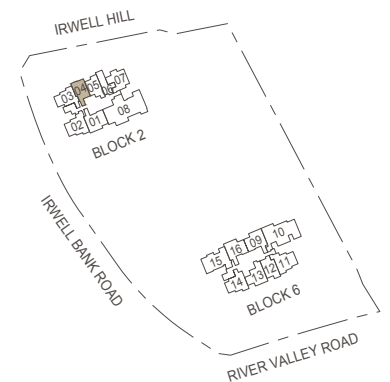
42 sq m / 452 sq ft

Block 2: #03-04, #04-04, #08-04, #10-04
#15-04, #16-04, #21-04, #22-04

Refer to facade catalogue



Area includes air-con (A/C) ledge, balcony and strata void area where applicable. The plans are subject to change as may be approved by relevant authorities. All floor plans are approximate measurements only and are subject to government re-survey. The balcony shall not be enclosed unless with the approved balcony screen. For an illustration of the approved balcony screen, please refer to the diagram annexed hereto as "Annexure 1".



Key plan is not drawn to scale.



1-Bedroom + Study

Type A2S(b)

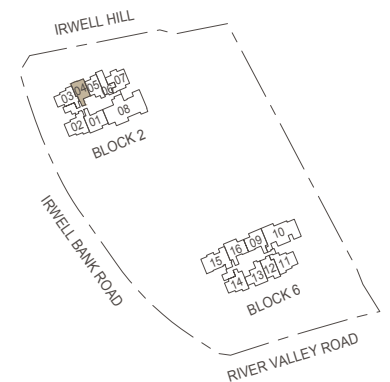
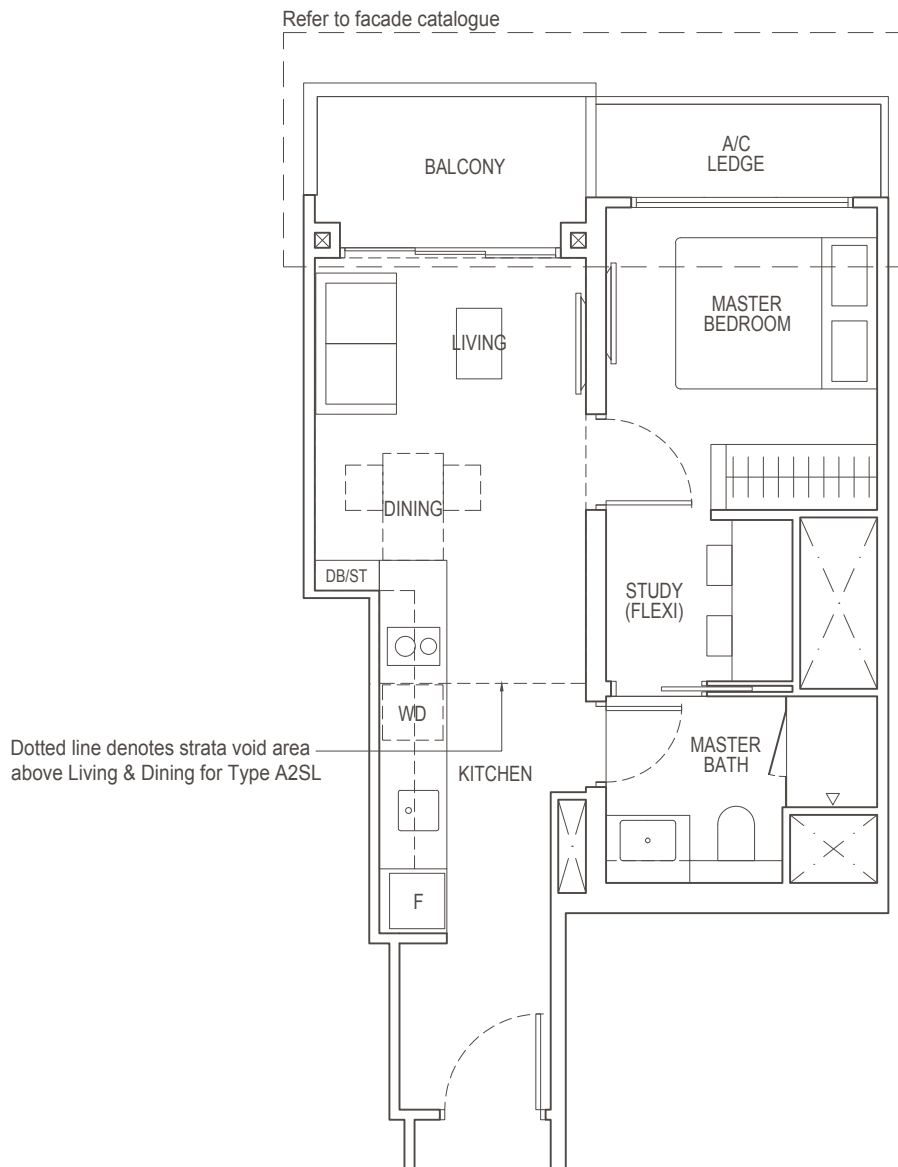
46 sq m / 495 sq ft

Block 2: #02-04, #05-04 to #07-04, #09-04, #11-04 to #14-04
#17-04 to #20-04, #23-04, #25-04 to #35-04

Type A2SL

58 sq m / 624 sq ft

Inclusive of strata void area of
12 sq m / 129 sq ft above Living & Dining
Block 2: #36-04



Area includes air-con (A/C) ledge, balcony and strata void area where applicable. The plans are subject to change as may be approved by relevant authorities. All floor plans are approximate measurements only and are subject to government re-survey. The balcony shall not be enclosed unless with the approved balcony screen. For an illustration of the approved balcony screen, please refer to the diagram annexed hereto as "Annexure 1".

Key plan is not drawn to scale.



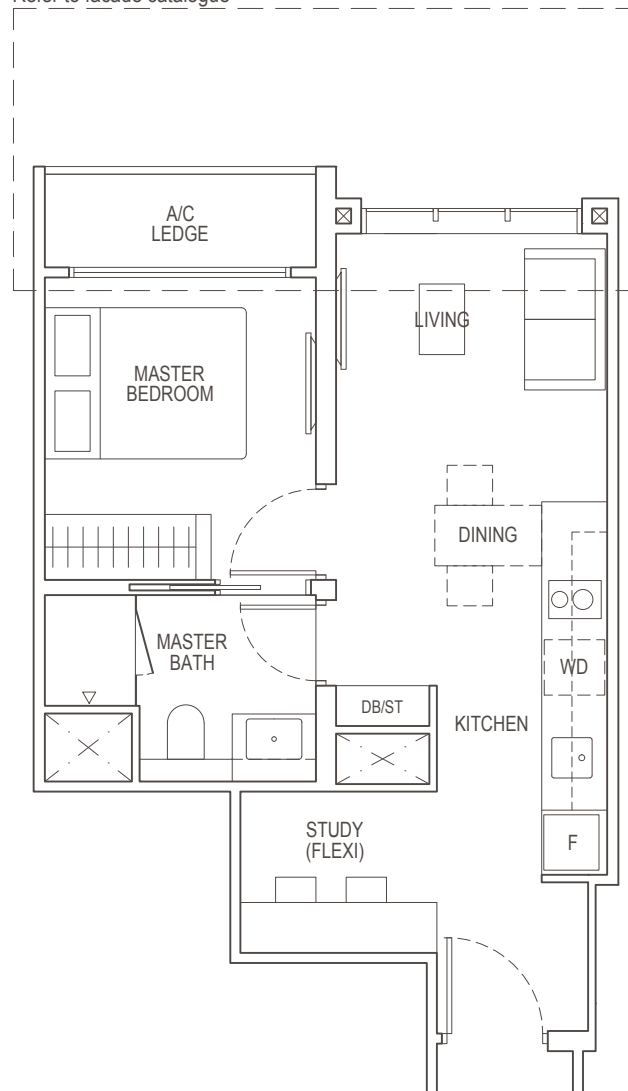
1-Bedroom + Study

Type A3S

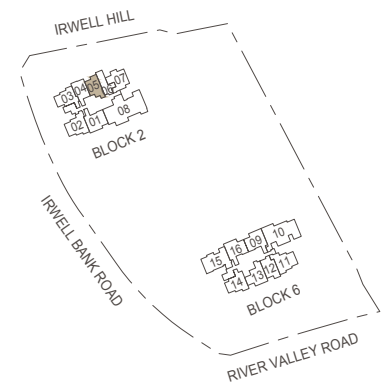
42 sq m / 452 sq ft

Block 2: #04-05, #05-05, #07-05, #08-05
#16-05, #17-05, #22-05

Refer to facade catalogue



Area includes air-con (A/C) ledge, balcony and strata void area where applicable. The plans are subject to change as may be approved by relevant authorities. All floor plans are approximate measurements only and are subject to government re-survey. The balcony shall not be enclosed unless with the approved balcony screen. For an illustration of the approved balcony screen, please refer to the diagram annexed hereto as "Annexure 1".



Key plan is not drawn to scale.



1-Bedroom + Study

Type A3S(b)

46 sq m / 495 sq ft

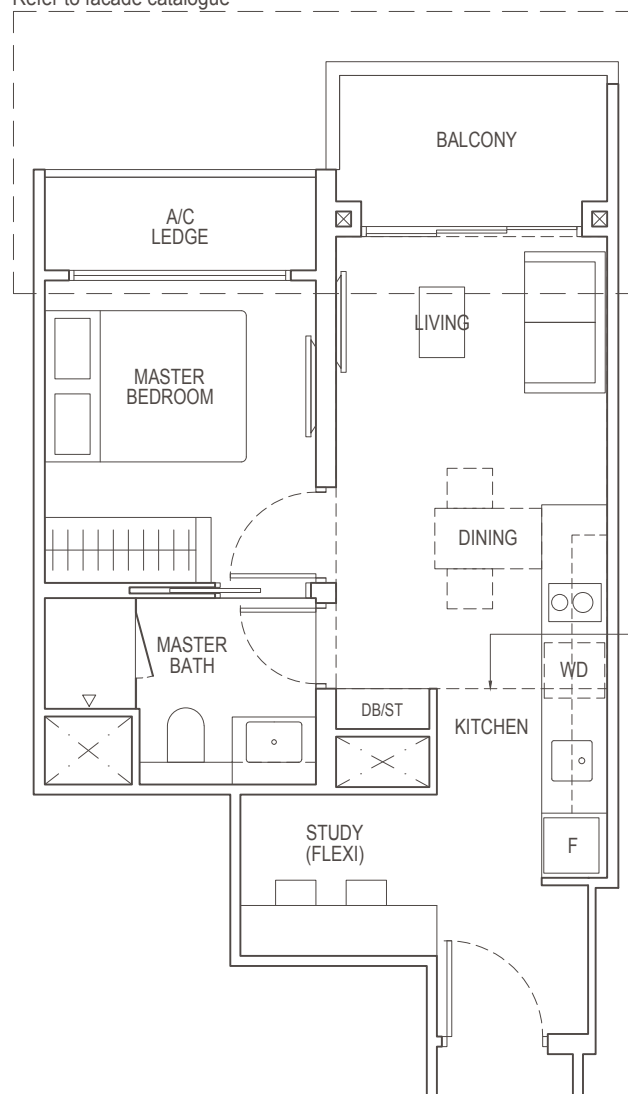
Block 2: #02-05, #03-05, #06-05, #09-05 to #15-05
#18-05 to #21-05, #23-05, #25-05 to #35-05

Type A3SL

60 sq m / 646 sq ft

Inclusive of strata void area of
14 sq m / 151 sq ft above Living & Dining
Block 2: #36-05

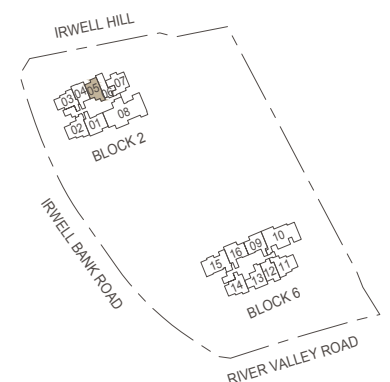
Refer to facade catalogue



Dotted line denotes strata void area above Living & Dining for Type A3SL



Area includes air-con (A/C) ledge, balcony and strata void area where applicable. The plans are subject to change as may be approved by relevant authorities. All floor plans are approximate measurements only and are subject to government re-survey. The balcony shall not be enclosed unless with the approved balcony screen. For an illustration of the approved balcony screen, please refer to the diagram annexed hereto as "Annexure 1".



Key plan is not drawn to scale.

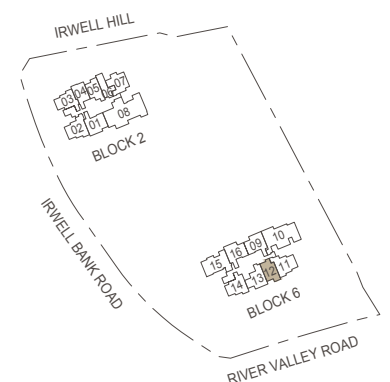
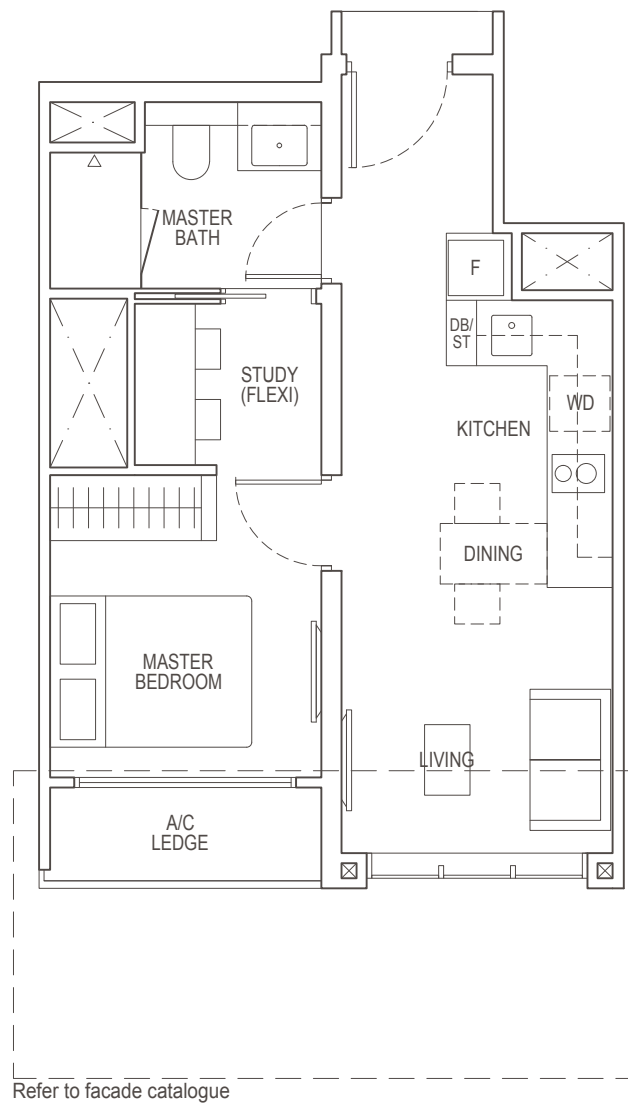


1-Bedroom + Study

Type A4S

42 sq m / 452 sq ft

Block 6: #04-12, #05-12, #08-12, #09-12
#13-12, #15-12, #20-12, #21-12



Area includes air-con (A/C) ledge, balcony and strata void area where applicable. The plans are subject to change as may be approved by relevant authorities. All floor plans are approximate measurements only and are subject to government re-survey. The balcony shall not be enclosed unless with the approved balcony screen. For an illustration of the approved balcony screen, please refer to the diagram annexed hereto as "Annexure 1".

Key plan is not drawn to scale.



1-Bedroom + Study

Type A4S(b)

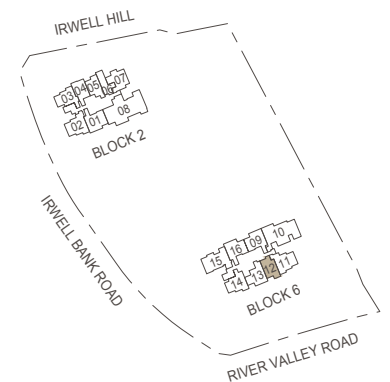
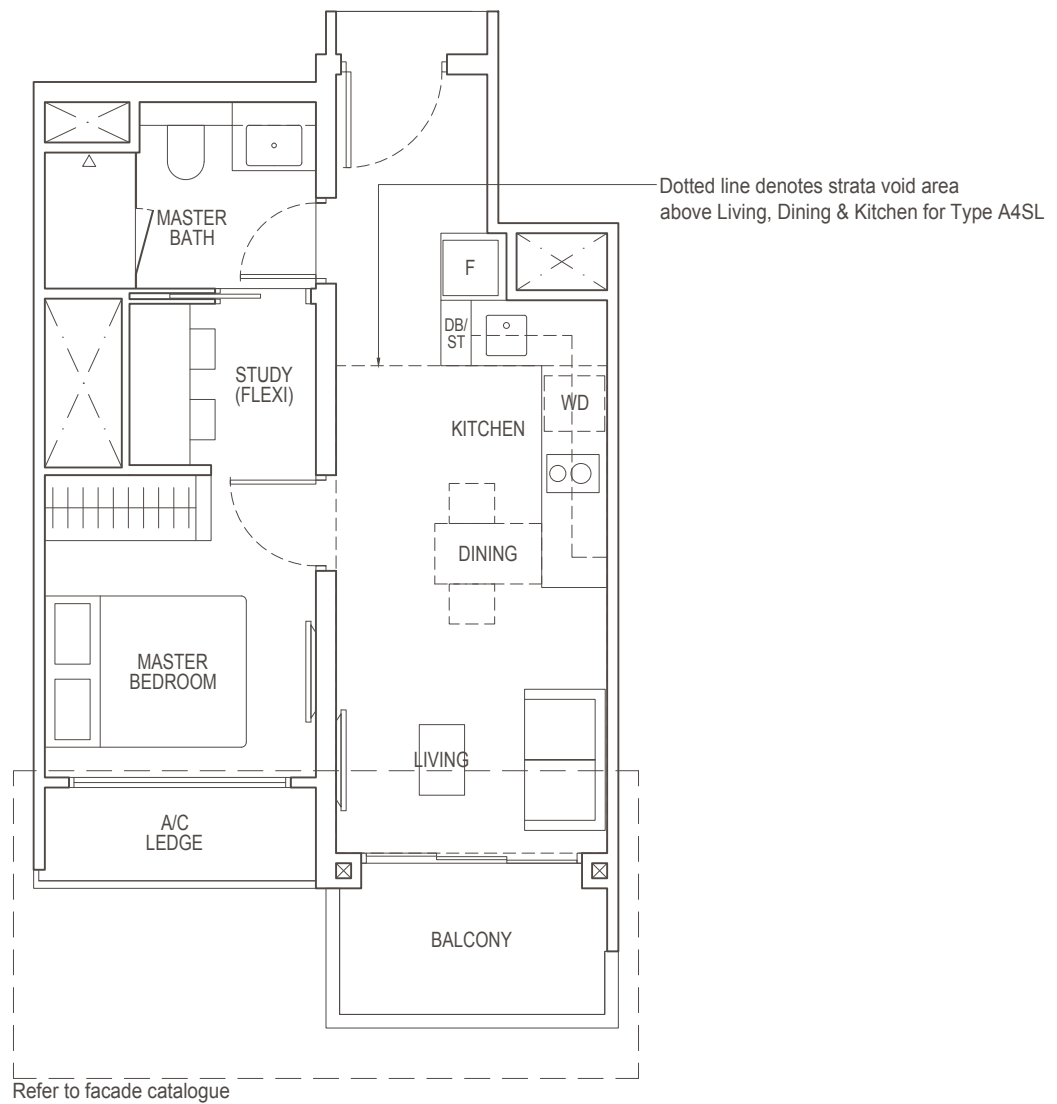
47 sq m / 506 sq ft

Block 6: #02-12, #03-12, #06-12, #07-12
 #10-12 to #12-12, #14-12, #16-12 to #19-12
 #22-12, #23-12, #25-12 to #35-12

Type A4SL

62 sq m / 667sq ft

Inclusive of strata void area of
 15 sq m / 161 sq ft above Living, Dining & Kitchen
 Block 6: #36-12



Area includes air-con (A/C) ledge, balcony and strata void area where applicable. The plans are subject to change as may be approved by relevant authorities. All floor plans are approximate measurements only and are subject to government re-survey. The balcony shall not be enclosed unless with the approved balcony screen. For an illustration of the approved balcony screen, please refer to the diagram annexed hereto as "Annexure 1".

Key plan is not drawn to scale.



2-Bedroom Classic

Type B1(b)

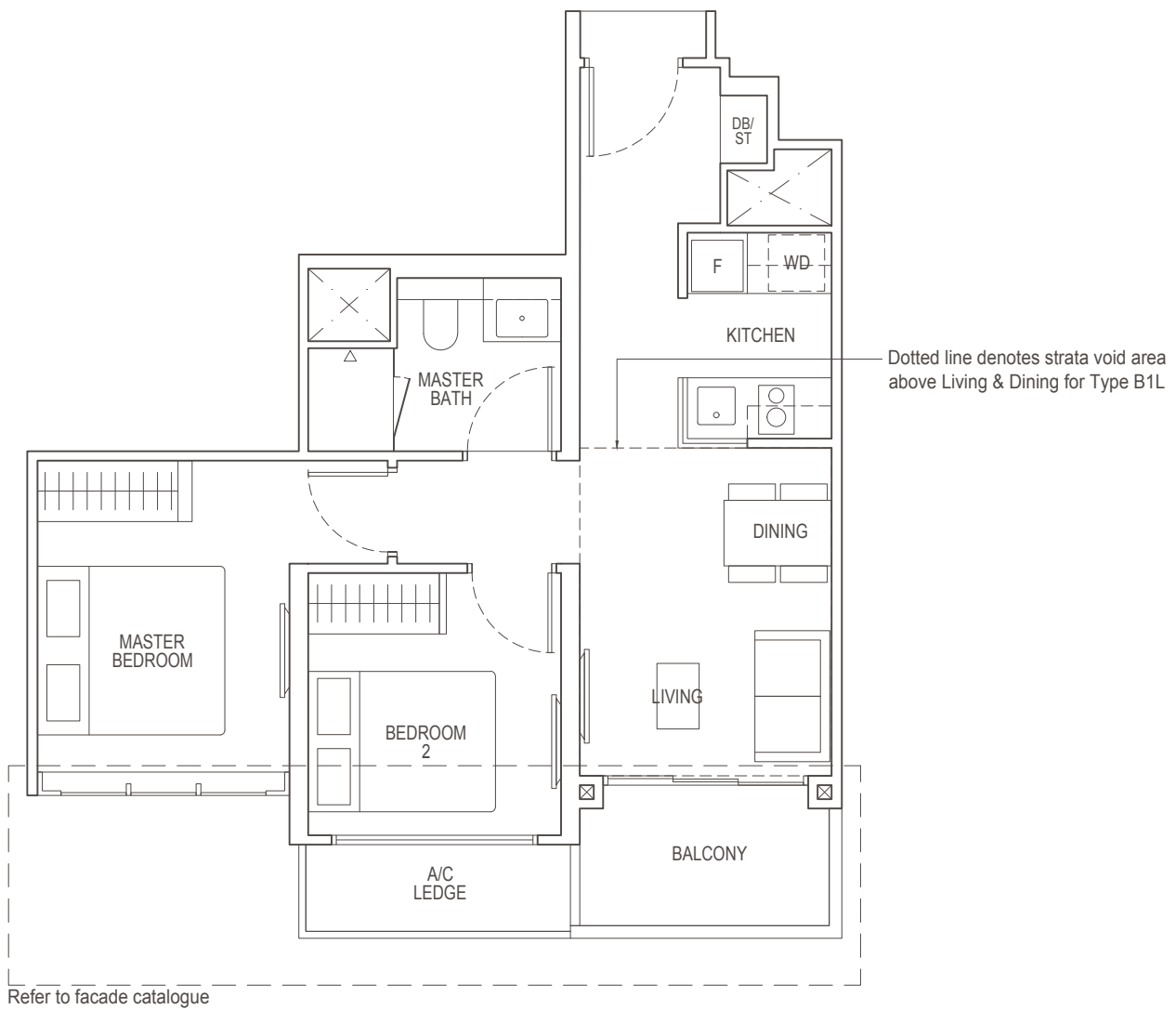
56 sq m / 603 sq ft

Block 6: #02-13 to #23-13, #25-13 to #35-13

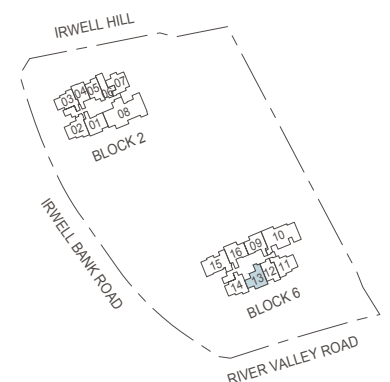
Type B1L

67 sq m / 721 sq ft

Inclusive of strata void area of
11 sq m / 118 sq ft above Living & Dining
Block 6: #36-13



Area includes air-con (A/C) ledge, balcony and strata void area where applicable. The plans are subject to change as may be approved by relevant authorities. All floor plans are approximate measurements only and are subject to government re-survey. The balcony shall not be enclosed unless with the approved balcony screen. For an illustration of the approved balcony screen, please refer to the diagram annexed hereto as "Annexure 1".



Key plan is not drawn to scale.



2-Bedroom Classic

Type B2(b)

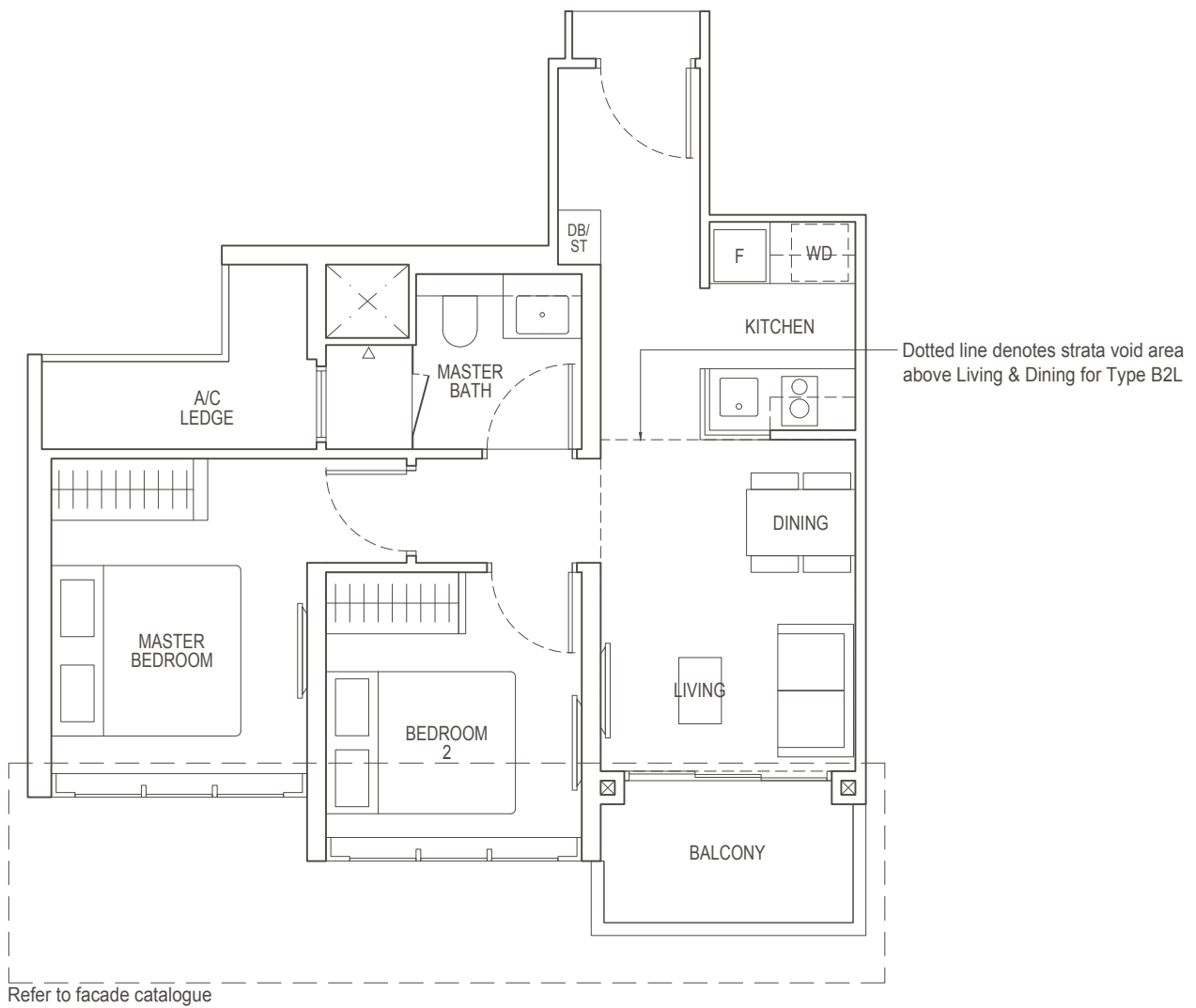
57 sq m / 614 sq ft

Block 6: #02-14 to #23-14, #25-14 to #35-14

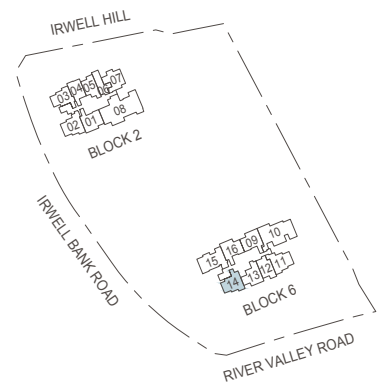
Type B2L

68 sq m / 732 sq ft

Inclusive of strata void area of
11 sq m / 118 sq ft above Living & Dining
Block 6: #36-14



Area includes air-con (A/C) ledge, balcony and strata void area where applicable. The plans are subject to change as may be approved by relevant authorities. All floor plans are approximate measurements only and are subject to government re-survey. The balcony shall not be enclosed unless with the approved balcony screen. For an illustration of the approved balcony screen, please refer to the diagram annexed hereto as "Annexure 1".



Key plan is not drawn to scale.



2-Bedroom Classic

Type B3(b)

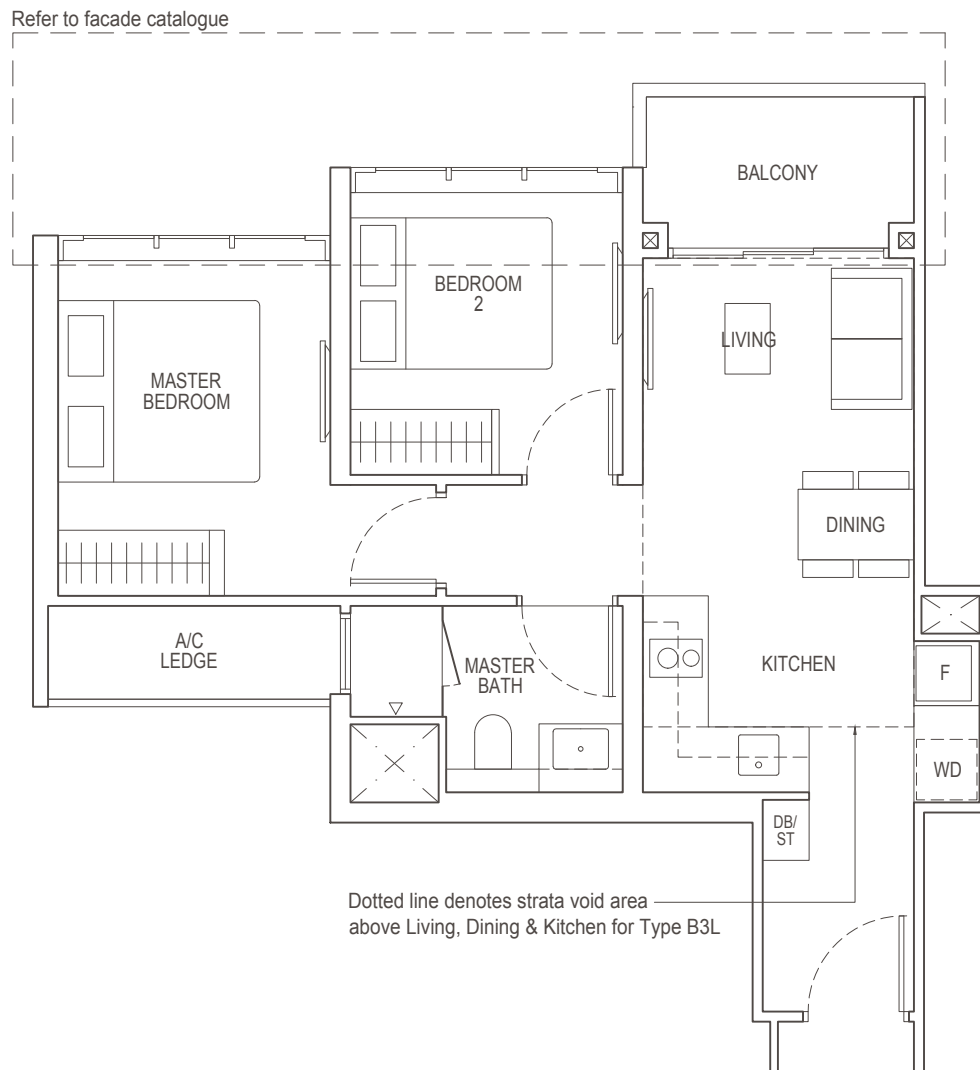
57 sq m / 614 sq ft

Block 2: #02-03 to #23-03, #25-03 to #35-03

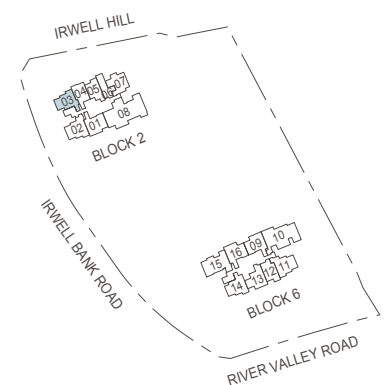
Type B3L

71 sq m / 764 sq ft

Inclusive of strata void area of
14 sq m / 151 sq ft above Living, Dining & Kitchen
Block 2: #36-03



Area includes air-con (A/C) ledge, balcony and strata void area where applicable. The plans are subject to change as may be approved by relevant authorities. All floor plans are approximate measurements only and are subject to government re-survey. The balcony shall not be enclosed unless with the approved balcony screen. For an illustration of the approved balcony screen, please refer to the diagram annexed hereto as "Annexure 1".



Key plan is not drawn to scale.



2-Bedroom Classic

Type B4(b)

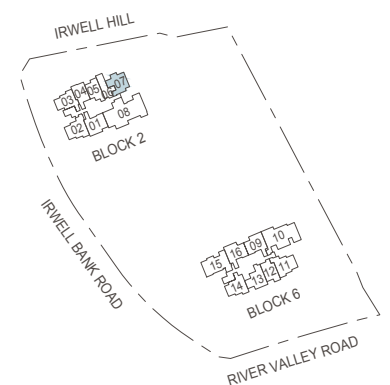
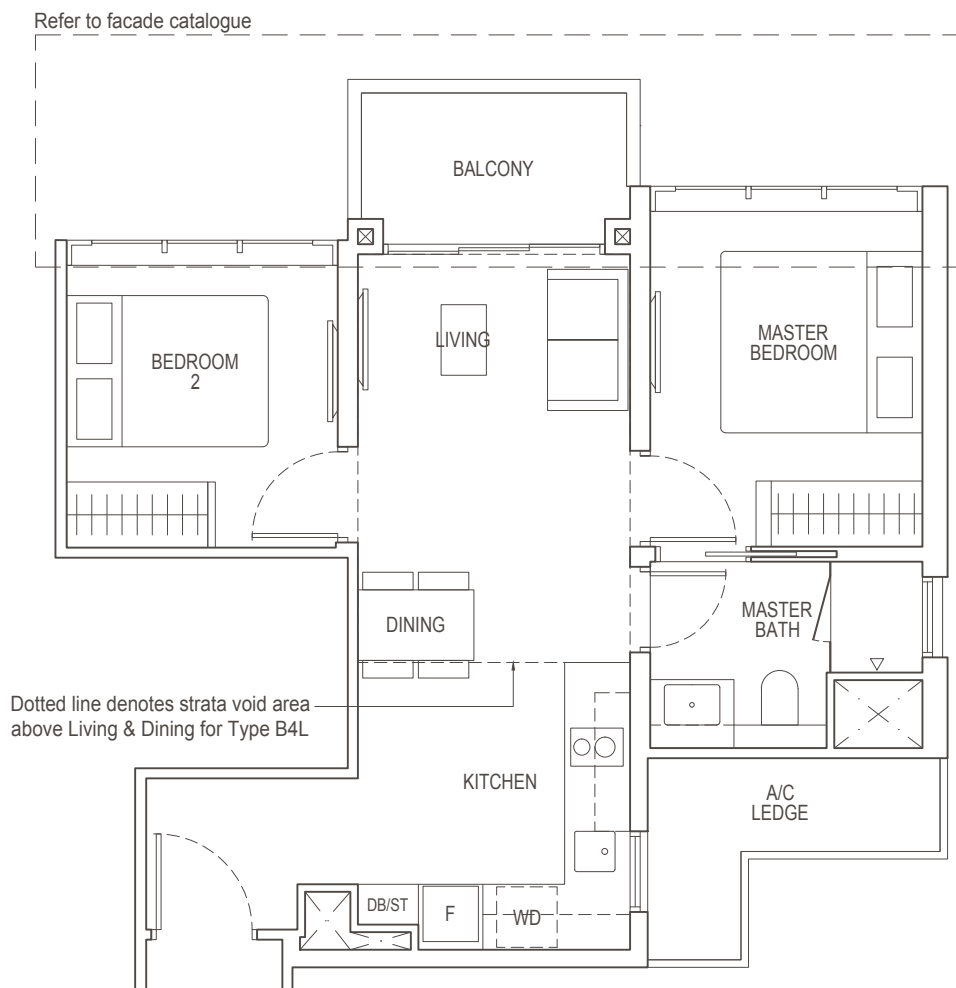
58 sq m / 624 sq ft

Block 2: #03-07 to #23-07, #25-07 to #35-07

Type B4L

71 sq m / 764 sq ft

Inclusive of strata void area of
13 sq m / 140 sq ft above Living & Dining
Block 2: #36-07



Area includes air-con (A/C) ledge, balcony and strata void area where applicable. The plans are subject to change as may be approved by relevant authorities. All floor plans are approximate measurements only and are subject to government re-survey. The balcony shall not be enclosed unless with the approved balcony screen. For an illustration of the approved balcony screen, please refer to the diagram annexed hereto as "Annexure 1".

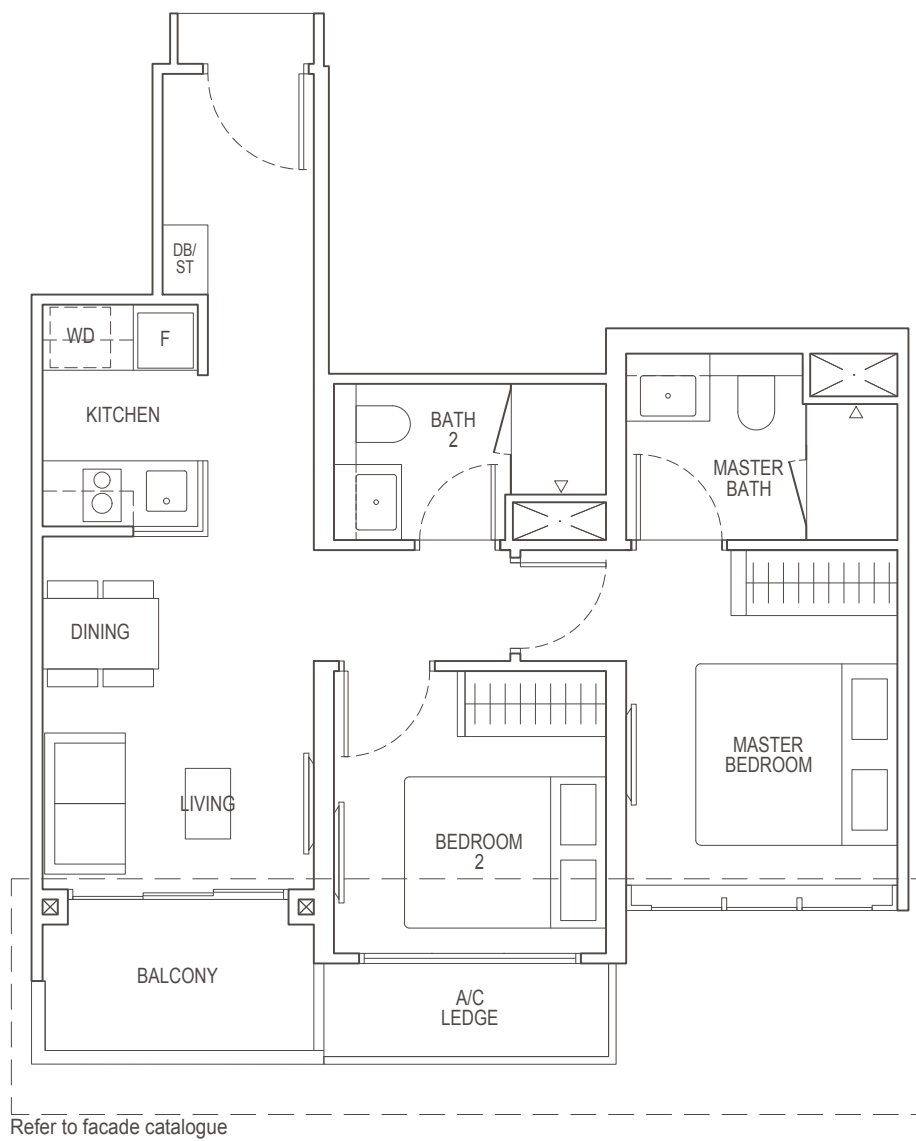
Key plan is not drawn to scale.

2-Bedroom Premium

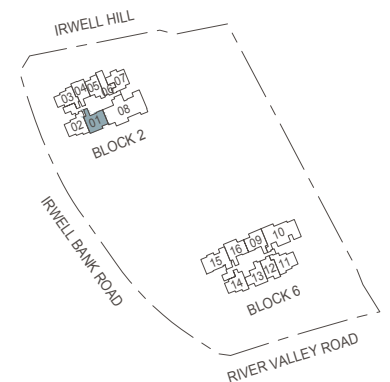
Type B5(b)

61 sq m / 657 sq ft

Block 2: #02-01 to #23-01, #25-01 to #35-01



Area includes air-con (A/C) ledge, balcony and strata void area where applicable. The plans are subject to change as may be approved by relevant authorities. All floor plans are approximate measurements only and are subject to government re-survey. The balcony shall not be enclosed unless with the approved balcony screen. For an illustration of the approved balcony screen, please refer to the diagram annexed hereto as "Annexure 1".



Key plan is not drawn to scale.

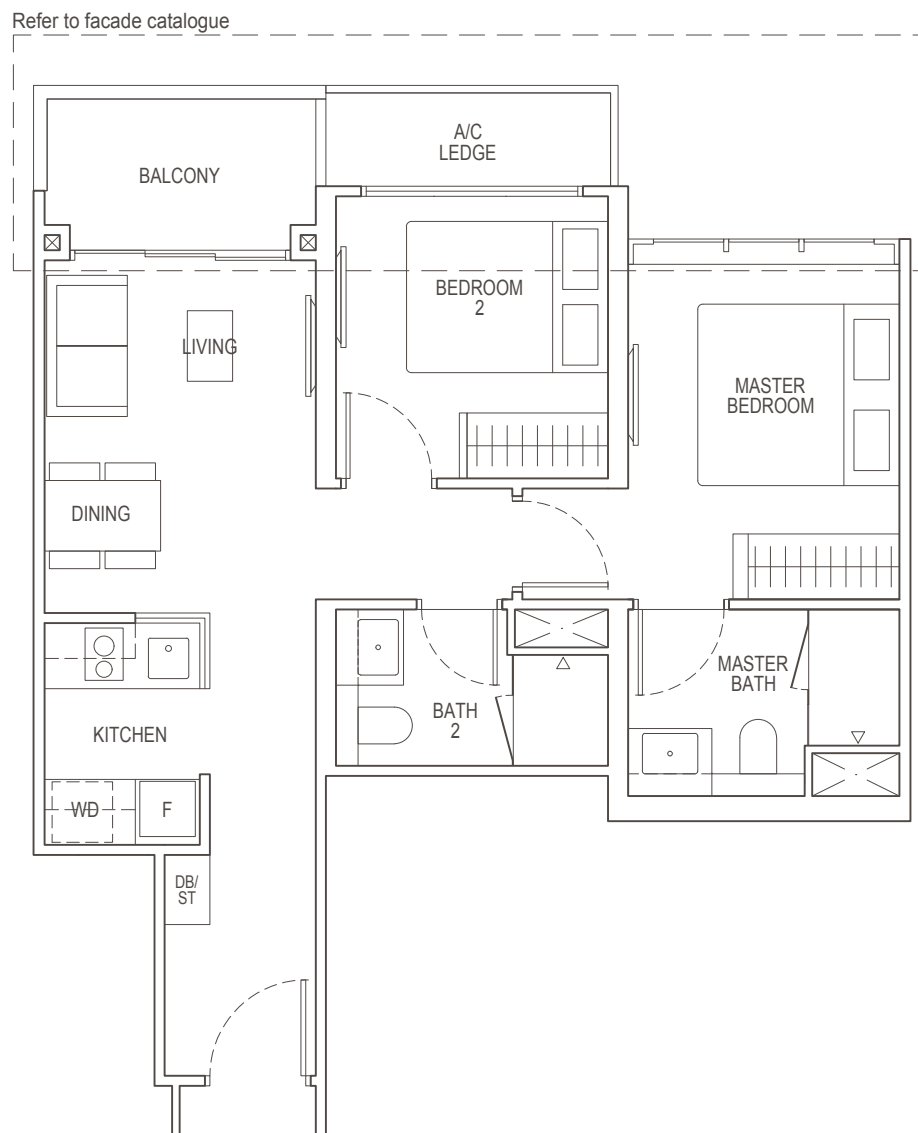


2-Bedroom Premium

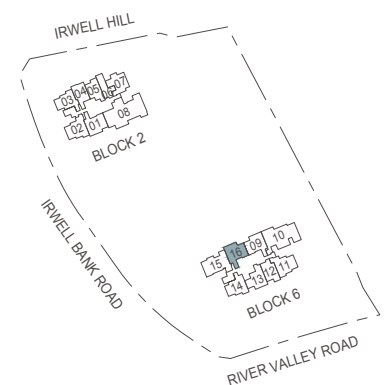
Type B6(b)

61 sq m / 657 sq ft

Block 6: #02-16 to #23-16, #25-16 to #35-16



Area includes air-con (A/C) ledge, balcony and strata void area where applicable. The plans are subject to change as may be approved by relevant authorities. All floor plans are approximate measurements only and are subject to government re-survey. The balcony shall not be enclosed unless with the approved balcony screen. For an illustration of the approved balcony screen, please refer to the diagram annexed hereto as "Annexure 1".



Key plan is not drawn to scale.

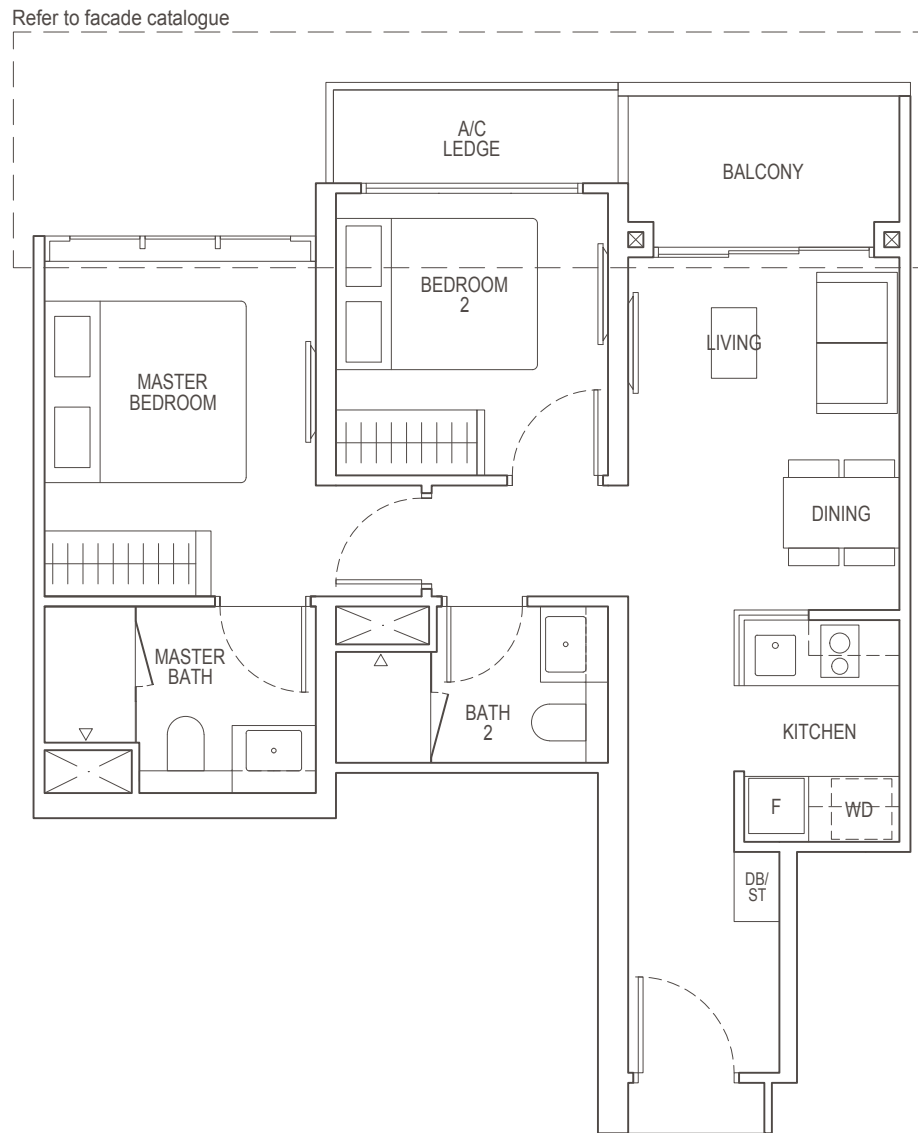


2-Bedroom Premium

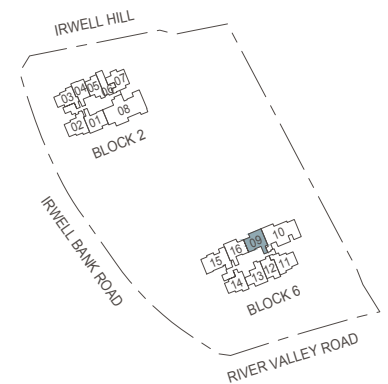
Type B7(b)

62 sq m / 667 sq ft

Block 6: #02-09 to #23-09, #25-09 to #35-09



Area includes air-con (A/C) ledge, balcony and strata void area where applicable. The plans are subject to change as may be approved by relevant authorities. All floor plans are approximate measurements only and are subject to government re-survey. The balcony shall not be enclosed unless with the approved balcony screen. For an illustration of the approved balcony screen, please refer to the diagram annexed hereto as "Annexure 1".



Key plan is not drawn to scale.



2-Bedroom Premium

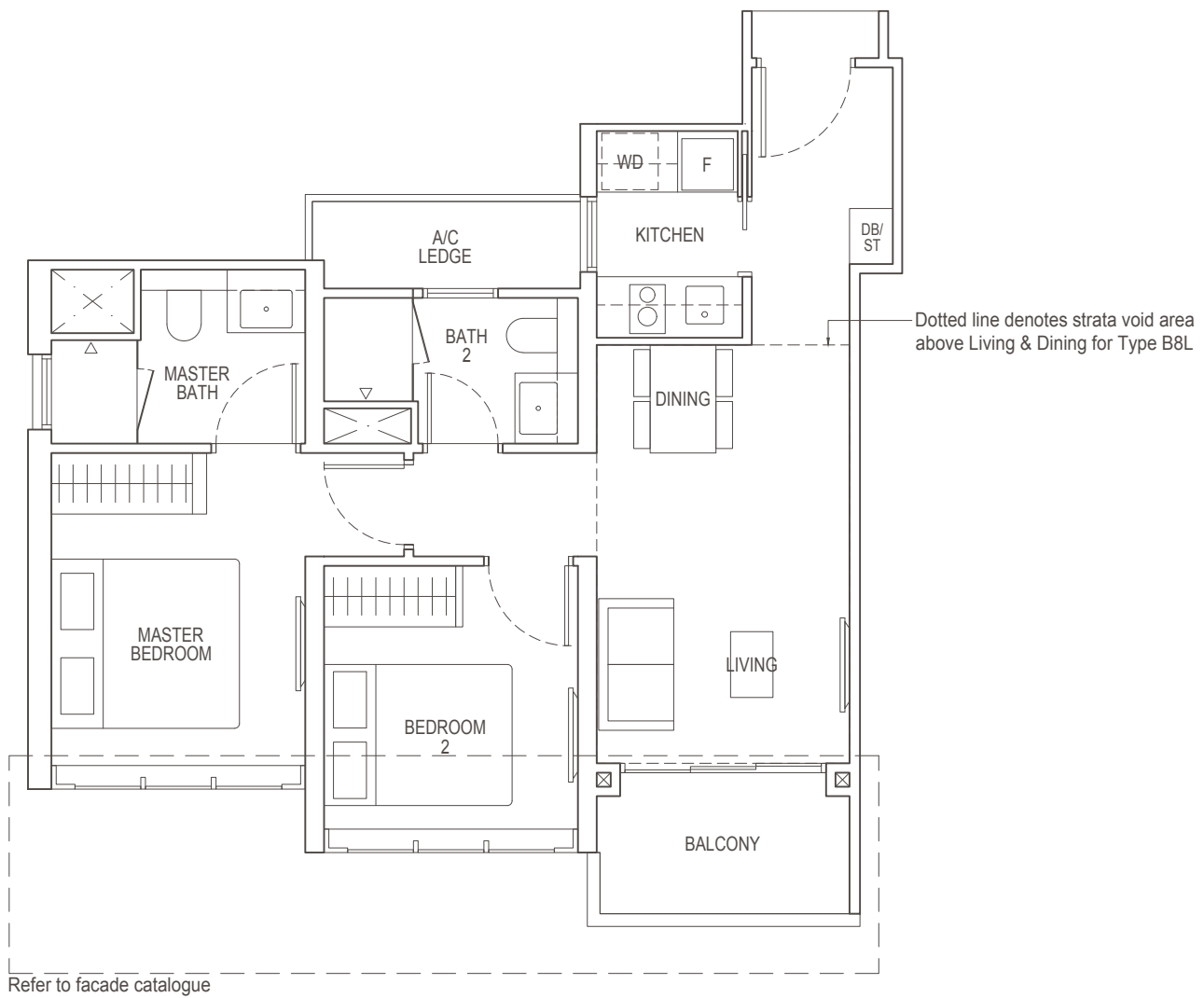
Type B8(b)

62 sq m / 667 sq ft

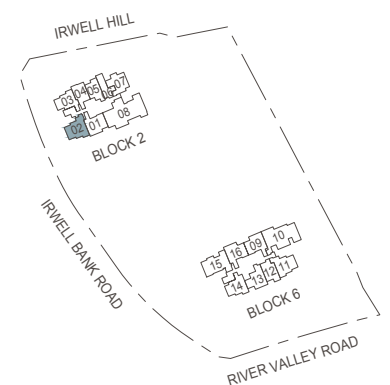
Block 2: #02-02 to #23-02, #25-02 to #35-02

Type B8L

76 sq m / 818 sq ft
 Inclusive of strata void area of
 14 sq m / 151 sq ft above Living & Dining
 Block 2: #36-02



Area includes air-con (A/C) ledge, balcony and strata void area where applicable. The plans are subject to change as may be approved by relevant authorities. All floor plans are approximate measurements only and are subject to government re-survey. The balcony shall not be enclosed unless with the approved balcony screen. For an illustration of the approved balcony screen, please refer to the diagram annexed hereto as "Annexure 1".



Key plan is not drawn to scale.



2-Bedroom Premium

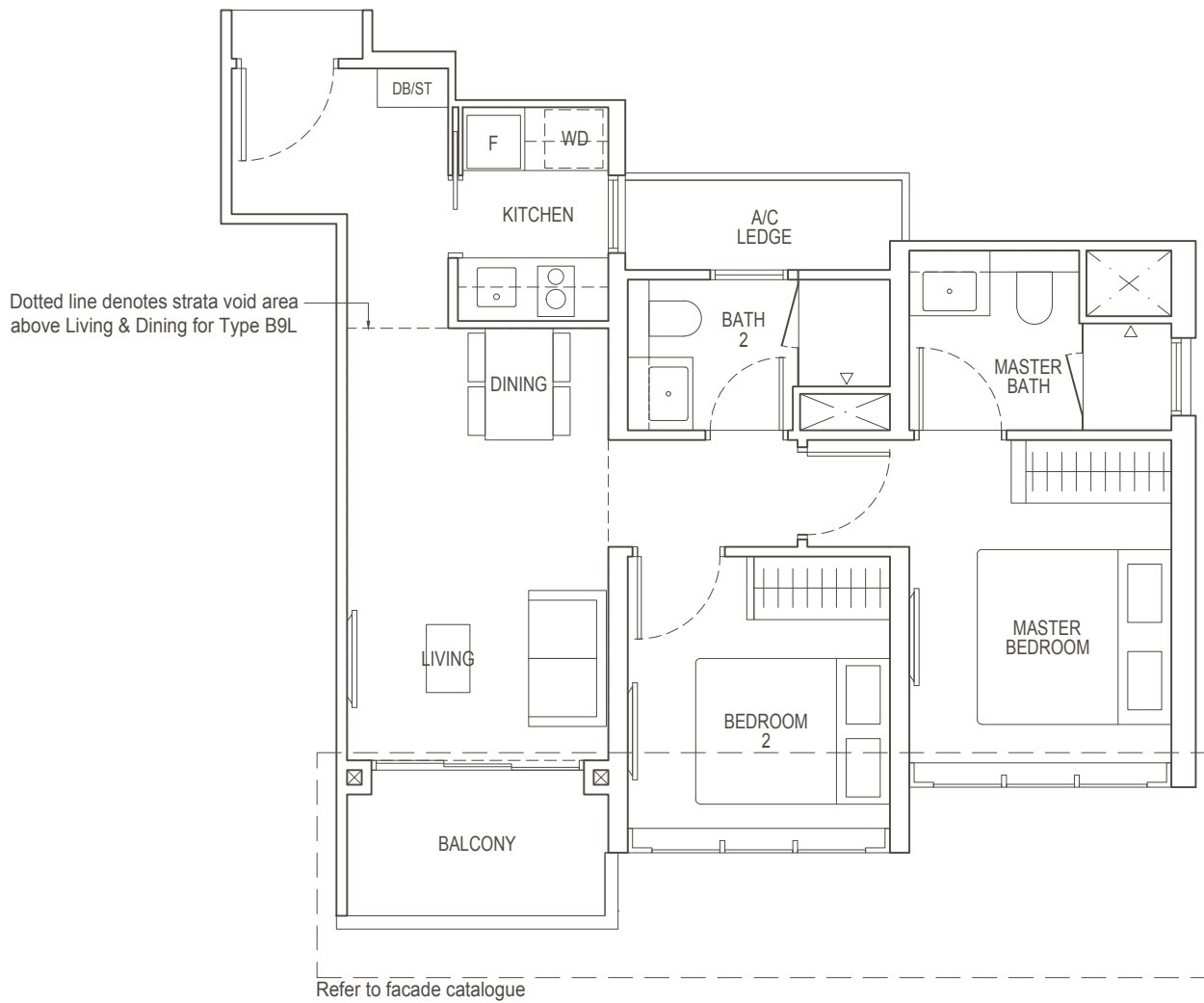
Type B9(b)

63 sq m / 678sq ft

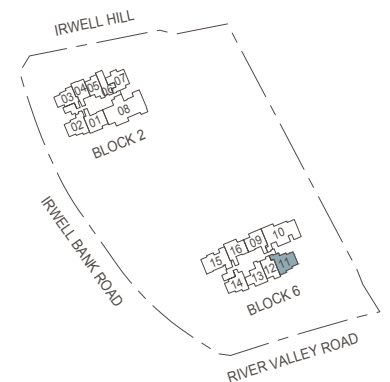
Block 6: #02-11 to #23-11, #25-11 to #35-11

Type B9L

77 sq m / 829 sq ft
 Inclusive of strata void area of
 14 sq m / 151 sq ft above Living & Dining
 Block 6: #36-11



Area includes air-con (A/C) ledge, balcony and strata void area where applicable. The plans are subject to change as may be approved by relevant authorities. All floor plans are approximate measurements only and are subject to government re-survey. The balcony shall not be enclosed unless with the approved balcony screen. For an illustration of the approved balcony screen, please refer to the diagram annexed hereto as "Annexure 1".



Key plan is not drawn to scale.



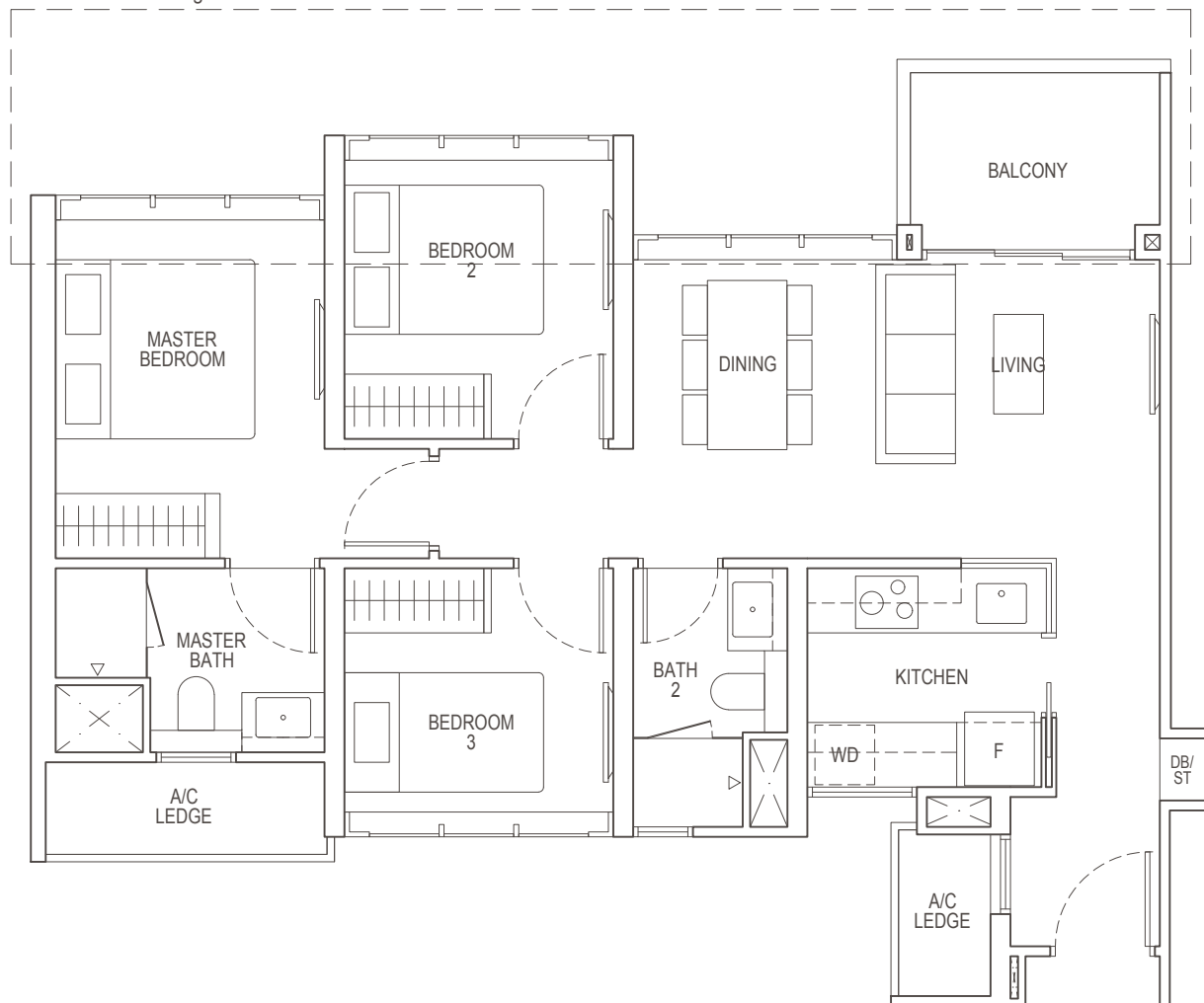
3-Bedroom Classic

Type C1(b)

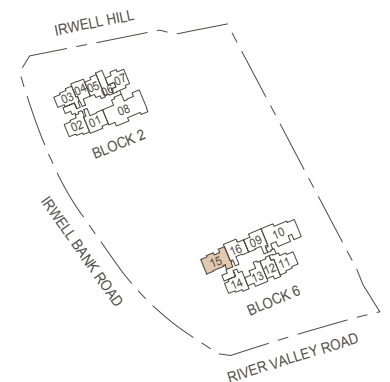
80 sq m / 861 sq ft

Block 6: #02-15 to #23-15, #25-15 to #35-15

Refer to facade catalogue



Area includes air-con (A/C) ledge, balcony and strata void area where applicable. The plans are subject to change as may be approved by relevant authorities. All floor plans are approximate measurements only and are subject to government re-survey. The balcony shall not be enclosed unless with the approved balcony screen. For an illustration of the approved balcony screen, please refer to the diagram annexed hereto as "Annexure 1".



Key plan is not drawn to scale.

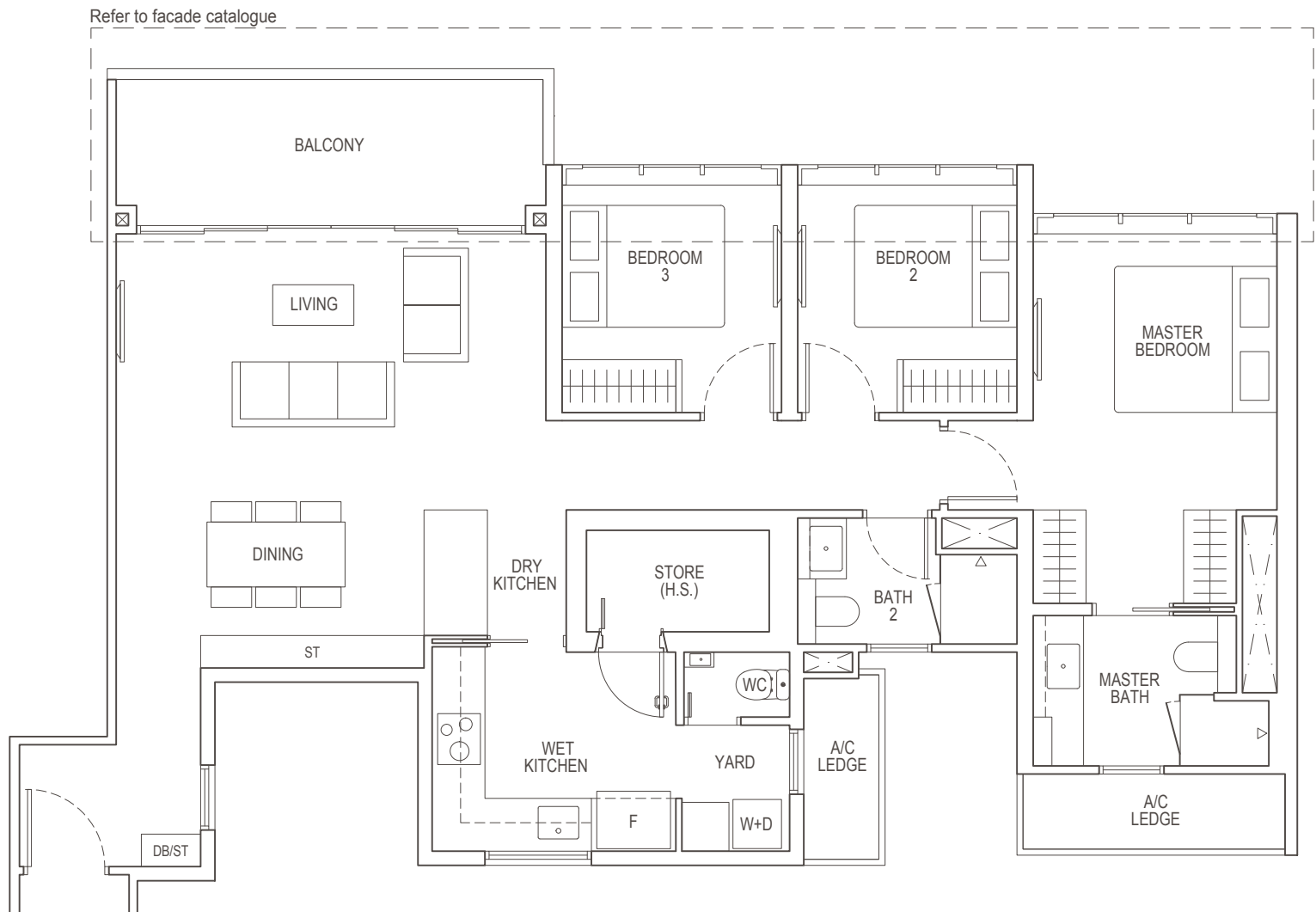


3-Bedroom Premium

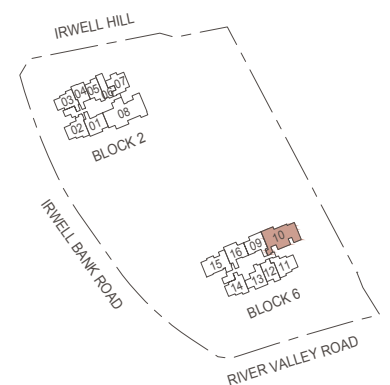
Type C2(b)

118 sq m / 1270 sq ft

Block 6: #02-10 to #23-10, #25-10 to #35-10



Area includes air-con (A/C) ledge, balcony and strata void area where applicable. The plans are subject to change as may be approved by relevant authorities. All floor plans are approximate measurements only and are subject to government re-survey. The balcony shall not be enclosed unless with the approved balcony screen. For an illustration of the approved balcony screen, please refer to the diagram annexed hereto as "Annexure 1".



Key plan is not drawn to scale.

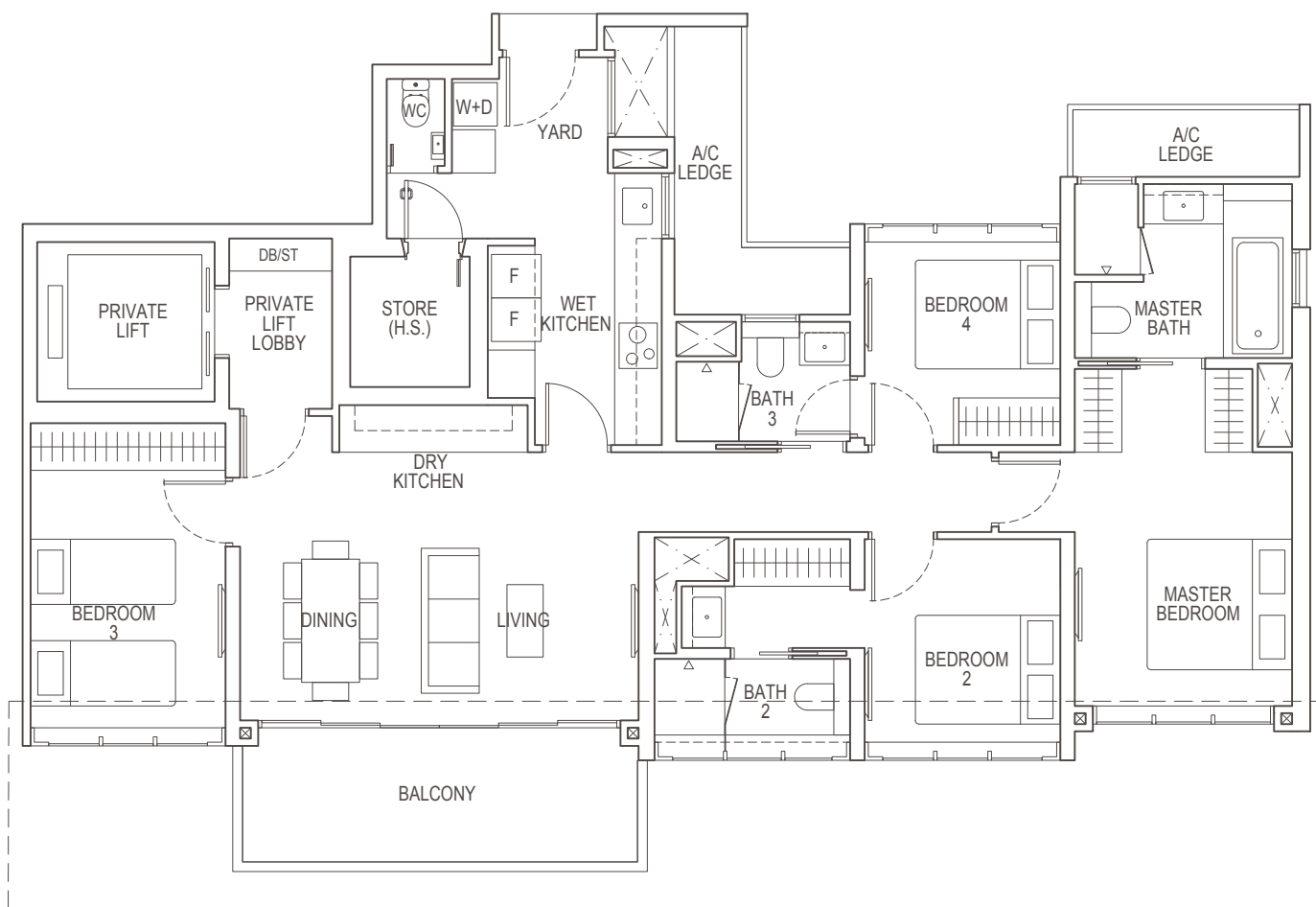


4-Bedroom Premium

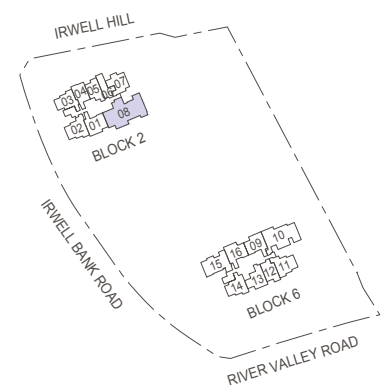
Type D1(b)

143 sq m / 1539 sq ft

Block 2: #05-08 to #07-08, #09-08, #17-08, #18-08
#23-08, #30-08, #32-08 to #35-08



Refer to facade catalogue



Key plan is not drawn to scale.



Area includes air-con (A/C) ledge, balcony and strata void area where applicable. The plans are subject to change as may be approved by relevant authorities. All floor plans are approximate measurements only and are subject to government re-survey. The balcony shall not be enclosed unless with the approved balcony screen. For an illustration of the approved balcony screen, please refer to the diagram annexed hereto as "Annexure 1".

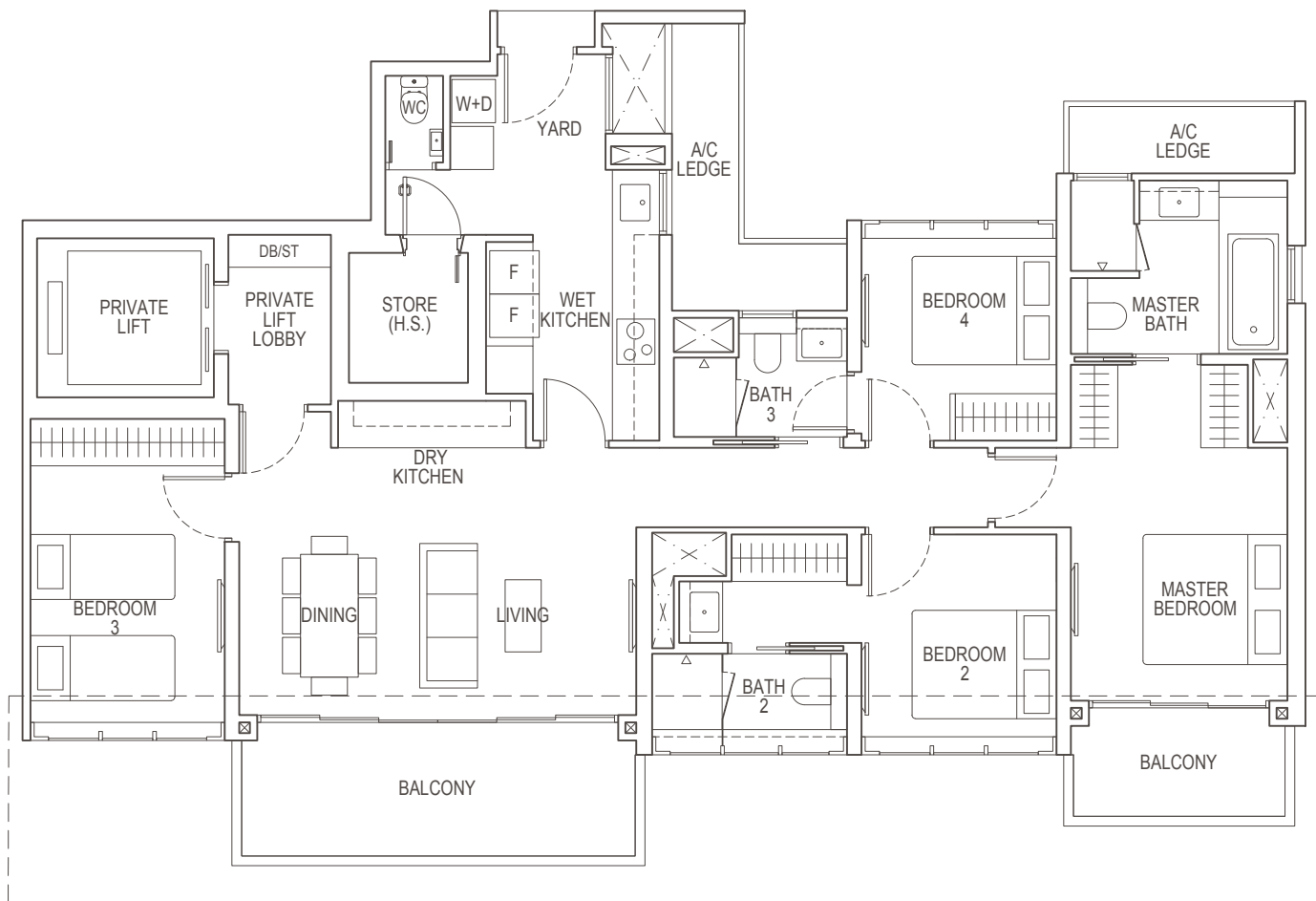


4-Bedroom Premium

Type D2(b)

147 sq m / 1582 sq ft

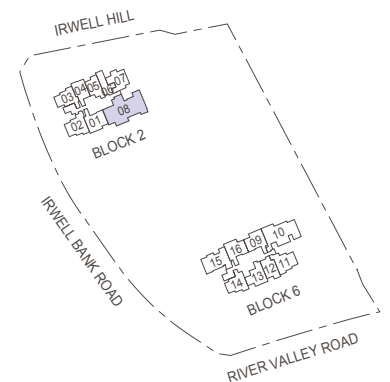
Block 2: #02-08 to #04-08, #08-08, #10-08 to #16-08
#19-08 to #22-08, #25-08 to #29-08, #31-08



Refer to facade catalogue



Area includes air-con (A/C) ledge, balcony and strata void area where applicable. The plans are subject to change as may be approved by relevant authorities. All floor plans are approximate measurements only and are subject to government re-survey. The balcony shall not be enclosed unless with the approved balcony screen. For an illustration of the approved balcony screen, please refer to the diagram annexed hereto as "Annexure 1".



Key plan is not drawn to scale.

