

# 3 BEDROOM DELUXE

## Type C1a1(pd)

88 sqm (947 sqft)

### Block 32A

#01-10

### Block 36A

#01-64

### Block 36B

#01-70

### Block 38B

#01-88

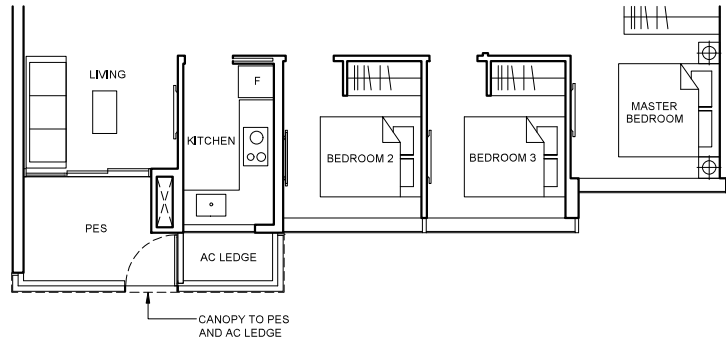
### MIRRORED

### Block 38A

#01-84\*

### Block 40

#01-96\*



## Type C1a1

88 sqm (947 sqft)

### Block 32A

#02-10 To #04-10

### Block 36A

#02-64 To #04-64

### Block 36B

#02-70 To #04-70

### Block 38B

#02-88 To #04-88

### MIRRORED

### Block 32

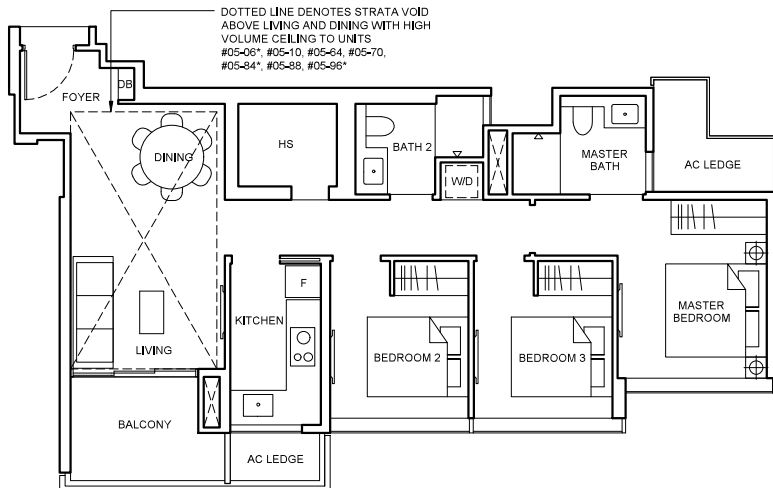
#02-06\* To #04-06\*

### Block 38A

#02-84\* To #04-84\*

### Block 40

#02-96\* To #04-96\*



## Type C1a1(PH)

104 sqm (1119 sqft)

Strata void area of 16 sqm / 172 sqft above living and dining with high volume ceiling of 4590mm H.

Balcony at top floor is provided with canopy.

### Block 32A

#05-10

### Block 36A

#05-64

### Block 36B

#05-70

### Block 38B

#05-88

### MIRRORED

### Block 32

#05-06\*

### Block 38A

#05-84\*

### Block 40

#05-96\*

## LEGEND

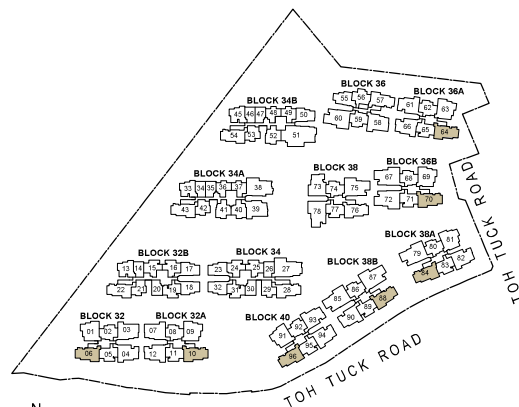
[W/D] WASHER CUM DRYER

[F] FRIDGE

## Note

- Area includes AC ledge, balcony and private enclosed space (PES), strata void (where applicable).
- The above plans and illustrations are subject to change as maybe required or approved by the relevant authorities.
- All floor areas are approximate only and subject to final survey.
- Please refer to the key plan for orientation.
- High volume space in (pd) unit does not constitute strata area.
- Service voids are excluded from strata area.
- RC ledge and / or RC trellis are excluded from strata area.

0 1 2 3 5M



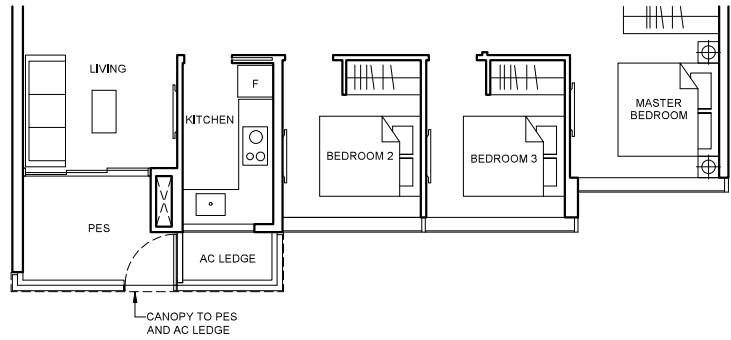
# 3 BEDROOM DELUXE

## Type C1a2(pd)

88 sqm (947 sqft)

**Block 38**  
#01-76

**MIRRORED**  
**Block 36**  
#01-57\*



## Type C1a2

88 sqm (947 sqft)

**Block 38**  
#02-76 To #04-76

**MIRRORED**  
**Block 36**  
#02-57\* To #04-57\*

## Type C1a2(PH)

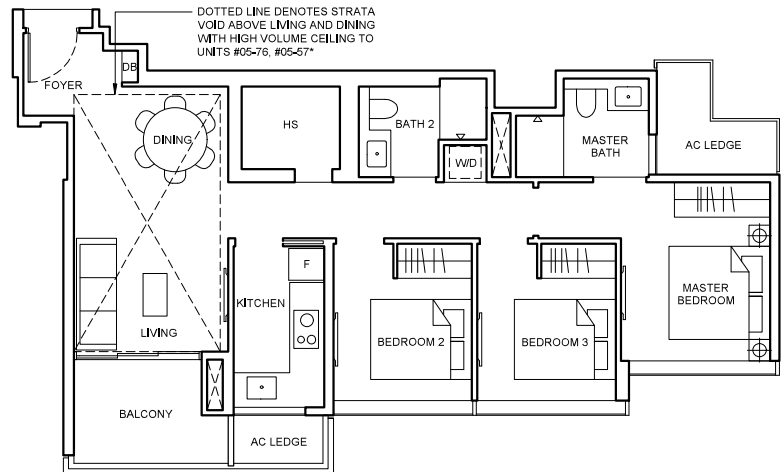
104 sqm (1119 sqft)

Strata void area of 16 sqm / 172 sqft above living and dining with high volume ceiling of 4590mm H.

Balcony at top floor is provided with canopy.

**Block 38**  
#05-76

**MIRRORED**  
**Block 36**  
#05-57\*



## LEGEND

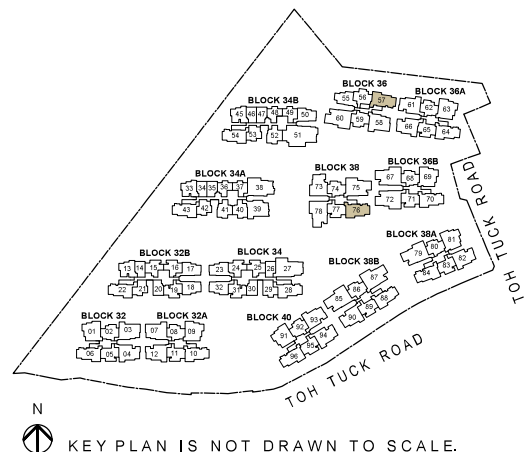
[W/D] WASHER CUM DRYER

[F] FRIDGE

## Note

- Area includes AC ledge, balcony and private enclosed space (PES), strata void (where applicable).
- The above plans and illustrations are subject to change as maybe required or approved by the relevant authorities.
- All floor areas are approximate only and subject to final survey.
- Please refer to the key plan for orientation.
- High volume space in (pd) unit does not constitute strata area.
- Service voids are excluded from strata area.
- RC ledge and / or RC trellis are excluded from strata area.

0 1 2 3 5M



KEY PLAN IS NOT DRAWN TO SCALE.

# 3 BEDROOM DELUXE

## Type C1b(pd)

91 sqm (980 sqft)

### Block 36A

#01-61

### Block 38A

#01-82

### Block 40

#01-94

### MIRRORED

### Block 32A

#01-12\*

### Block 36A

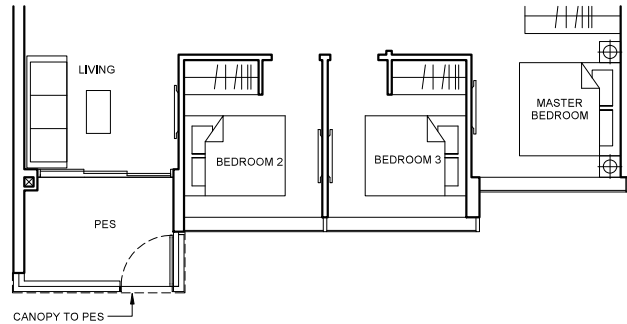
#01-66\*

### Block 38B

#01-90\*

### Block 40

#01-93\*



## Type C1b

91 sqm (980 sqft)

### Block 32

#02-04 To #04-04

### Block 36A

#02-61 To #04-61

### Block 38A

#02-82 To #04-82

### Block 40

#02-94 To #04-94

### MIRRORED

### Block 32A

#02-12\* To #04-12\*

### Block 36A

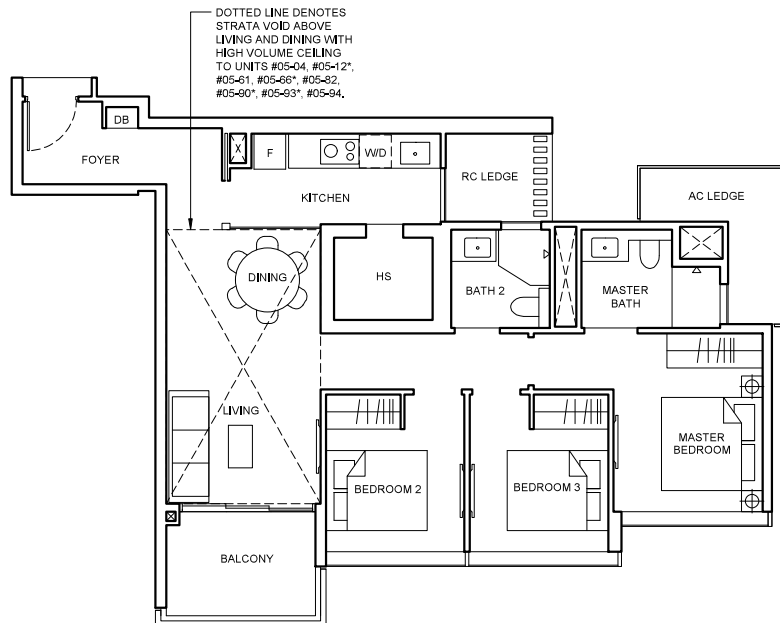
#02-66\* To #04-66\*

### Block 38B

#02-90\* To #04-90\*

### Block 40

#02-93\* To #04-93\*



## Type C1b(PH)

108 sqm (1163 sqft)

Strata void area of 17 sqm / 183 sqft above living and dining with high volume ceiling of 4590mm H.

Balcony at top floor is provided with canopy.

### Block 32

#05-04

### Block 36A

#05-61

### Block 38A

#05-82

### Block 40

#05-94

### MIRRORED

### Block 32A

#05-12\*

### Block 36A

#05-66\*

### Block 38B

#05-90\*

### Block 40

#05-93\*

## LEGEND

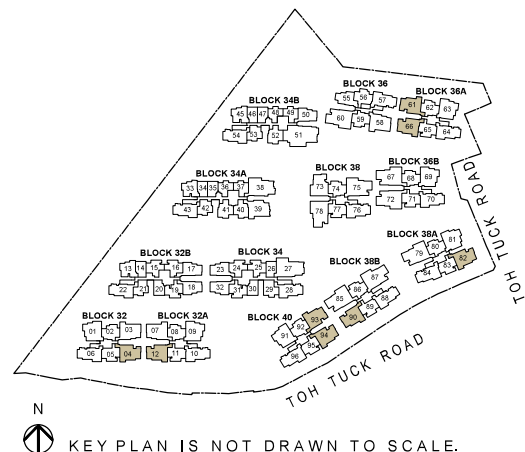
[W/D] WASHER CUM DRYER

[F] FRIDGE

## Note

- Area includes AC ledge, balcony and private enclosed space (PES), strata void (where applicable).
- The above plans and illustrations are subject to change as maybe required or approved by the relevant authorities.
- All floor areas are approximate only and subject to final survey.
- Please refer to the key plan for orientation.
- High volume space in (pd) unit does not constitute strata area.
- Service voids are excluded from strata area.
- RC ledge and / or RC trellis are excluded from strata area.

0 1 2 3 5M



# 3 BEDROOM DELUXE

## Type C1c(p)

90 sqm (969 sqft)

**Block 34A**

#01-43

**Block 34B**

#01-54



## Type C1c

90 sqm (969 sqft)

**Block 34A**

#02-43 To #08-43

**Block 34B**

#02-54 To #08-54

## Type C1c(PH)

106 sqm (1141 sqft)

Strata void area of 16 sqm / 172 sqft above living and dining with high volume ceiling of 4415mm H.

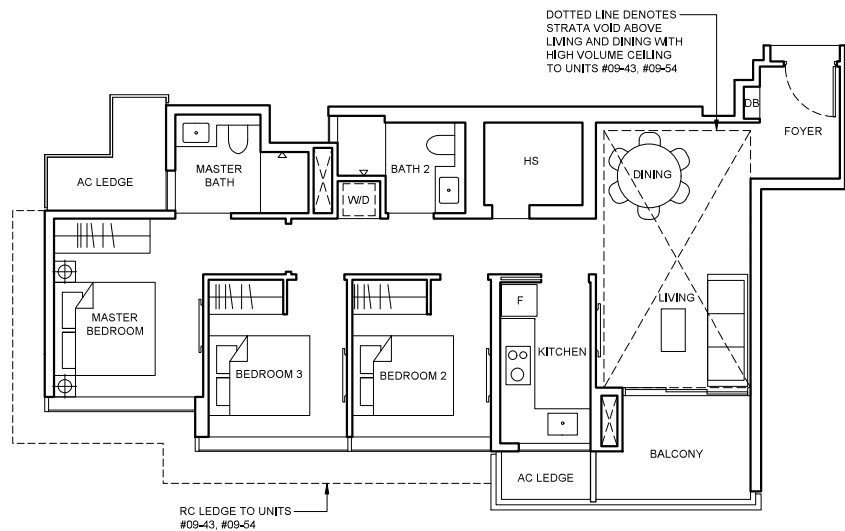
Balcony at top floor is provided with canopy.

**Block 34A**

#09-43

**Block 34B**

#09-54



## LEGEND

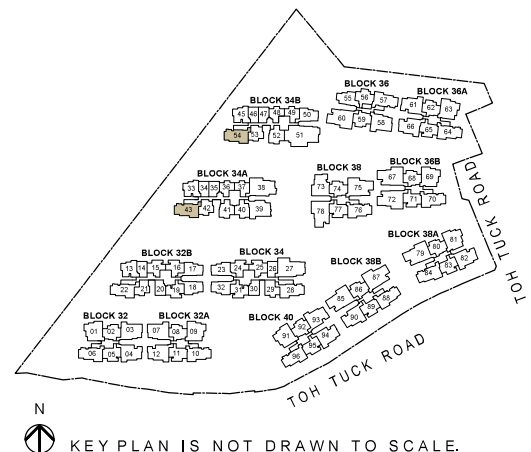
[W/D] WASHER CUM DRYER

[F] FRIDGE

## Note

- Area includes AC ledge, balcony and private enclosed space (PES), strata void (where applicable).
- The above plans and illustrations are subject to change as maybe required or approved by the relevant authorities.
- All floor areas are approximate only and subject to final survey.
- Please refer to the key plan for orientation.
- High volume space in (pd) unit does not constitute strata area.
- Service voids are excluded from strata area.
- RC ledge and / or RC trellis are excluded from strata area.

0 1 2 3 5M



# 3 BEDROOM DELUXE

## Type C1d(p)

91 sqm (980 sqft)

### Block 32B

#01-22

### MIRRORED

### Block 34

#01-28\*



## Type C1d

91 sqm (980 sqft)

### Block 32B

#02-22 To #08-22

### MIRRORED

### Block 34

#02-28\* To #09-28\*

## Type C1d(PH)

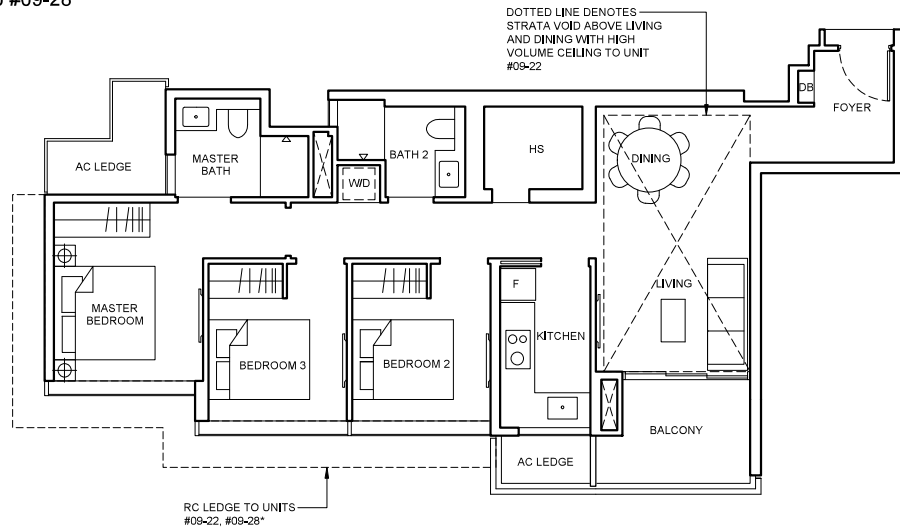
107 sqm (1152 sqft)

Strata void area of 16 sqm / 172 sqft above living and dining with high volume ceiling of 4415mm H.

Balcony at top floor is provided with canopy.

### Block 32B

#09-22



## LEGEND

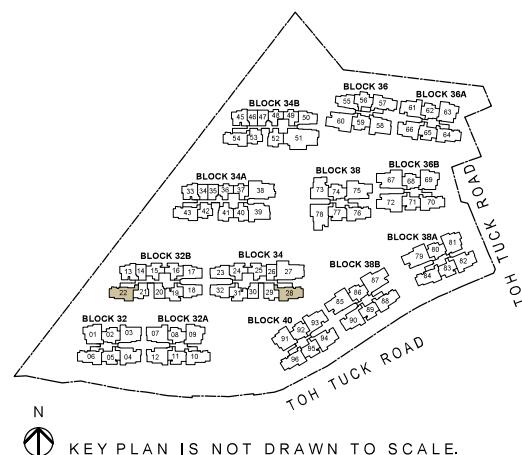
[W/D] WASHER CUM DRYER

[F] FRIDGE

## Note

- Area includes AC ledge, balcony and private enclosed space (PES), strata void (where applicable).
- The above plans and illustrations are subject to change as maybe required or approved by the relevant authorities.
- All floor areas are approximate only and subject to final survey.
- Please refer to the key plan for orientation.
- High volume space in (pd) unit does not constitute strata area.
- Service voids are excluded from strata area.
- RC ledge and / or RC trellis are excluded from strata area.

0 1 2 3 5M



# 3 BEDROOM DUAL KEY

## Type C2(DK)(pd)

96 sqm (1033 sqft)

### Block 36A

#01-63

### Block 36B

#01-69

### Block 38A

#01-81

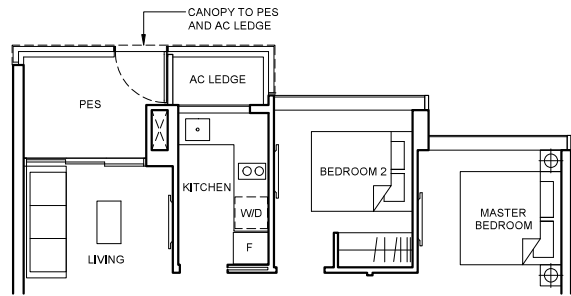
### MIRRORED

### Block 32

#01-01\*

### Block 40

#01-91\*



## Type C2(DK)

96 sqm (1033 sqft)

### Block 32A

#02-09 To #04-09

### Block 36A

#02-63 To #04-63

### Block 36B

#02-69 To #04-69

### Block 38A

#02-81 To #04-81

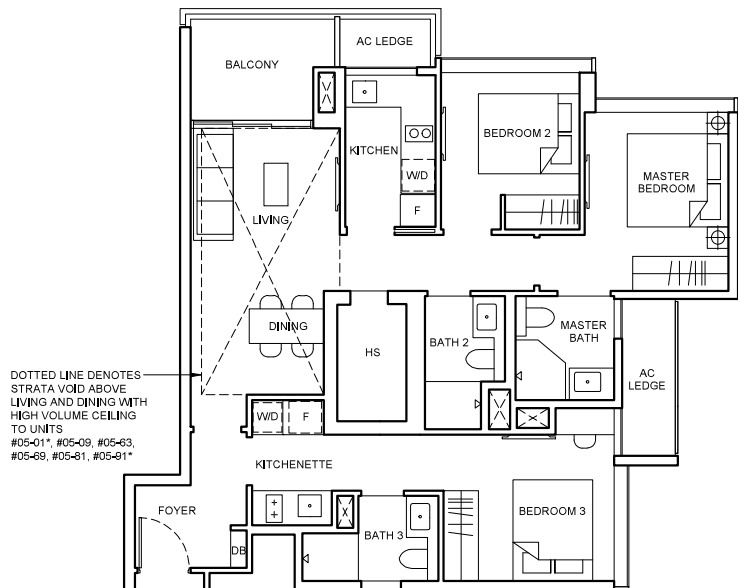
### MIRRORED

### Block 32

#02-01\* To #04-01\*

### Block 40

#02-91\* To #04-91\*



## Type C2(DK)(PH)

111 sqm (1195 sqft)

Strata void area of 15 sqm / 162 sqft above living and dining with high volume ceiling of 4590mm H.

Balcony at top floor is provided with canopy.

### Block 32A

#05-09

### Block 36A

#05-63

### Block 36B

#05-69

### Block 38A

#05-81

### MIRRORED

### Block 32

#05-01\*

### Block 40

#05-91\*

## LEGEND

[W/D] WASHER CUM DRYER

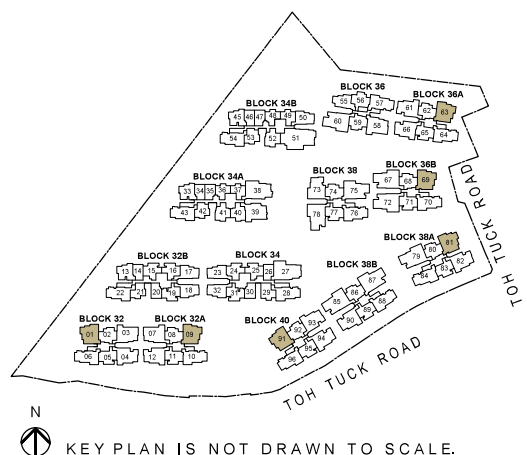
[F] INTEGRATED FRIDGE

[F] FRIDGE

## Note

- Area includes AC ledge, balcony and private enclosed space (PES), strata void (where applicable).
- The above plans and illustrations are subject to change as maybe required or approved by the relevant authorities.
- All floor areas are approximate only and subject to final survey.
- Please refer to the key plan for orientation.
- High volume space in (pd) unit does not constitute strata area.
- Service voids are excluded from strata area.
- RC ledge and / or RC trellis are excluded from strata area.

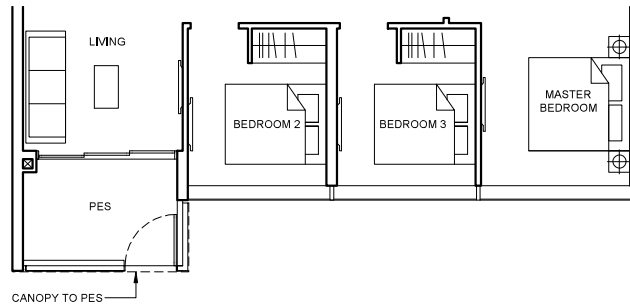
0 1 2 3 5M



# 3 BEDROOM PREMIUM

## Type C3a(pd) 98 sqm (1055 sqft)

**Block 36**  
#01-58



## Type C3a 98 sqm (1055 sqft)

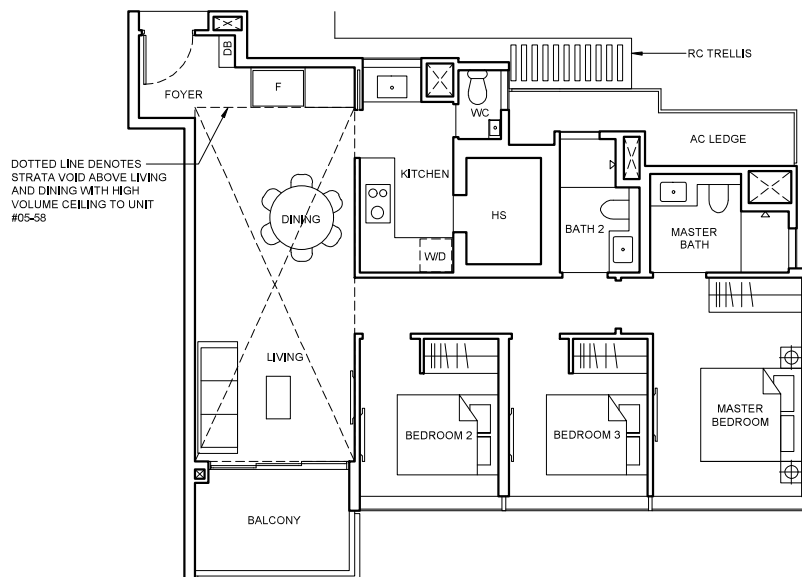
**Block 36**  
#02-58 To #04-58

## Type C3a(PH) 121 sqm (1302 sqft)

Strata void area of 23 sqm / 247 sqft above living and dining with high volume ceiling of 4590mm H.

Balcony at top floor is provided with canopy.

**Block 36**  
#05-58



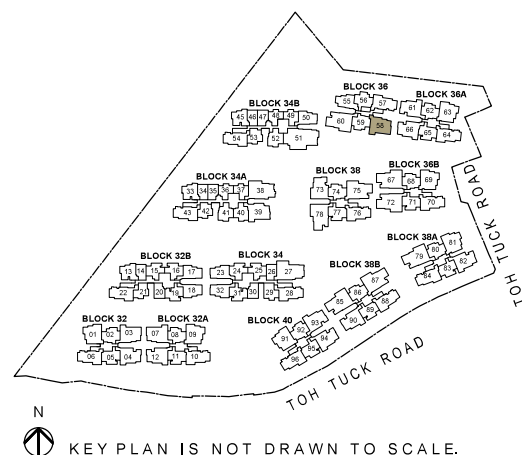
## LEGEND

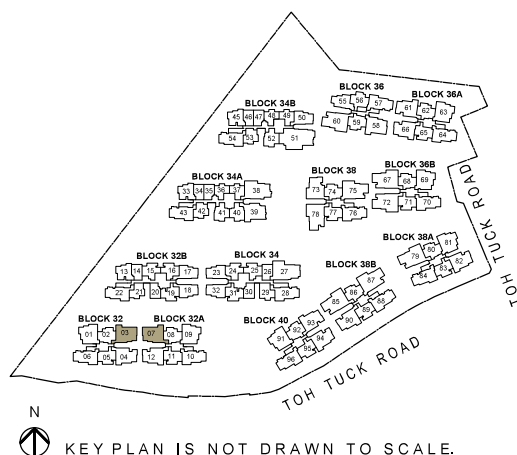
[W/D] WASHER CUM DRYER [F] FRIDGE

## Note

- Area includes AC ledge, balcony and private enclosed space (PES), strata void (where applicable).
- The above plans and illustrations are subject to change as maybe required or approved by the relevant authorities.
- All floor areas are approximate only and subject to final survey.
- Please refer to the key plan for orientation.
- High volume space in (pd) unit does not constitute strata area.
- Service voids are excluded from strata area.
- RC ledge and / or RC trellis are excluded from strata area.

0 1 2 3 5M



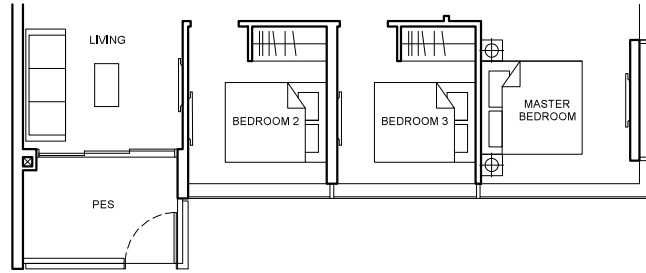




# 3 BEDROOM PREMIUM

## Type C3c(p) 101 sqm (1087 sqft)

**Block 34A**  
#01-39



## Type C3c 101 sqm (1087 sqft)

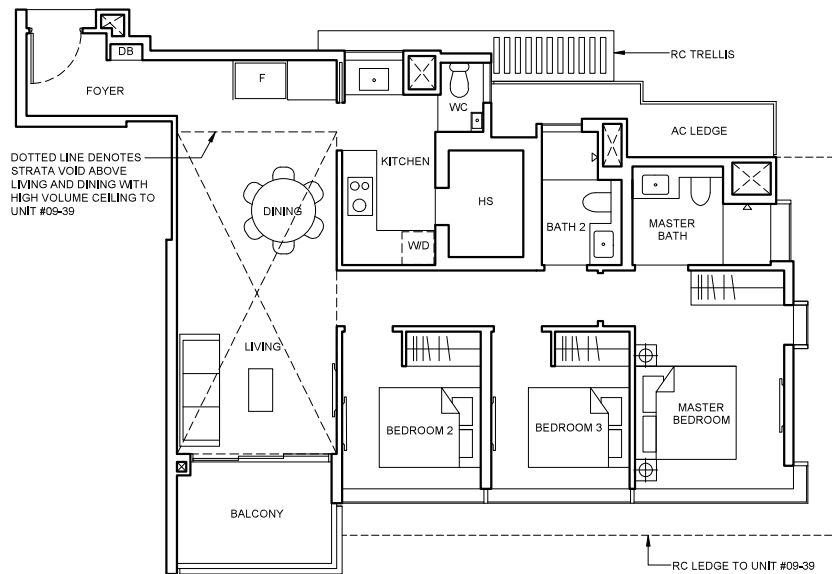
**Block 34A**  
#02-39 To #08-39

## Type C3c(PH) 122 sqm (1313 sqft)

Strata void area of 21 sqm / 226 sqft above living and dining with high volume ceiling of 4415mm H.

Balcony at top floor is provided with canopy.

**Block 34A**  
#09-39



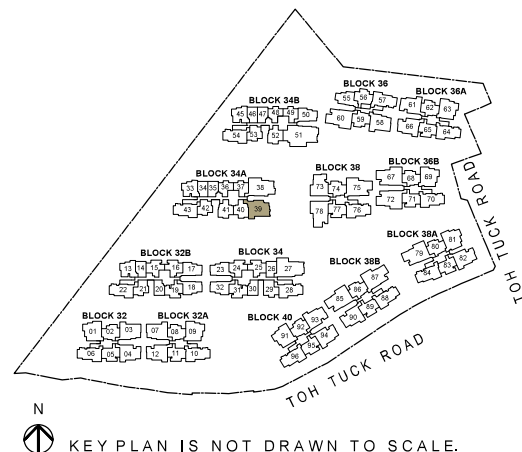
### LEGEND

[W/D] WASHER CUM DRYER [F] FRIDGE

### Note

- Area includes AC ledge, balcony and private enclosed space (PES), strata void (where applicable).
- The above plans and illustrations are subject to change as maybe required or approved by the relevant authorities.
- All floor areas are approximate only and subject to final survey.
- Please refer to the key plan for orientation.
- High volume space in (pd) unit does not constitute strata area.
- Service voids are excluded from strata area.
- RC ledge and / or RC trellis are excluded from strata area.

0 1 2 3 5M

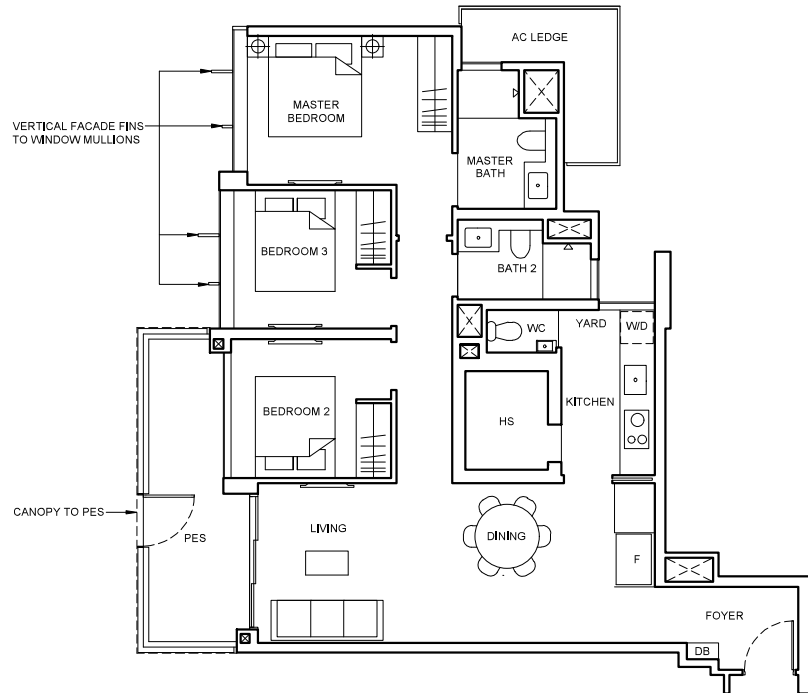


KEY PLAN IS NOT DRAWN TO SCALE.

# 3 BEDROOM PREMIUM

**Type C4(pd)**  
103 sqm (1109 sqft)

**Block 38**  
#01-73



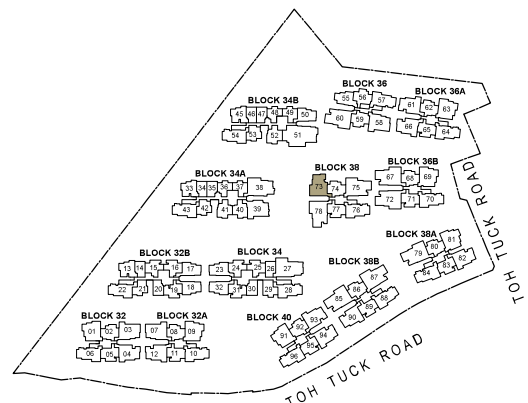
## LEGEND

[W/D] WASHER CUM DRYER [F] FRIDGE

## Note

- Area includes AC ledge, balcony and private enclosed space (PES), strata void (where applicable).
- The above plans and illustrations are subject to change as maybe required or approved by the relevant authorities.
- All floor areas are approximate only and subject to final survey.
- Please refer to the key plan for orientation.
- High volume space in (pd) unit does not constitute strata area.
- Service voids are excluded from strata area.
- RC ledge and / or RC trellis are excluded from strata area.

0 1 2 3 5M



KEY PLAN IS NOT DRAWN TO SCALE.

# 3 BEDROOM PREMIUM

## Type C4

103 sqm (1109 sqft)

### Block 38

#02-73 To #04-73

## Type C4(PH)

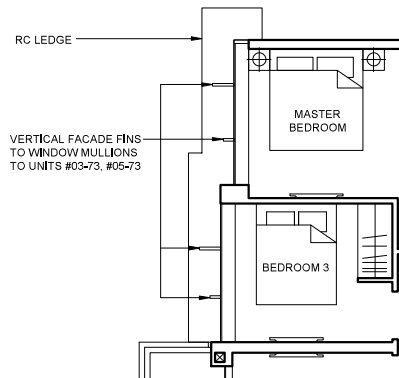
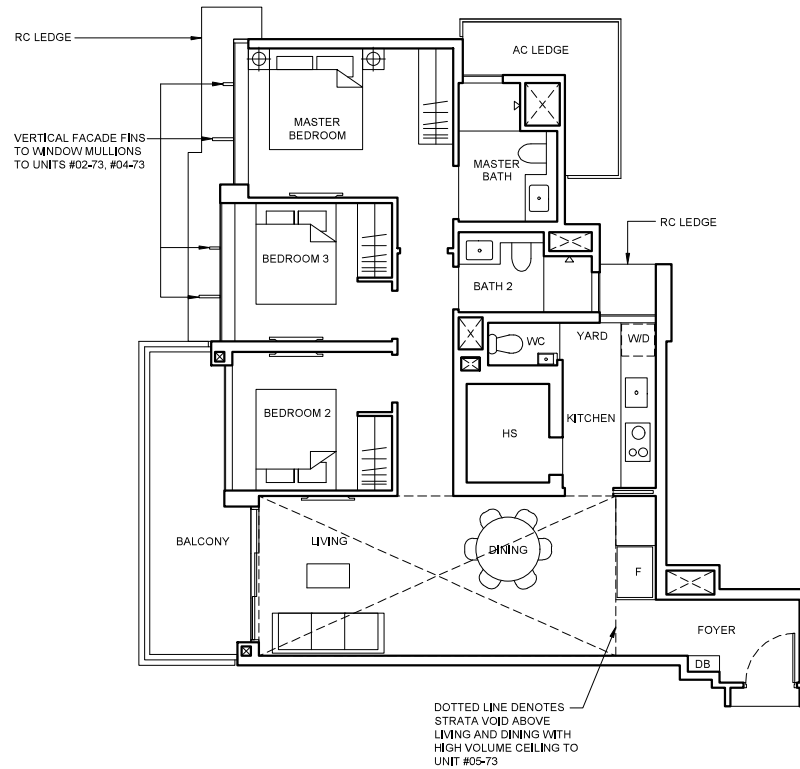
126 sqm (1356 sqft)

Strata void area of 23 sqm / 247 sqft above living and dining with high volume ceiling of 4590mm H.

Balcony at top floor is provided with canopy.

### Block 38

#05-73



Applicable to units #03-73, #05-73

## LEGEND

[WID] WASHER CUM DRYER [F] FRIDGE

## Note

- Area includes AC ledge, balcony and private enclosed space (PES), strata void (where applicable).
- The above plans and illustrations are subject to change as maybe required or approved by the relevant authorities.
- All floor areas are approximate only and subject to final survey.
- Please refer to the key plan for orientation.
- High volume space in (pd) unit does not constitute strata area.
- Service voids are excluded from strata area.
- RC ledge and / or RC trellis are excluded from strata area.

0 1 2 3 5M

