

# 1 BEDROOM + STUDY

## Type AS1a(p)

44 sqm (474 sqft)

### Block 32B

#01-14

#01-20

### Block 34A

#01-34

### Block 34B

#01-46

### MIRRORED

### Block 34

#01-26\*

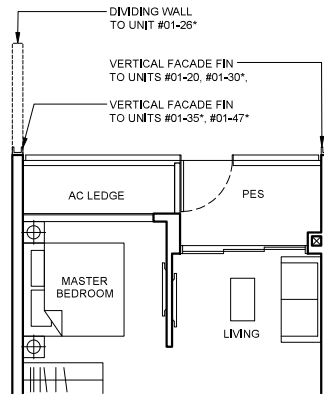
#01-30\*

### Block 34A

#01-35\*

### Block 34B

#01-47\*



## Type AS1a

44 sqm (474 sqft)

### Block 32B

#02-14 To #08-14

#02-20 To #09-20

### Block 34A

#02-34 To #08-34

### Block 34B

#02-46 To #08-46

### MIRRORED

### Block 34

#02-26\* To #09-26\*

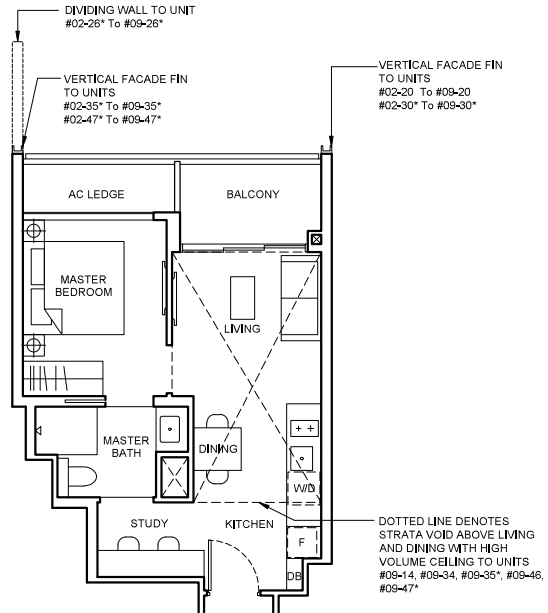
#02-30\* To #09-30\*

### Block 34A

#02-35\* To #08-35\*

### Block 34B

#02-47\* To #08-47\*



## Type AS1a(PH)

58 sqm (624 sqft)

Strata void area of 14 sqm / 150 sqft above living and dining with high volume ceiling of 4415mm H.

Balcony at top floor is provided with canopy.

### Block 32B

#09-14

### Block 34A

#09-34

### Block 34B

#09-46

### MIRRORED

### Block 34A

#09-35\*

### Block 34B

#09-47\*

## LEGEND

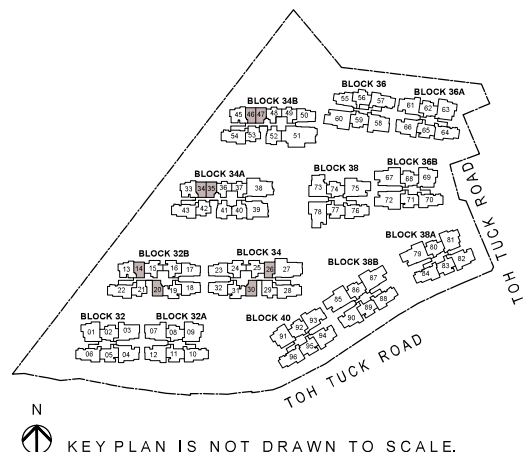
[W/D] WASHER CUM DRYER

[F] INTEGRATED FRIDGE

## Note

- Area includes AC ledge, balcony and private enclosed space (PES), strata void (where applicable).
- The above plans and illustrations are subject to change as maybe required or approved by the relevant authorities.
- All floor areas are approximate only and subject to final survey.
- Please refer to the key plan for orientation.
- High volume space in (pd) unit does not constitute strata area.
- Service voids are excluded from strata area.
- RC ledge and / or RC trellis are excluded from strata area.

0 1 2 3 5M



# 1 BEDROOM + STUDY

## Type AS1b(PES)

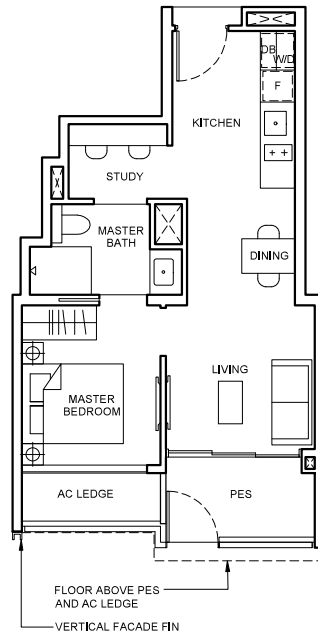
46 sqm (495 sqft)

Block 34A

#01-41

Block 34B

#01-52

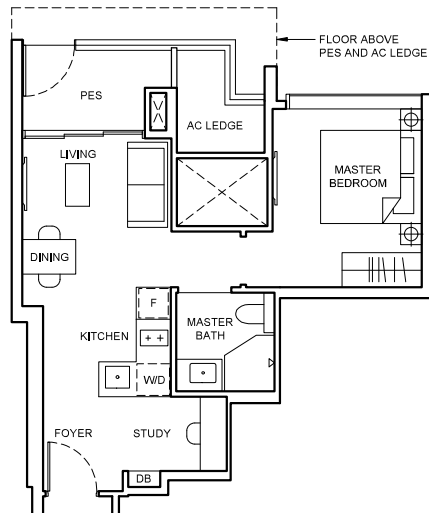


## Type AS2a(PES)

45 sqm (484 sqft)

Block 32B

#01-16

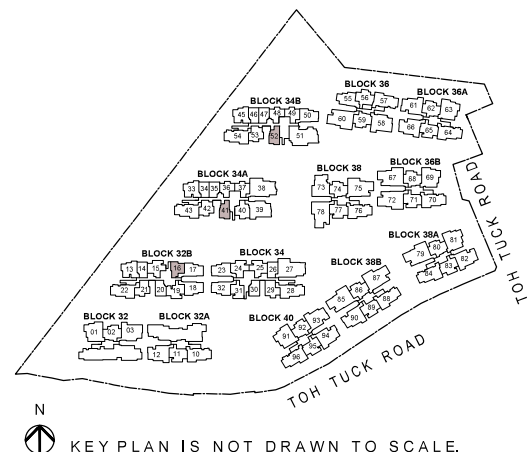


### LEGEND

[W/D]	WASHER CUM DRYER	[F]	INTEGRATED FRIDGE
-------	------------------	-----	-------------------

### Note

- Area includes AC ledge, balcony and private enclosed space (PES), strata void (where applicable).
- The above plans and illustrations are subject to change as maybe required or approved by the relevant authorities.
- All floor areas are approximate only and subject to final survey.
- Please refer to the key plan for orientation.
- High volume space in (pd) unit does not constitute strata area.
- Service voids are excluded from strata area.
- RC ledge and / or RC trellis are excluded from strata area.



KEY PLAN IS NOT DRAWN TO SCALE.

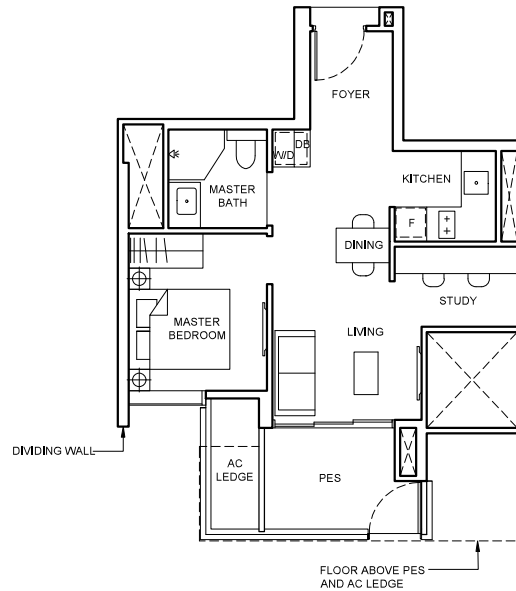
# 1 BEDROOM + STUDY

## Type AS2b(PES)

47 sqm (506 sqft)

Block 34

#01-31



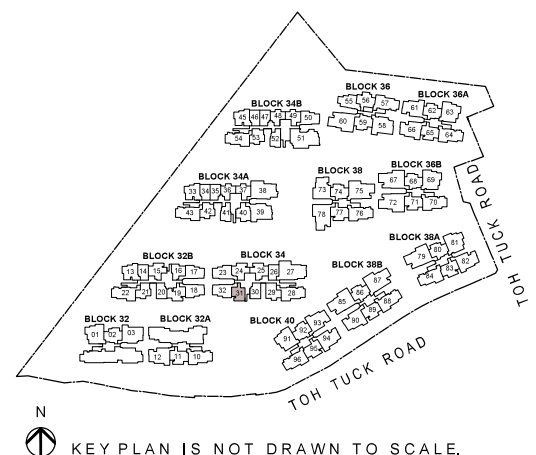
### LEGEND

[W/D] WASHER CUM DRYER [F] INTEGRATED FRIDGE

### Note

- Area includes AC ledge, balcony and private enclosed space (PES), strata void (where applicable).
- The above plans and illustrations are subject to change as maybe required or approved by the relevant authorities.
- All floor areas are approximate only and subject to final survey.
- Please refer to the key plan for orientation.
- High volume space in (pd) unit does not constitute strata area.
- Service voids are excluded from strata area.
- RC ledge and / or RC trellis are excluded from strata area.

0 1 2 3 5M



## 2 BEDROOM

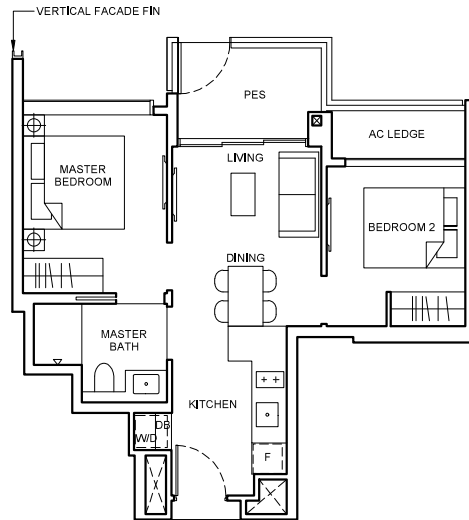
### Type B1(p) 51 sqm (549 sqft)

**Block 34A**

#01-36

**Block 34B**

#01-48



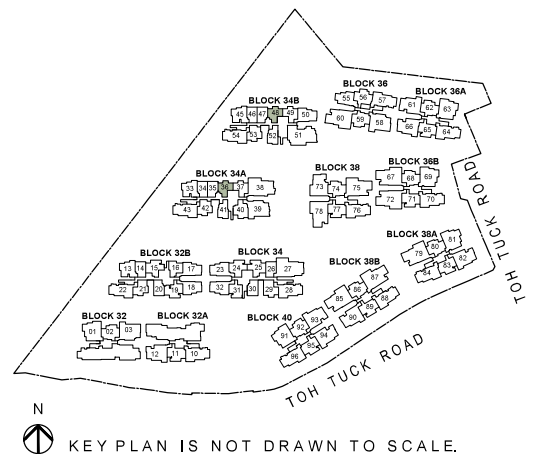
#### LEGEND

[WD] WASHER CUM DRYER [F] INTEGRATED FRIDGE

#### Note

- Area includes AC ledge, balcony and private enclosed space (PES), strata void (where applicable).
- The above plans and illustrations are subject to change as maybe required or approved by the relevant authorities.
- All floor areas are approximate only and subject to final survey.
- Please refer to the key plan for orientation.
- High volume space in (pd) unit does not constitute strata area.
- Service voids are excluded from strata area.
- RC ledge and / or RC trellis are excluded from strata area.

0 1 2 3 5M



## 2 BEDROOM

### Type B2a(p)

53 sqm (570 sqft)

**Block 32B**

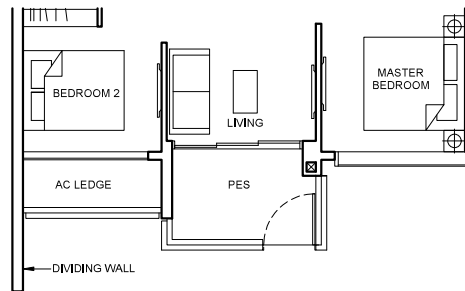
#01-21

**Block 34A**

#01-42

**Block 34B**

#01-53



### Type B2a

53 sqm (570 sqft)

**Block 32B**

#02-21 To #08-21

**Block 34A**

#02-42 To #08-42

**Block 34B**

#02-53 To #08-53

### Type B2a(PH)

65 sqm (700 sqft)

Strata void area of 12 sqm / 130 sqft above living and dining with high volume ceiling of 4415mm H.

Balcony at top floor is provided with canopy.

**Block 32B**

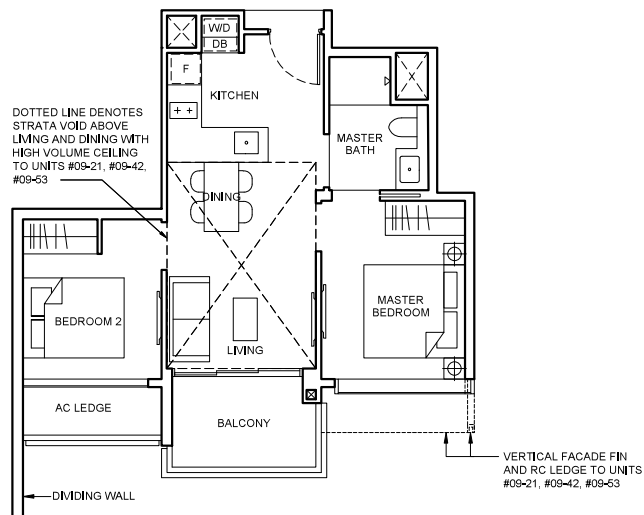
#09-21

**Block 34A**

#09-42

**Block 34B**

#09-53

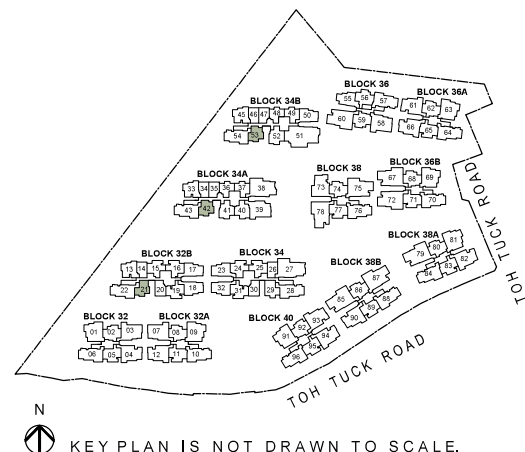


### LEGEND

[W/D]	WASHER CUM DRYER	[F]	INTEGRATED FRIDGE
-------	------------------	-----	-------------------

### Note

- Area includes AC ledge, balcony and private enclosed space (PES), strata void (where applicable).
- The above plans and illustrations are subject to change as maybe required or approved by the relevant authorities.
- All floor areas are approximate only and subject to final survey.
- Please refer to the key plan for orientation.
- High volume space in (pd) unit does not constitute strata area.
- Service voids are excluded from strata area.
- RC ledge and / or RC trellis are excluded from strata area.



## 2 BEDROOM

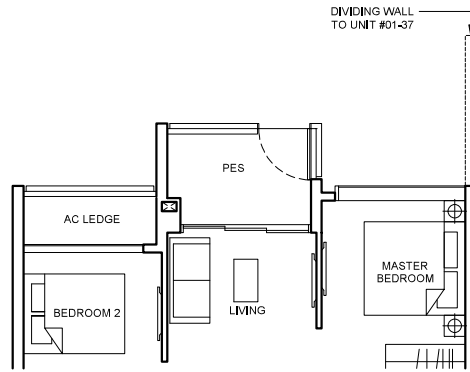
### Type B2b(p) 53 sqm (570 sqft)

**Block 34A**

#01-37

**Block 34B**

#01-49



### Type B2b 53 sqm (570 sqft)

Balcony at top floor is provided with canopy.

**Block 34A**

#02-37 To #09-37

**Block 34B**

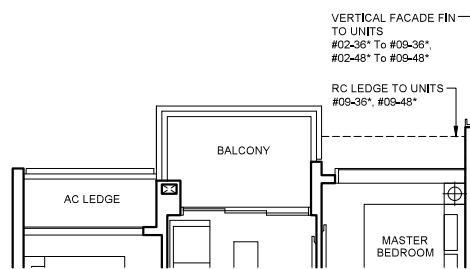
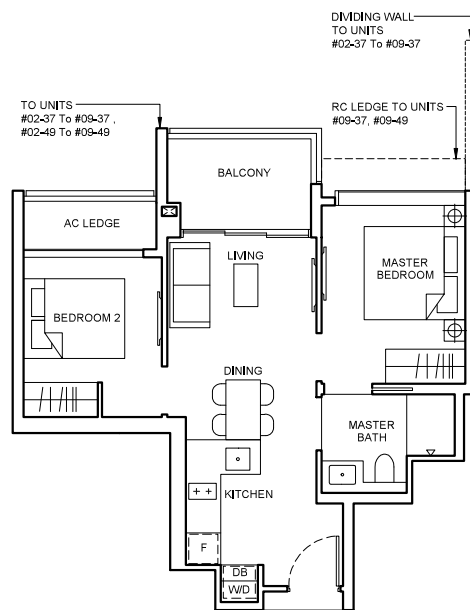
#02-49 To #09-49

**MIRRORED  
Block 34A**

#02-36\* To #09-36\*

**Block 34B**

#02-48\* To #09-48\*



Applicable to units #02-36\* To #09-36\*  
#02-48\* To #09-48\*

### LEGEND

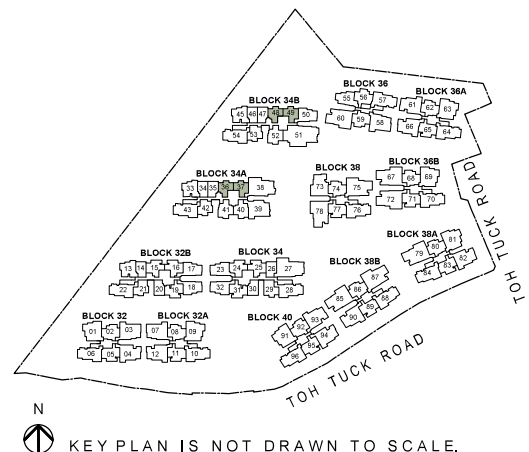
[W/D] WASHER CUM DRYER

[F] INTEGRATED FRIDGE

### Note

- Area includes AC ledge, balcony and private enclosed space (PES), strata void (where applicable).
- The above plans and illustrations are subject to change as maybe required or approved by the relevant authorities.
- All floor areas are approximate only and subject to final survey.
- Please refer to the key plan for orientation.
- High volume space in (pd) unit does not constitute strata area.
- Service voids are excluded from strata area.
- RC ledge and / or RC trellis are excluded from strata area.

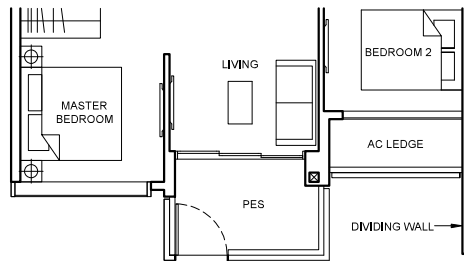
0 1 2 3 5M



## 2 BEDROOM

### Type B2c(p) 56 sqm (603 sqft)

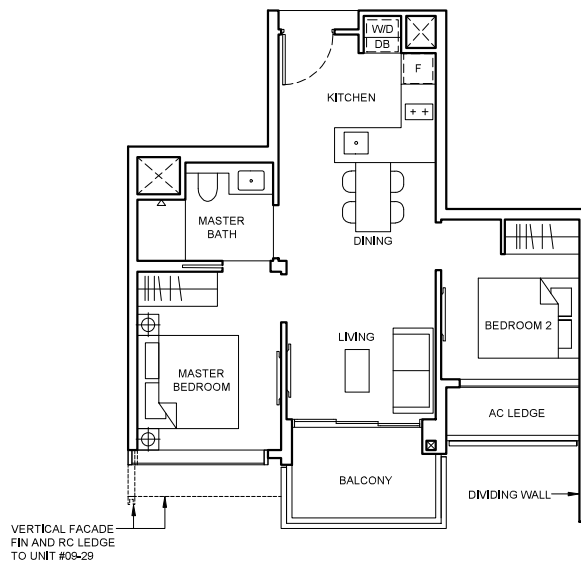
**Block 34**  
#01-29



### Type B2c 56 sqm (603 sqft)

Balcony at top floor is provided with canopy.

**Block 34**  
#02-29 To #09-29



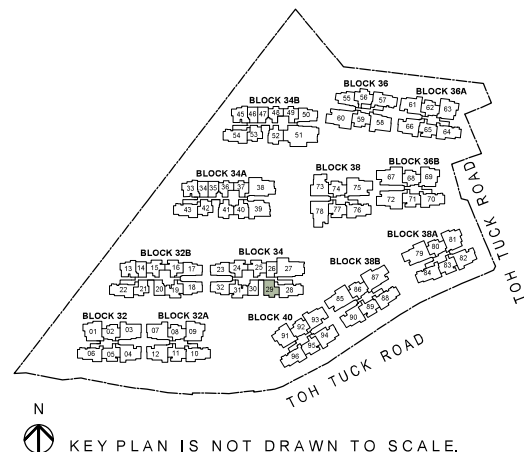
### LEGEND

[W/D] WASHER CUM DRYER [F] INTEGRATED FRIDGE

### Note

- Area includes AC ledge, balcony and private enclosed space (PES), strata void (where applicable).
- The above plans and illustrations are subject to change as maybe required or approved by the relevant authorities.
- All floor areas are approximate only and subject to final survey.
- Please refer to the key plan for orientation.
- High volume space in (pd) unit does not constitute strata area.
- Service voids are excluded from strata area.
- RC ledge and / or RC trellis are excluded from strata area.

0 1 2 3 5M



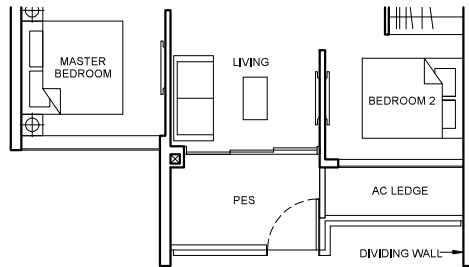
# 2 BEDROOM + STUDY

## Type BS4(p)

64 sqm (689 sqft)

### Block 34A

#01-40



## Type BS4

64 sqm (689 sqft)

Balcony at top floor is provided with canopy.

### Block 34A

#02-40 To #09-40

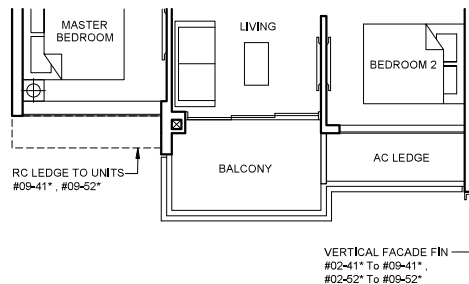
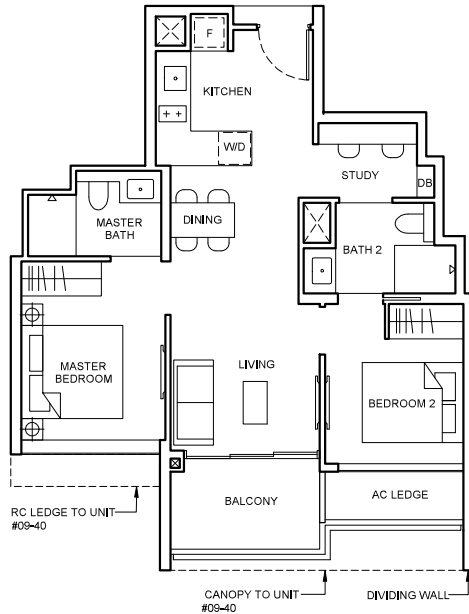
### MIRRORED

#### Block 34A

#02-41\* To #09-41\*

#### Block 34B

#02-52\* To #09-52\*



Applicable to units #02-41\* To #09-41\*  
#02-52\* To #09-52\*

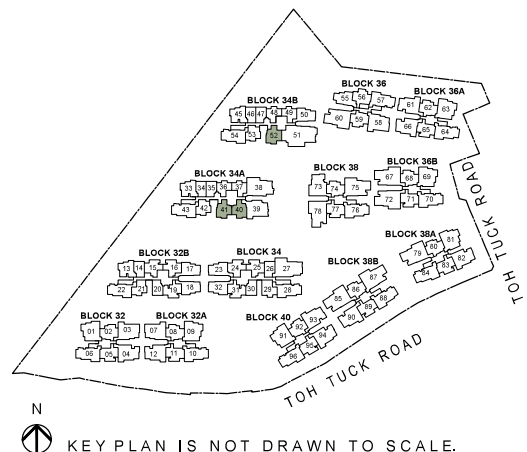
## LEGEND

[W/D] WASHER CUM DRYER [F] INTEGRATED FRIDGE

## Note

- Area includes AC ledge, balcony and private enclosed space (PES), strata void (where applicable).
- The above plans and illustrations are subject to change as maybe required or approved by the relevant authorities.
- All floor areas are approximate only and subject to final survey.
- Please refer to the key plan for orientation.
- High volume space in (pd) unit does not constitute strata area.
- Service voids are excluded from strata area.
- RC ledge and / or RC trellis are excluded from strata area.

0 1 2 3 5M



KEY PLAN IS NOT DRAWN TO SCALE.



# 2 BEDROOM + STUDY

## Type BS5a(p)

67 sqm (721 sqft)

**Block 32B**

#01-15

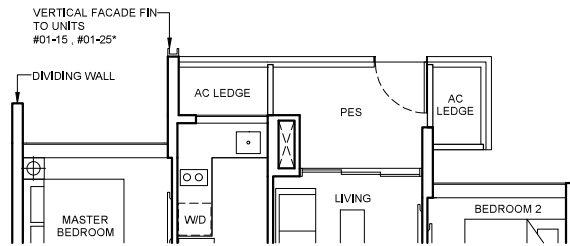
**Block 34**

#01-24

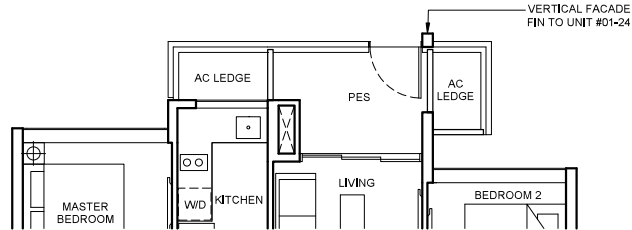
**MIRRORED**

**Block 34**

#01-25\*



Applicable to units #01-15, #01-25\*



Applicable to unit #01-24

## Type BS5a

67 sqm (721 sqft)

Balcony at top floor is provided with canopy.

**Block 32B**

#02-15 To #09-15

**Block 34**

#02-24 To #09-24

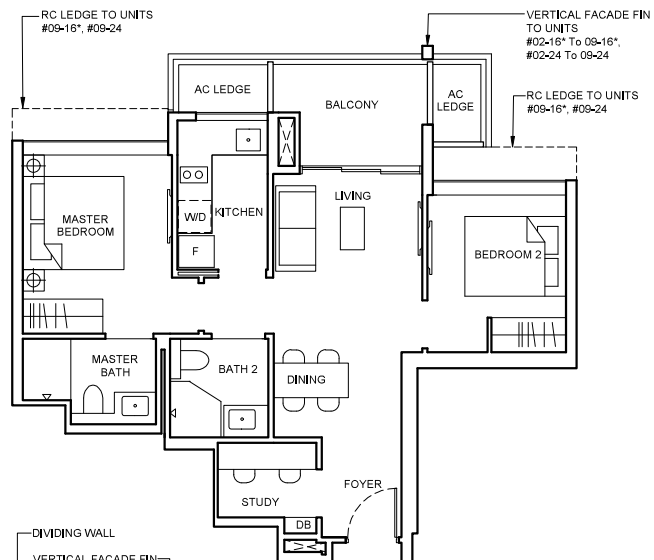
**MIRRORED**

**Block 32B**

#02-16\* To #09-16\*

**Block 34**

#02-25\* To #09-25\*



Applicable to units #02-15 To #09-15  
#02-25\* To #09-25\*

## LEGEND

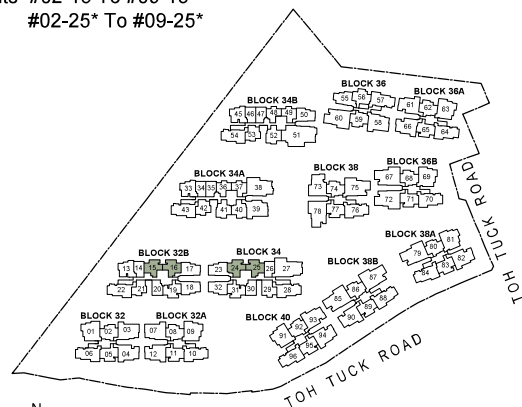
[W/D] WASHER CUM DRYER

[F] FRIDGE

## Note

- Area includes AC ledge, balcony and private enclosed space (PES), strata void (where applicable).
- The above plans and illustrations are subject to change as maybe required or approved by the relevant authorities.
- All floor areas are approximate only and subject to final survey.
- Please refer to the key plan for orientation.
- High volume space in (pd) unit does not constitute strata area.
- Service voids are excluded from strata area.
- RC ledge and / or RC trellis are excluded from strata area.

0 1 2 3 5M



KEY PLAN IS NOT DRAWN TO SCALE.

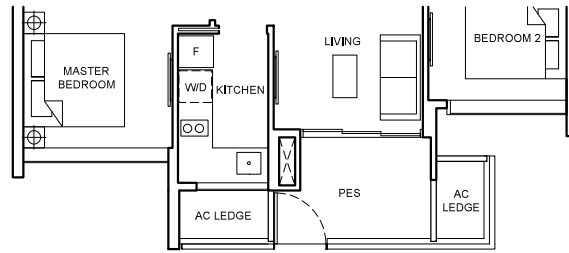
## 2 BEDROOM + STUDY

### Type BS5b(p)

67 sqm (721 sqft)

#### Block 32B

#01-19



### Type BS5b

67 sqm (721 sqft)

Balcony at top floor is provided with canopy.

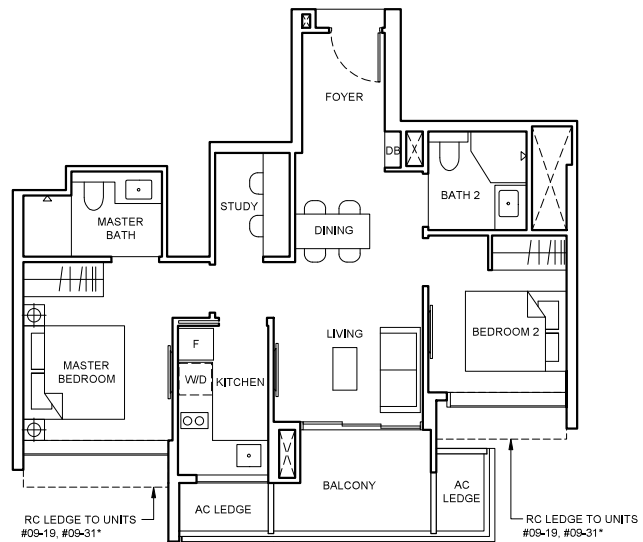
#### Block 32B

#02-19 To #09-19

#### MIRRORED

#### Block 34

#02-31\* To #09-31\*



### LEGEND

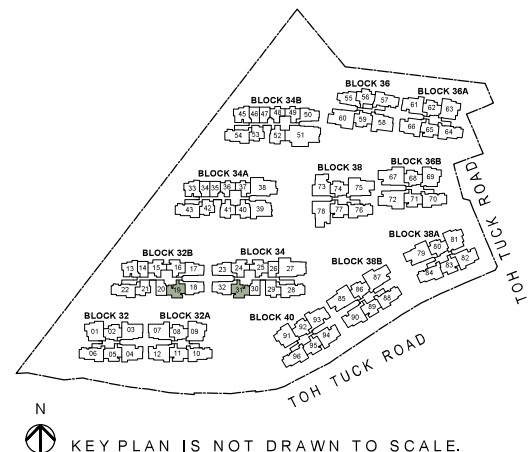
[W/D] WASHER CUM DRYER

[F] FRIDGE

### Note

- Area includes AC ledge, balcony and private enclosed space (PES), strata void (where applicable).
- The above plans and illustrations are subject to change as maybe required or approved by the relevant authorities.
- All floor areas are approximate only and subject to final survey.
- Please refer to the key plan for orientation.
- High volume space in (pd) unit does not constitute strata area.
- Service voids are excluded from strata area.
- RC ledge and / or RC trellis are excluded from strata area.

0 1 2 3 5M



KEY PLAN IS NOT DRAWN TO SCALE.

## 2 BEDROOM + STUDY

### Type BS6a(p)

67 sqm (721 sqft)

**Block 32B**

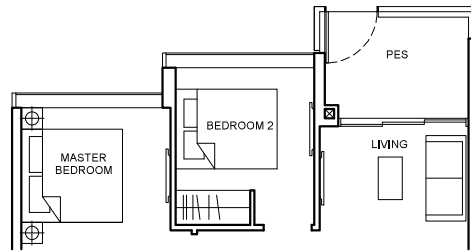
#01-13

**Block 34A**

#01-33

**Block 34B**

#01-45



### Type BS6a

67 sqm (721 sqft)

**Block 32B**

#02-13 To #08-13

**Block 34A**

#02-33 To #08-33

**Block 34B**

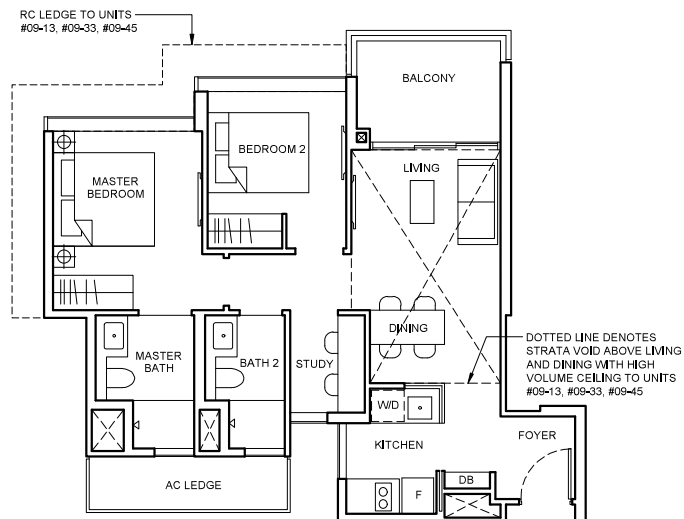
#02-45 To #08-45

### Type BS6a(PH)

80 sqm (861 sqft)

Strata void area of 13 sqm / 140 sqft above living and dining with high volume ceiling of 4415mm H.

Balcony at top floor is provided with canopy.



**Block 32B**

#09-13

**Block 34A**

#09-33

**Block 34B**

#09-45

### LEGEND

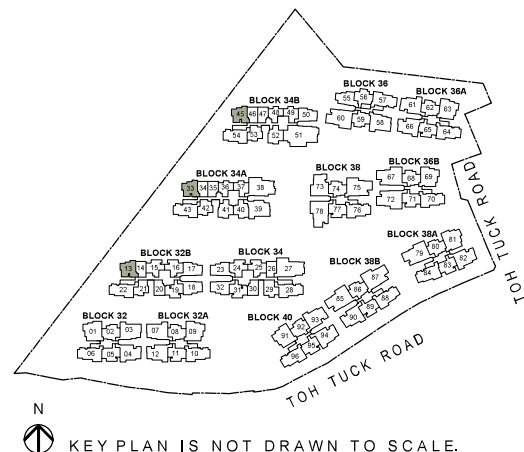
[W/D] WASHER CUM DRYER

[F] FRIDGE

### Note

- Area includes AC ledge, balcony and private enclosed space (PES), strata void (where applicable).
- The above plans and illustrations are subject to change as maybe required or approved by the relevant authorities.
- All floor areas are approximate only and subject to final survey.
- Please refer to the key plan for orientation.
- High volume space in (pd) unit does not constitute strata area.
- Service voids are excluded from strata area.
- RC ledge and / or RC trellis are excluded from strata area.

0 1 2 3 5M



KEY PLAN IS NOT DRAWN TO SCALE.

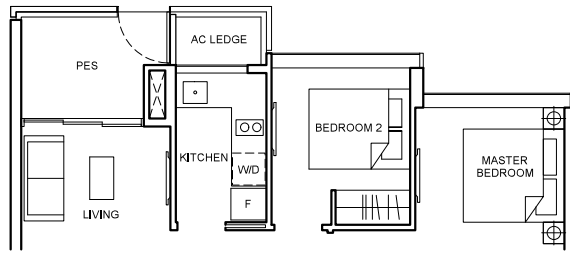
## 2 BEDROOM + STUDY

### Type BS6b(p)

70 sqm (753 sqft)

#### Block 34B

#01-50



### Type BS6b

70 sqm (753 sqft)

#### Block 34B

#02-50 To #08-50

### Type BS6b(PH)

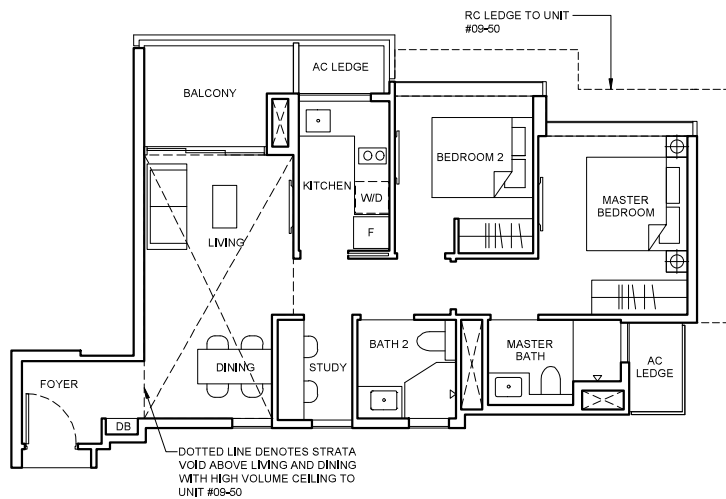
84 sqm (904 sqft)

Strata void area of 14 sqm / 151 sqft above living and dining with high volume ceiling of 4415mm H.

Balcony at top floor is provided with canopy.

#### Block 34B

#09-50



### LEGEND

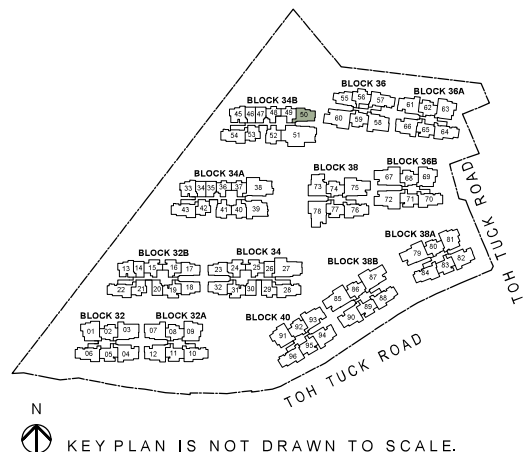
[WD] WASHER CUM DRYER

[F] FRIDGE

### Note

- Area includes AC ledge, balcony and private enclosed space (PES), strata void (where applicable).
- The above plans and illustrations are subject to change as maybe required or approved by the relevant authorities.
- All floor areas are approximate only and subject to final survey.
- Please refer to the key plan for orientation.
- High volume space in (pd) unit does not constitute strata area.
- Service voids are excluded from strata area.
- RC ledge and / or RC trellis are excluded from strata area.

0 1 2 3 5M



## 2 BEDROOM + STUDY

### Type BS6c(p)

71 sqm (764 sqft)

#### Block 32B

#01-17

#### Block 34

#01-32

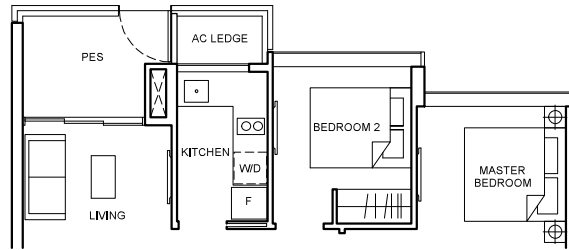
#### MIRRORED

#### Block 32B

#01-18\*

#### Block 34

#01-23\*



### Type BS6c

71 sqm (764 sqft)

#### Block 32B

#02-17 To #08-17

#### Block 34

#02-32 To #09-32

#### MIRRORED

#### Block 32B

#02-18\* To #08-18\*

#### Block 34

#02-23\* To #09-23\*

### Type BS6c(PH)

85 sqm (915 sqft)

Strata void area of 14 sqm / 151 sqft above living and dining with high volume ceiling of 4415mm H.

Balcony at top floor is provided with canopy.

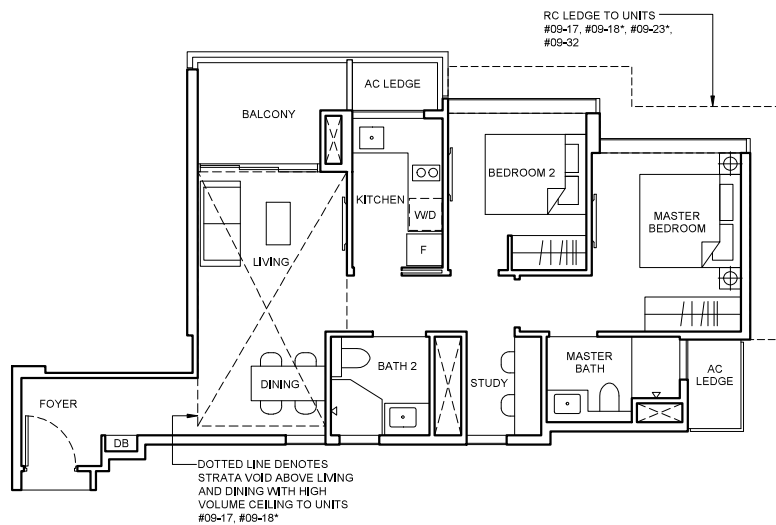
#### Block 32B

#09-17

#### MIRRORED

#### Block 32B

#09-18\*



### LEGEND

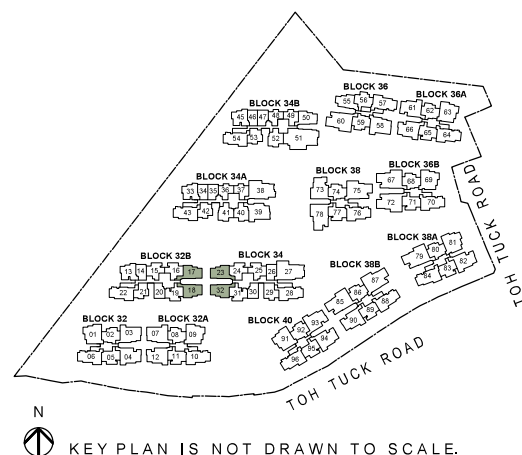
[W/D] WASHER CUM DRYER

[F] FRIDGE

### Note

- Area includes AC ledge, balcony and private enclosed space (PES), strata void (where applicable).
- The above plans and illustrations are subject to change as maybe required or approved by the relevant authorities.
- All floor areas are approximate only and subject to final survey.
- Please refer to the key plan for orientation.
- High volume space in (pd) unit does not constitute strata area.
- Service voids are excluded from strata area.
- RC ledge and / or RC trellis are excluded from strata area.

0 1 2 3 5M



## 2 BEDROOM DELUXE

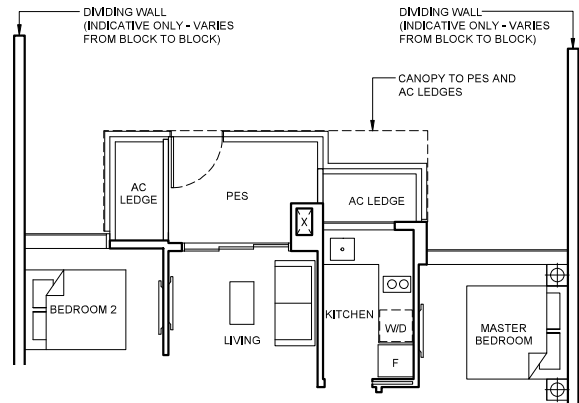
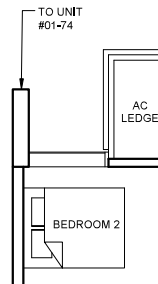
### Type BHS1a(pd)

68 sqm (732 sqft)

**Block 36A**  
#01-62  
**Block 36B**  
#01-68  
**Block 38**  
#01-74  
**Block 38A**  
#01-80  
**Block 38B**  
#01-86

#### MIRRORED

**Block 32**  
#01-02\*  
**Block 36**  
#01-59\*  
**Block 40**  
#01-92\*



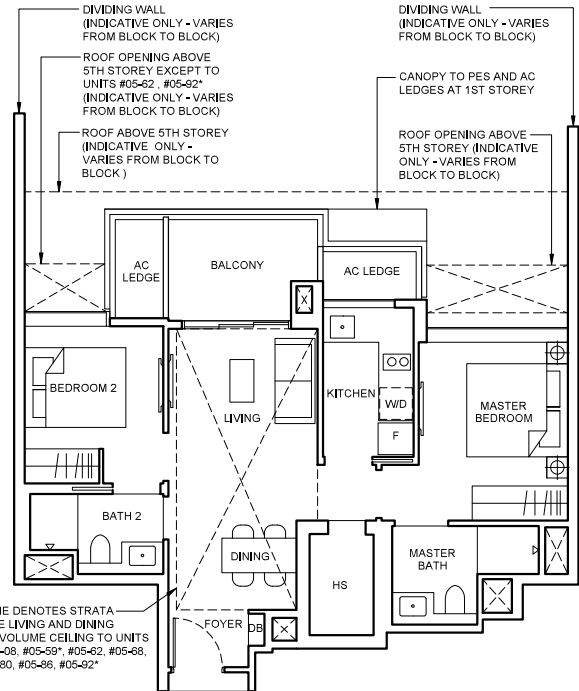
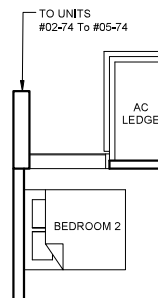
### Type BHS1a

68 sqm (732 sqft)

**Block 32A**  
#02-08 To #04-08  
**Block 36A**  
#02-62 To #04-62  
**Block 36B**  
#02-68 To #04-68  
**Block 38**  
#02-74 To #04-74  
**Block 38A**  
#02-80 To #04-80  
**Block 38B**  
#02-86 To #04-86

#### MIRRORED

**Block 32**  
#02-02\* To #04-02\*  
**Block 36**  
#02-59\* To #04-59\*  
**Block 40**  
#02-92\* To #04-92\*



### Type BHS1a(PH)

84 sqm (904 sqft)

Strata void area of 16 sqm / 172 sqft above living and dining with high volume ceiling of 4590mm H.

**Block 32A**  
#05-08  
**Block 36A**  
#05-62  
**Block 36B**  
#05-68  
**Block 38**  
#05-74  
**Block 38A**  
#05-80  
**Block 38B**  
#05-86

#### MIRRORED

**Block 32**  
#05-02\*  
**Block 36**  
#05-59\*  
**Block 40**  
#05-92\*

#### LEGEND

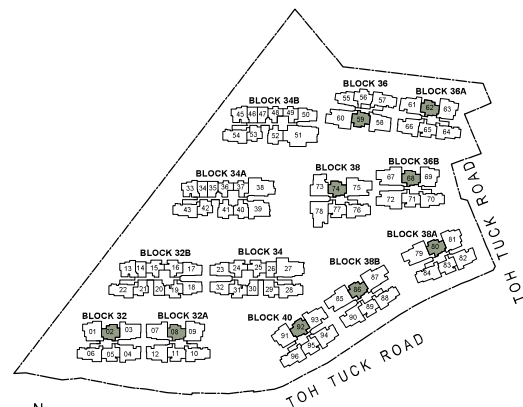
[W/D] WASHER CUM DRYER

[F] FRIDGE

#### Note

- Area includes AC ledge, balcony and private enclosed space (PES), strata void (where applicable).
- The above plans and illustrations are subject to change as maybe required or approved by the relevant authorities.
- All floor areas are approximate only and subject to final survey.
- Please refer to the key plan for orientation.
- High volume space in (pd) unit does not constitute strata area.
- Service voids are excluded from strata area.
- RC ledge and / or RC trellis are excluded from strata area.

0 1 2 3 5M



KEY PLAN IS NOT DRAWN TO SCALE.

# 2 BEDROOM DELUXE

## Type BHS1b(pd)

69 sqm (743 sqft)

### Block 32A

#01-11

### Block 36A

#01-65

### Block 36B

#01-71

### Block 38

#01-77

### Block 38B

#01-89

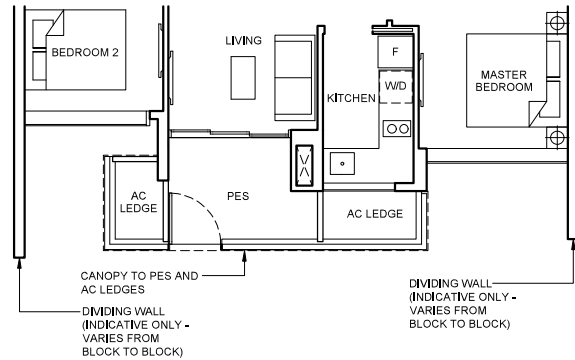
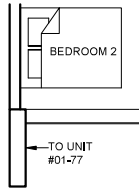
### MIRRORED

### Block 38A

#01-83\*

### Block 40

#01-95\*



## Type BHS1b

69 sqm (743 sqft)

### Block 32A

#02-11 To #04-11

### Block 36A

#02-65 To #04-65

### Block 36B

#02-71 To #04-71

### Block 38

#02-77 To #04-77

### Block 38B

#02-89 To #04-89

### MIRRORED

### Block 32

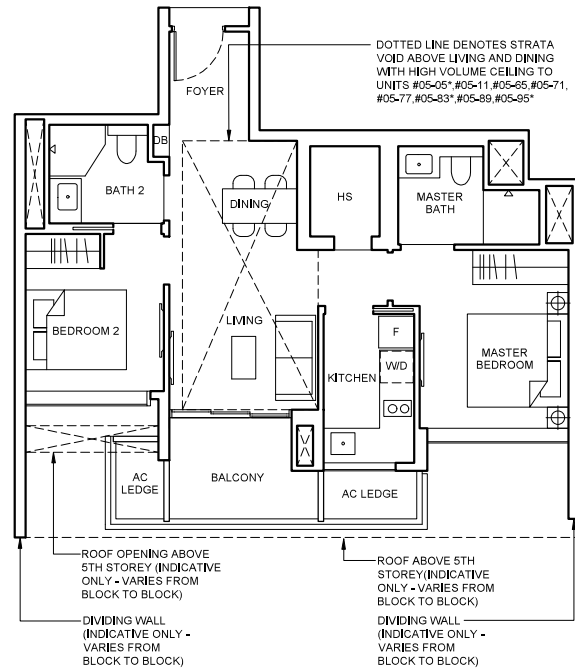
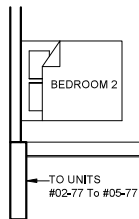
#02-05\* To #04-05\*

### Block 38A

#02-83\* To #04-83\*

### Block 40

#02-95\* To #04-95\*



## Type BHS1b(PH)

83 sqm (893 sqft)

strata void area of 14 sqm / 150 sqft above living and dining with high volume ceiling of 4590mm H.

### Block 32A

#05-11

### Block 36A

#05-65

### Block 36B

#05-71

### Block 38

#05-77

### Block 38B

#05-89

### MIRRORED

### Block 32

#05-05\*

### Block 38A

#05-83\*

### Block 40

#05-95\*

## LEGEND

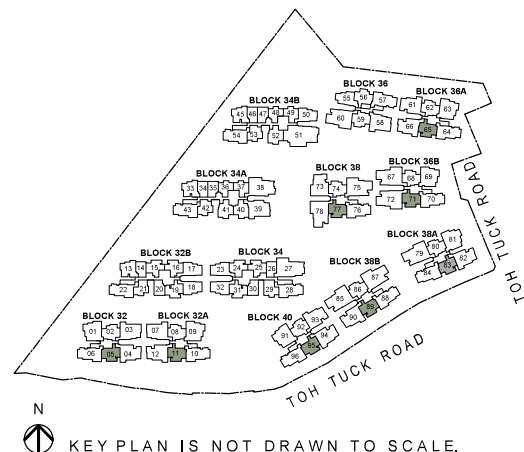
[W/D] WASHER CUM DRYER

[F] FRIDGE

## Note

- Area includes AC ledge, balcony and private enclosed space (PES), strata void (where applicable).
- The above plans and illustrations are subject to change as maybe required or approved by the relevant authorities.
- All floor areas are approximate only and subject to final survey.
- Please refer to the key plan for orientation.
- High volume space in (pd) unit does not constitute strata area.
- Service voids are excluded from strata area.
- RC ledge and / or RC trellis are excluded from strata area.

0 1 2 3 5M



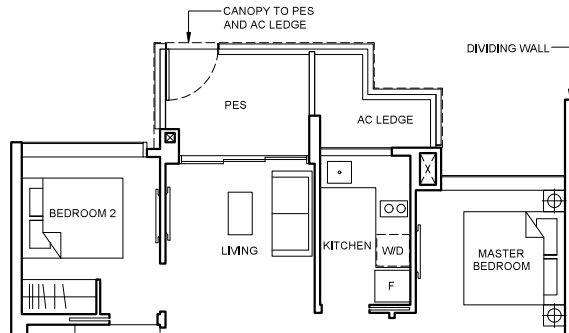
## 2 BEDROOM DELUXE

### Type BHS1c(pd)

71 sqm (764 sqft)

Block 36

#01-56



### Type BHS1c

71 sqm (764 sqft)

Block 36

#02-56 To #04-56

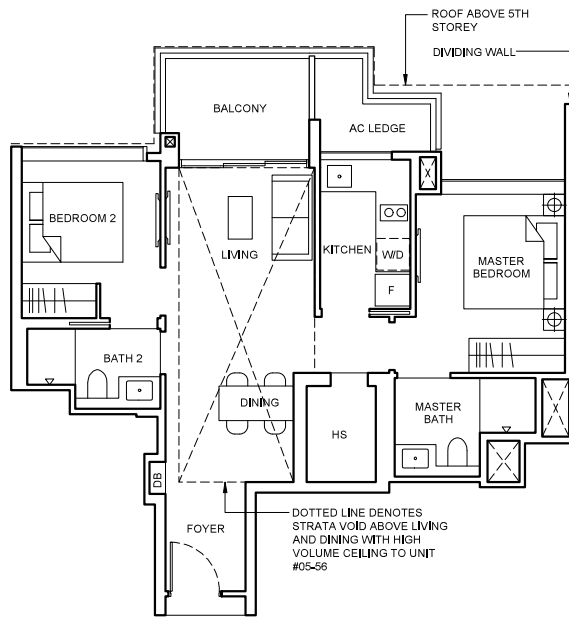
### Type BHS1c(PH)

88 sqm (947 sqft)

Strata void area of 17 sqm / 183 sqft above living and dining with high volume ceiling of 4590mm H.

Block 36

#05-56



### LEGEND

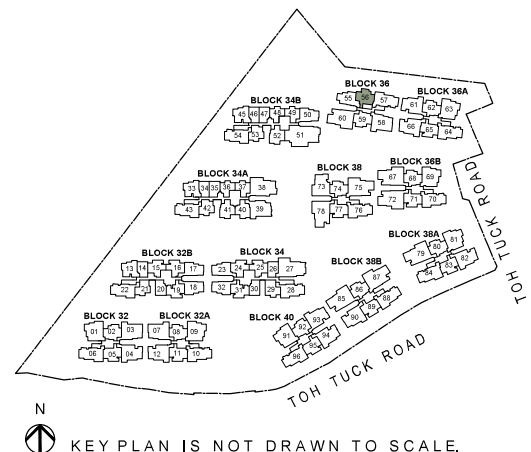
[W/D] WASHER CUM DRYER

[F] FRIDGE

### Note

- Area includes AC ledge, balcony and private enclosed space (PES), strata void (where applicable).
- The above plans and illustrations are subject to change as maybe required or approved by the relevant authorities.
- All floor areas are approximate only and subject to final survey.
- Please refer to the key plan for orientation.
- High volume space in (pd) unit does not constitute strata area.
- Service voids are excluded from strata area.
- RC ledge and / or RC trellis are excluded from strata area.

0 1 2 3 5M





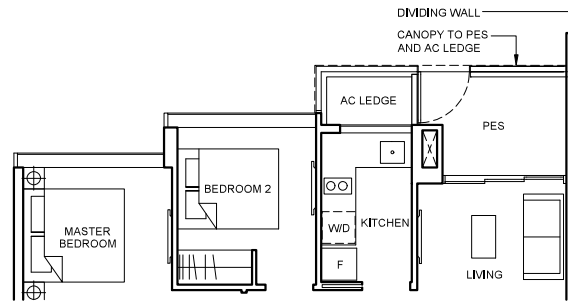
## 2 BEDROOM DELUXE

### Type BHS2(pd)

71 sqm (764 sqft)

Block 36

#01-55



### Type BHS2

71 sqm (764 sqft)

Block 36

#02-55 To #04-55

### Type BHS2(PH)

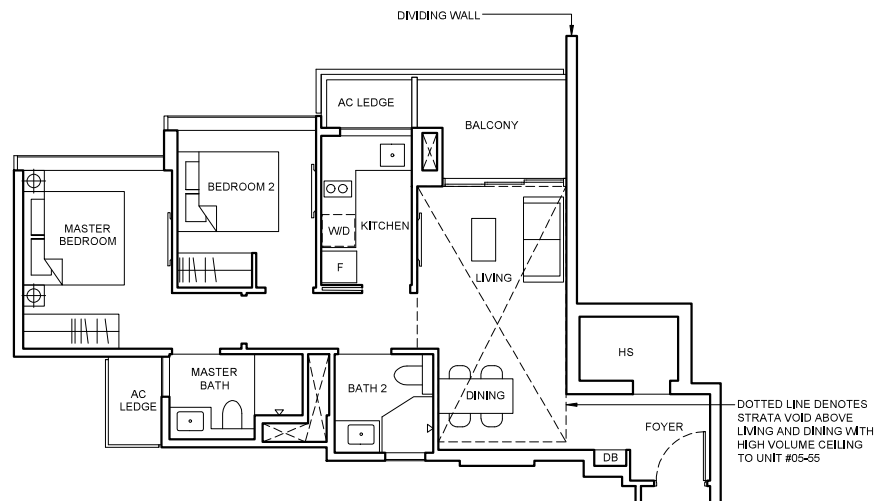
86 sqm (926 sqft)

Strata void area of 15 sqm / 162 sqft above living and dining with high volume ceiling of 4590mm H.

Balcony at top floor is provided with canopy.

Block 36

#05-55



### LEGEND

[W/D] WASHER CUM DRYER

[F] FRIDGE

### Note

- Area includes AC ledge, balcony and private enclosed space (PES), strata void (where applicable).
- The above plans and illustrations are subject to change as maybe required or approved by the relevant authorities.
- All floor areas are approximate only and subject to final survey.
- Please refer to the key plan for orientation.
- High volume space in (pd) unit does not constitute strata area.
- Service voids are excluded from strata area.
- RC ledge and / or RC trellis are excluded from strata area.

0 1 2 3 5M

