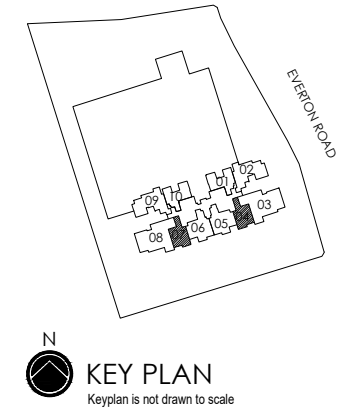
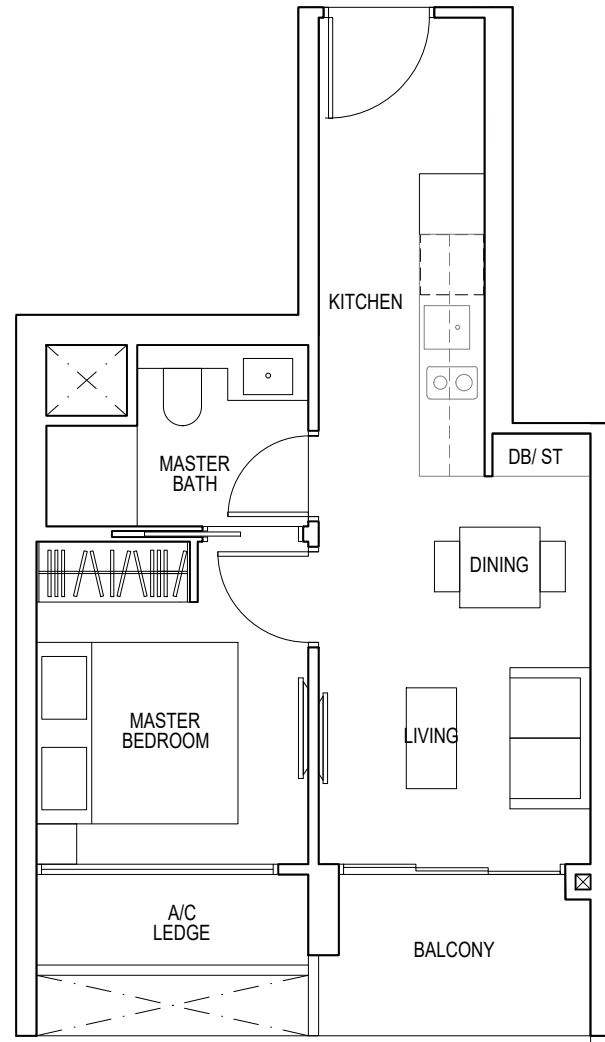


1 - BEDROOM

TYPE A1

43 sq m / 463 sq ft

- #06-04* to #12-04*
- #06-07 to #12-07
- #15-04* to #22-04*
- #15-07 to #22-07



*Mirror Image



Area includes air-con (A/C) ledge, balcony and strata void area where applicable. Some units are mirror images of the apartment plans shown in the brochure. Please refer to the key plan for orientation. The plans are subject to change as may be approved by relevant authorities. All floor plans are approximate measurements only and are subject to government re-survey. The balcony shall not be enclosed unless with the approved balcony screen. For an illustration of the approved balcony screen, please refer to the diagram annexed hereto as "Annexure 1".

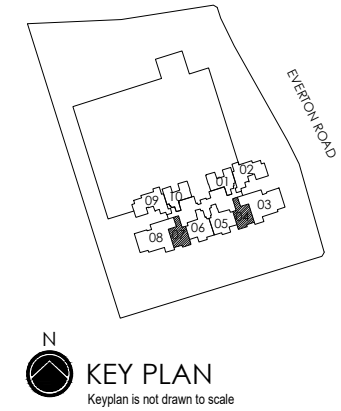
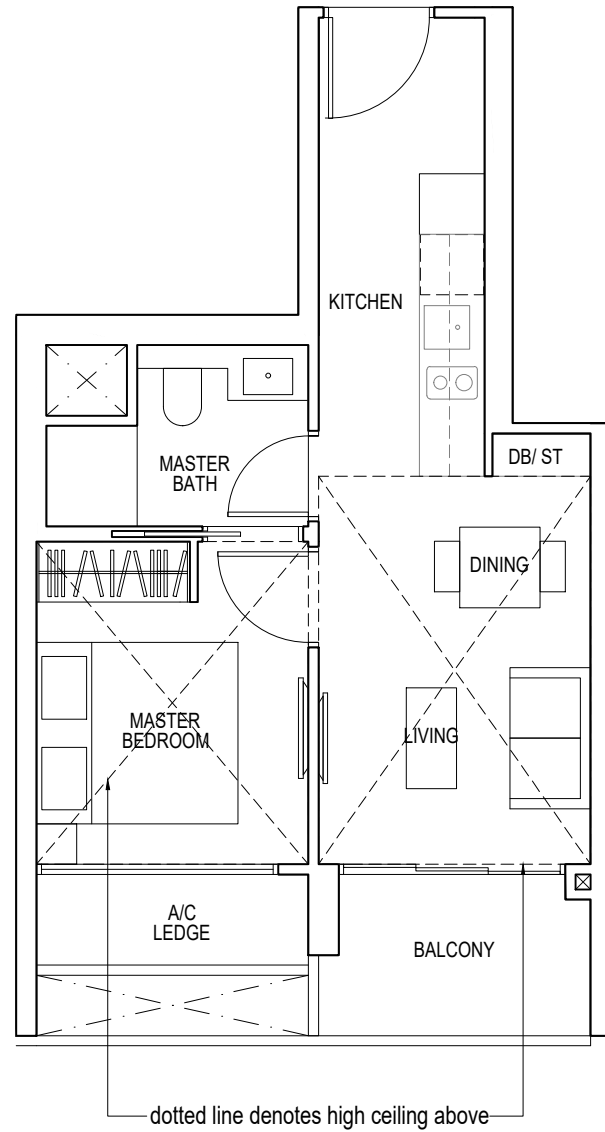
1 - BEDROOM

TYPE A2

55 sq m / 592 sq ft

including strata void area of 12 sq m / 129 sq ft
above living and dining
Approximate 6.0 m floor-to-ceiling height at living
and dining
Approximate 5.0 m floor-to-ceiling height at
master bedroom

#13-04*, #13-07, #23-04*, #23-07



*Mirror Image



Area includes air-con (A/C) ledge, balcony and strata void area where applicable. Some units are mirror images of the apartment plans shown in the brochure. Please refer to the key plan for orientation. The plans are subject to change as may be approved by relevant authorities. All floor plans are approximate measurements only and are subject to government re-survey. The balcony shall not be enclosed unless with the approved balcony screen. For an illustration of the approved balcony screen, please refer to the diagram annexed hereto as "Annexure 1".

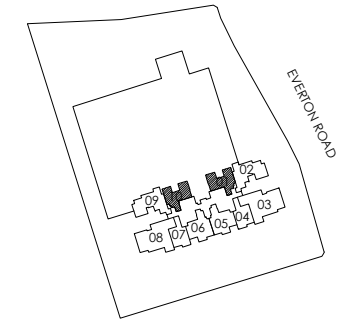
1 - BEDROOM + STUDY

TYPE A3

47 sq m / 506 sq ft

#06-01* to #12-01*

#06-10 to #12-10



N
KEY PLAN
Keyplan is not drawn to scale



*Mirror Image



Area includes air-con (A/C) ledge, balcony and strata void area where applicable. Some units are mirror images of the apartment plans shown in the brochure. Please refer to the key plan for orientation. The plans are subject to change as may be approved by relevant authorities. All floor plans are approximate measurements only and are subject to government re-survey. The balcony shall not be enclosed unless with the approved balcony screen. For an illustration of the approved balcony screen, please refer to the diagram annexed hereto as "Annexure 1".

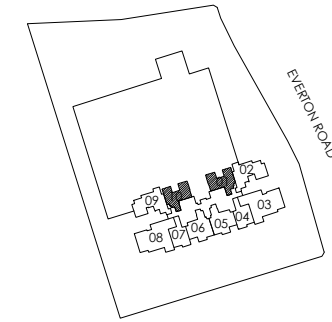
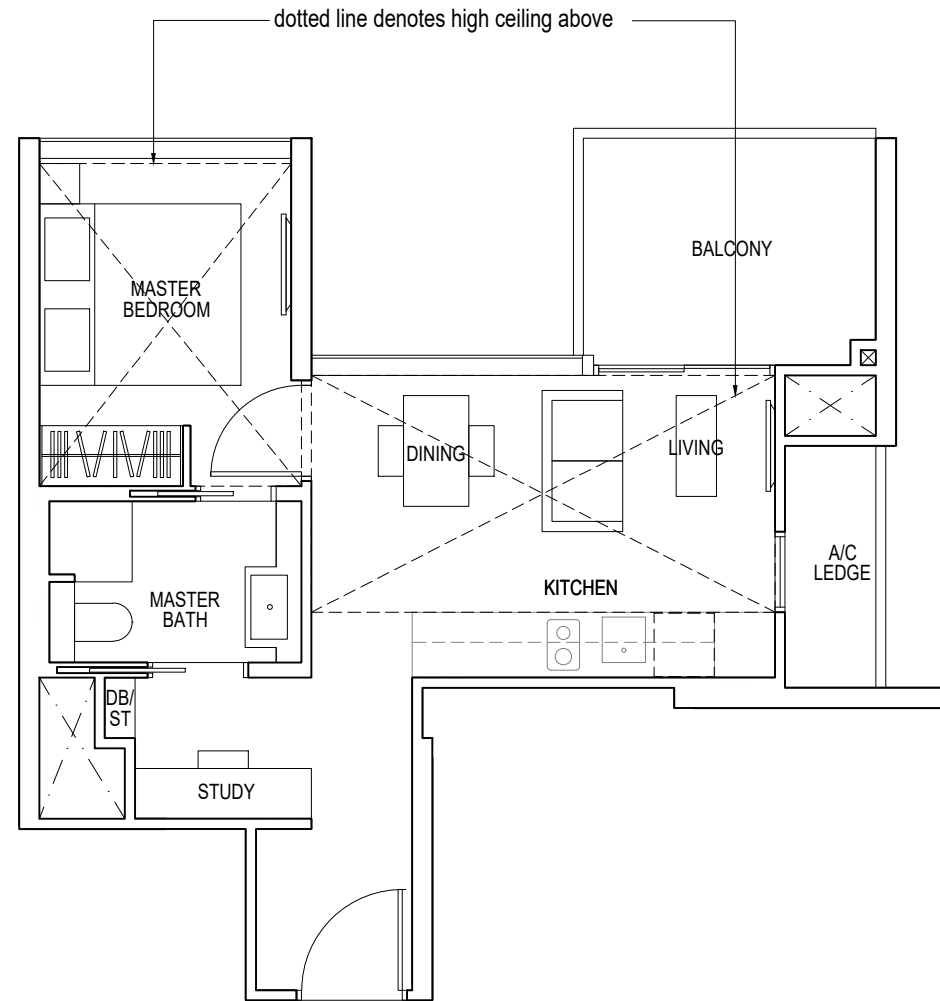
1 - BEDROOM + STUDY

TYPE A4

59 sq m / 635 sq ft

including strata void area of 12 sq m / 129 sq ft
above living and dining
Approximate 6.0 m floor-to-ceiling height at living and dining
Approximate 5.0 m floor-to-ceiling height at master bedroom

#13-01*, #13-10



N
KEY PLAN
Keyplan is not drawn to scale

*Mirror Image



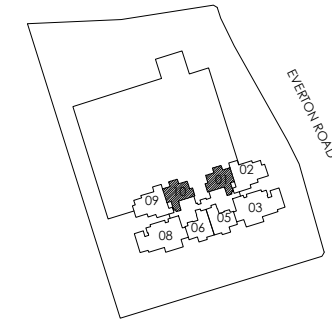
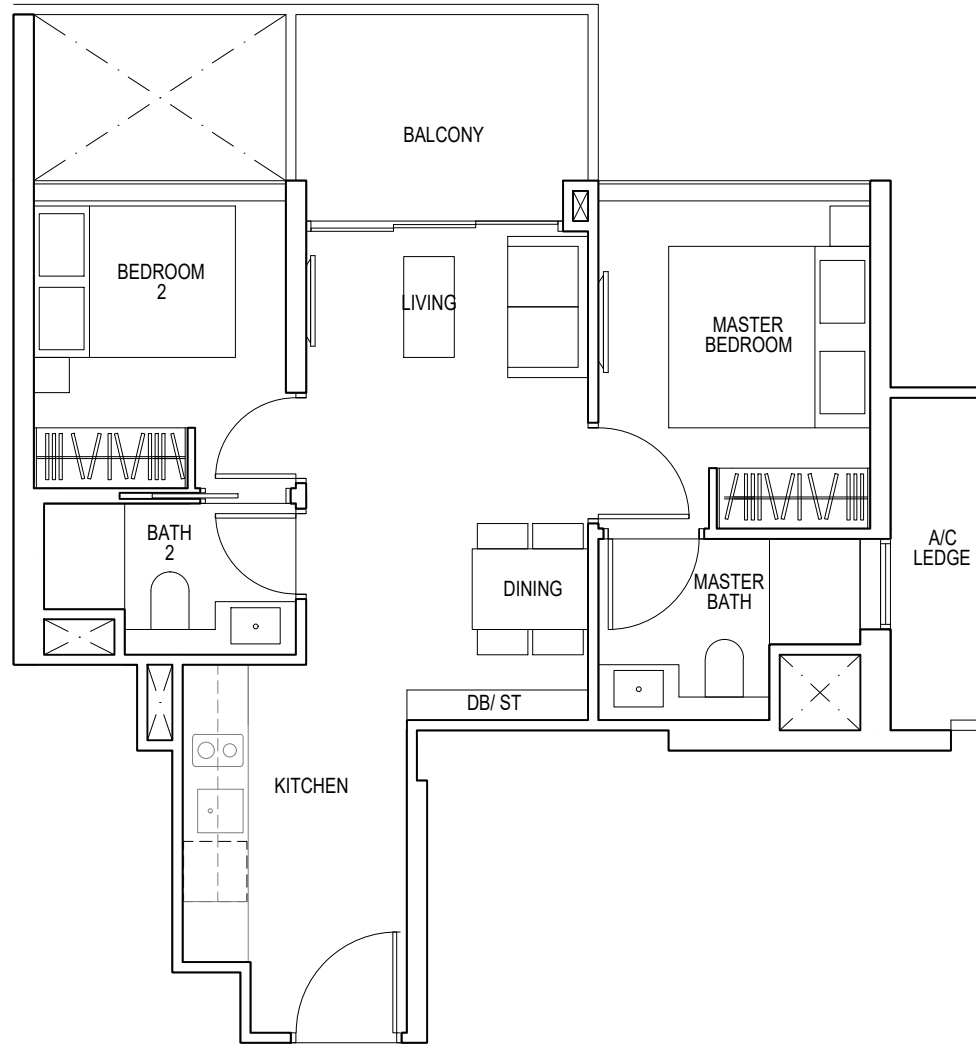
Area includes air-con (A/C) ledge, balcony and strata void area where applicable. Some units are mirror images of the apartment plans shown in the brochure. Please refer to the key plan for orientation. The plans are subject to change as may be approved by relevant authorities. All floor plans are approximate measurements only and are subject to government re-survey. The balcony shall not be enclosed unless with the approved balcony screen. For an illustration of the approved balcony screen, please refer to the diagram annexed hereto as "Annexure 1".

2 - BEDROOM

TYPE B1

60 sq m / 646 sq ft

- #15-01* to #22-01*
- #15-10 to #22-10
- #25-01* to #35-01*
- #25-10 to #35-10



N
KEY PLAN
Keyplan is not drawn to scale

*Mirror Image



Area includes air-con (A/C) ledge, balcony and strata void area where applicable. Some units are mirror images of the apartment plans shown in the brochure. Please refer to the key plan for orientation. The plans are subject to change as may be approved by relevant authorities. All floor plans are approximate measurements only and are subject to government re-survey. The balcony shall not be enclosed unless with the approved balcony screen. For an illustration of the approved balcony screen, please refer to the diagram annexed hereto as "Annexure 1".

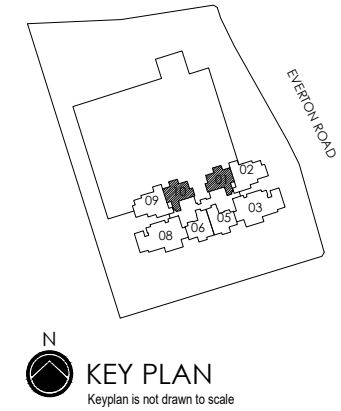
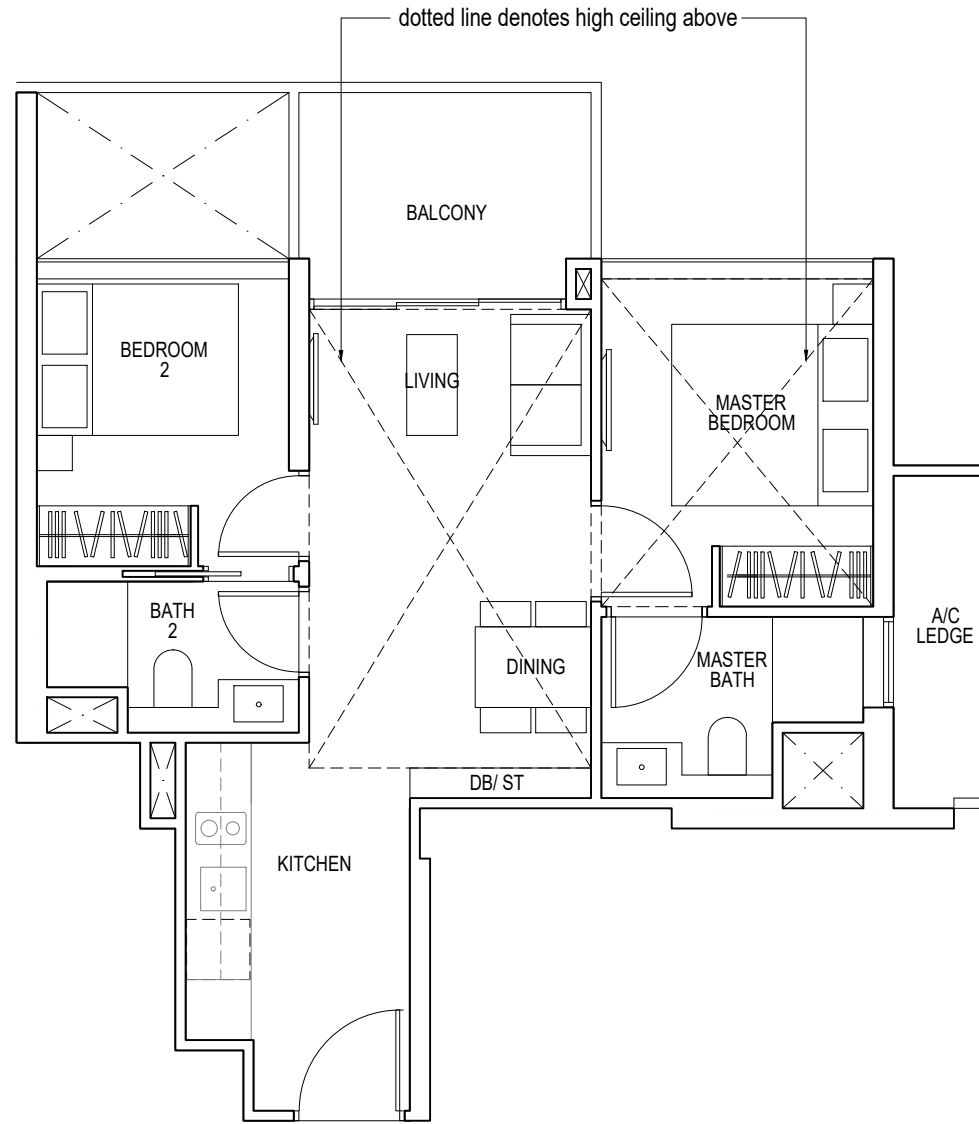
2 - BEDROOM

TYPE B2

75 sq m / 807 sq ft

including strata void area of 15 sq m / 161 sq ft
above living and dining
Approximate 6.0 m floor-to-ceiling height at living
and dining
Approximate 5.0 m floor-to-ceiling height at master
bedroom

#23-01*, #23-10



*Mirror Image



Area includes air-con (A/C) ledge, balcony and strata void area where applicable. Some units are mirror images of the apartment plans shown in the brochure. Please refer to the key plan for orientation. The plans are subject to change as may be approved by relevant authorities. All floor plans are approximate measurements only and are subject to government re-survey. The balcony shall not be enclosed unless with the approved balcony screen. For an illustration of the approved balcony screen, please refer to the diagram annexed hereto as "Annexure 1".

2 - BEDROOM

TYPE B3

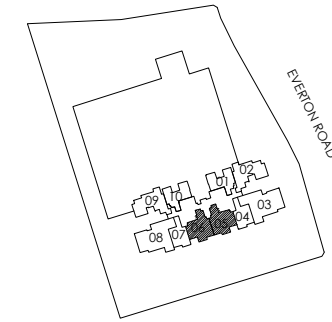
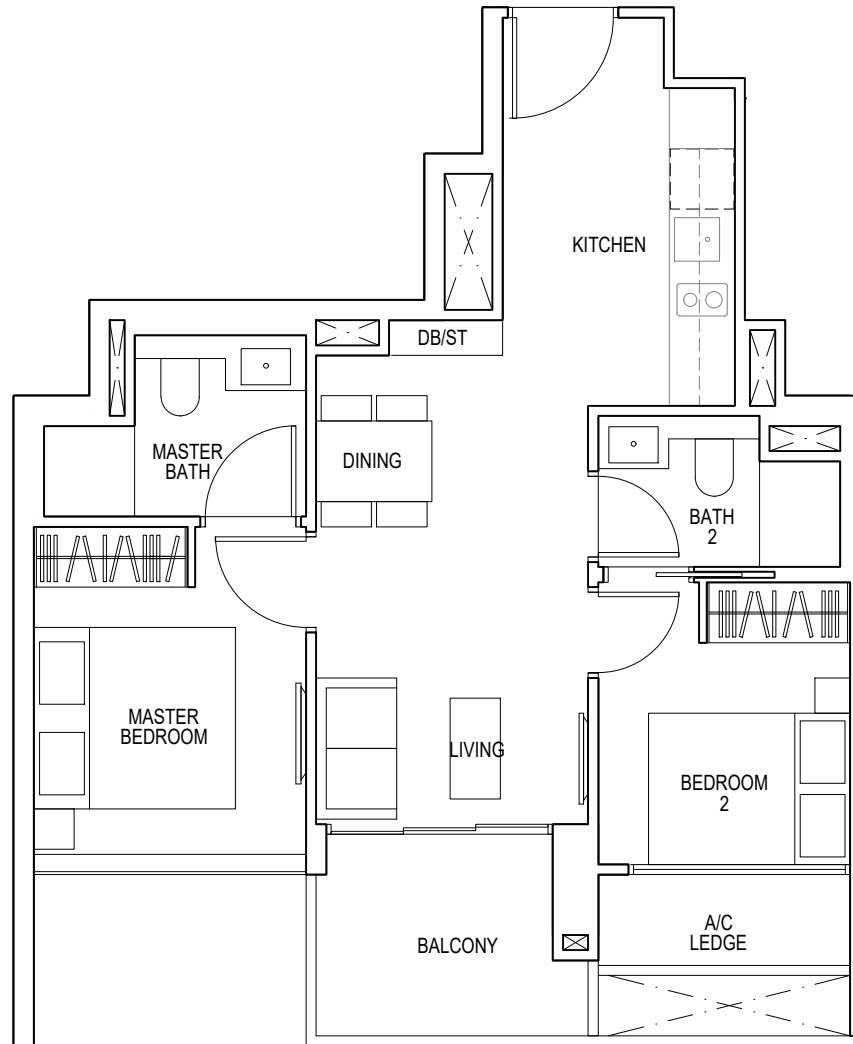
58 sq m / 624 sq ft

#06-05* to #12-05*

#06-06 to #12-06

#15-05* to #22-05*

#15-06 to #22-06



N
KEY PLAN
Keyplan is not drawn to scale

*Mirror Image



Area includes air-con (A/C) ledge, balcony and strata void area where applicable. Some units are mirror images of the apartment plans shown in the brochure. Please refer to the key plan for orientation. The plans are subject to change as may be approved by relevant authorities. All floor plans are approximate measurements only and are subject to government re-survey. The balcony shall not be enclosed unless with the approved balcony screen. For an illustration of the approved balcony screen, please refer to the diagram annexed hereto as "Annexure 1".

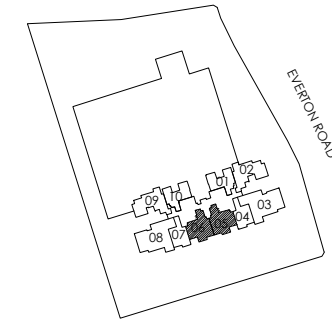
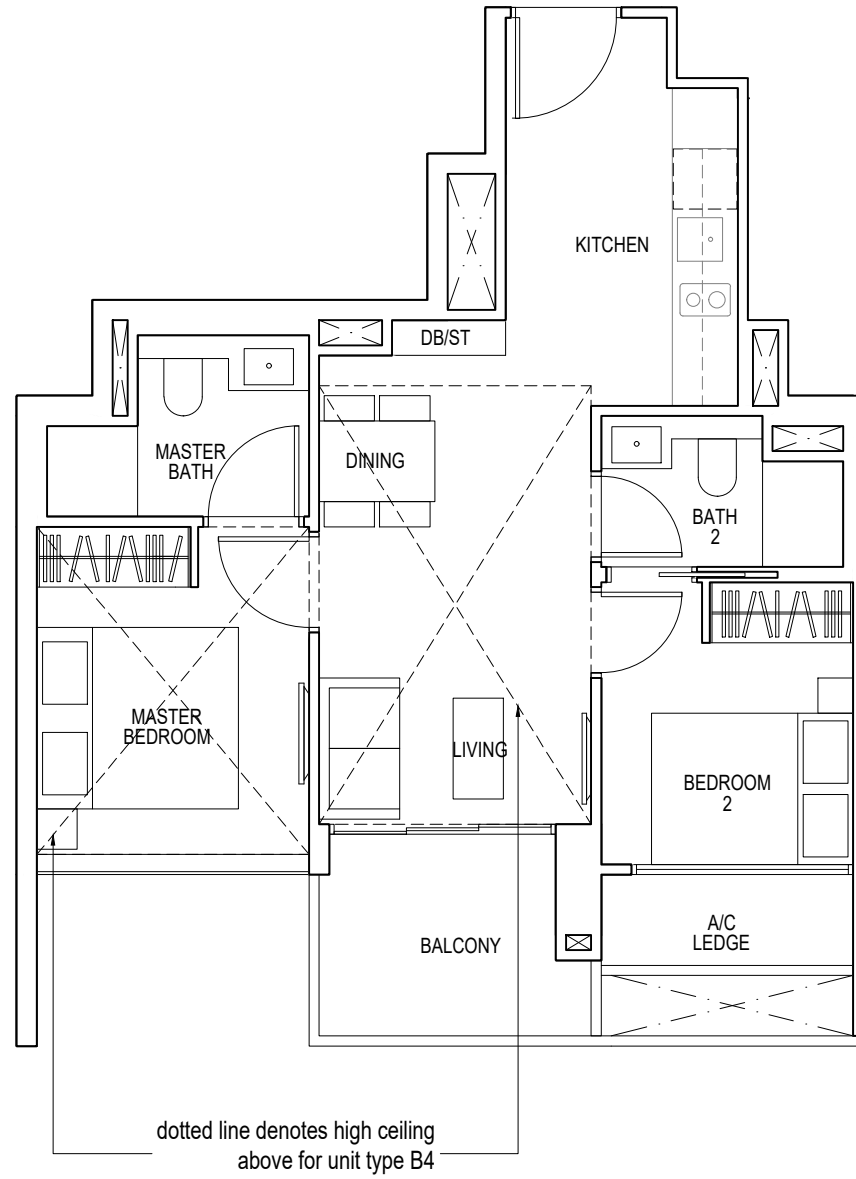
2 - BEDROOM

TYPE B4

71 sq m / 764 sq ft

including strata void area of 13 sq m / 140 sq ft
above living and dining
Approximate 6.0 m floor to ceiling height at living
and dining
Approximate 5.0 m floor to ceiling height at master
bedroom

#13-05*, #13-06
#23-05*, #23-06



N
KEY PLAN
Keyplan is not drawn to scale

*Mirror Image



Area includes air-con (A/C) ledge, balcony and strata void area where applicable. Some units are mirror images of the apartment plans shown in the brochure. Please refer to the key plan for orientation. The plans are subject to change as may be approved by relevant authorities. All floor plans are approximate measurements only and are subject to government re-survey. The balcony shall not be enclosed unless with the approved balcony screen. For an illustration of the approved balcony screen, please refer to the diagram annexed hereto as "Annexure 1".

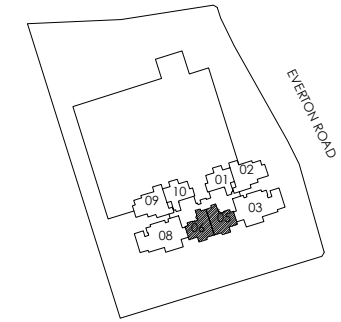
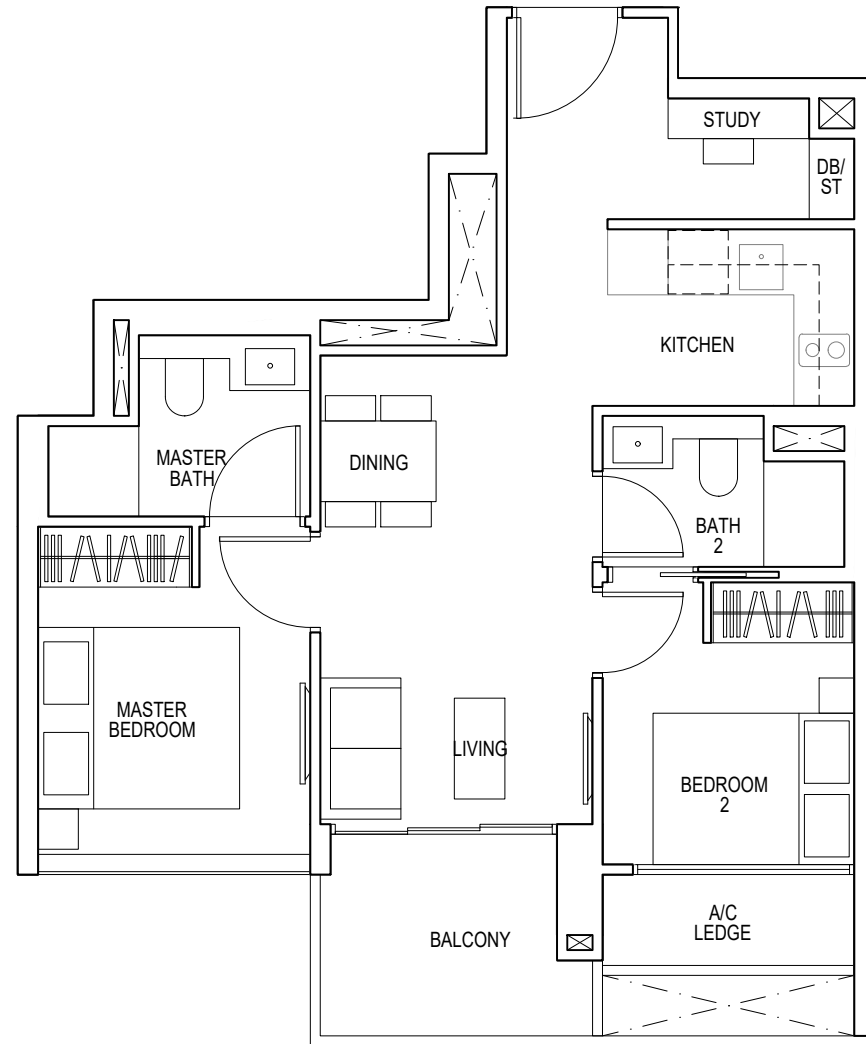
2 - BEDROOM + STUDY

TYPE B5

61 sq m / 657 sq ft

#25-05* to #35-05*

#25-06 to #35-06



N
KEY PLAN
Keyplan is not drawn to scale

*Mirror Image



Area includes air-con (A/C) ledge, balcony and strata void area where applicable. Some units are mirror images of the apartment plans shown in the brochure. Please refer to the key plan for orientation. The plans are subject to change as may be approved by relevant authorities. All floor plans are approximate measurements only and are subject to government re-survey. The balcony shall not be enclosed unless with the approved balcony screen. For an illustration of the approved balcony screen, please refer to the diagram annexed hereto as "Annexure 1".

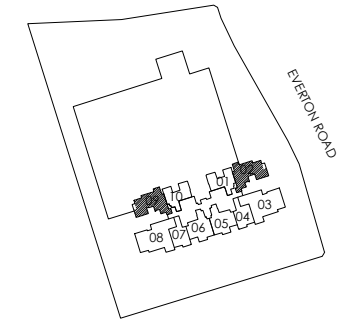
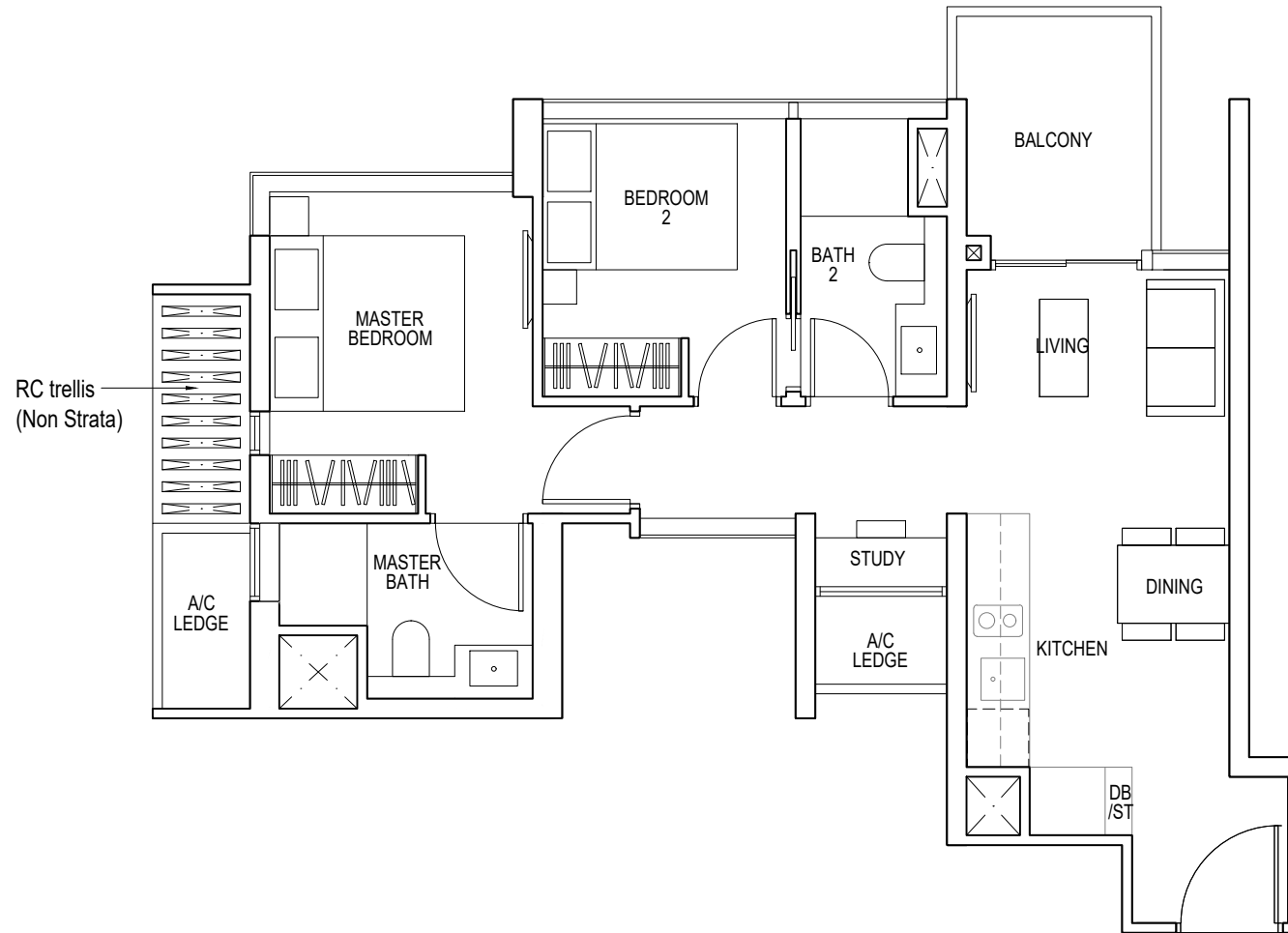
2 - BEDROOM + STUDY

TYPE B6

63 sq m / 678 sq ft

#06-02* to #12-02*

#06-09 to #12-09



N
KEY PLAN
Keyplan is not drawn to scale

*Mirror Image



Area includes air-con (A/C) ledge, balcony and strata void area where applicable. Some units are mirror images of the apartment plans shown in the brochure. Please refer to the key plan for orientation. The plans are subject to change as may be approved by relevant authorities. All floor plans are approximate measurements only and are subject to government re-survey. The balcony shall not be enclosed unless with the approved balcony screen. For an illustration of the approved balcony screen, please refer to the diagram annexed hereto as "Annexure 1".

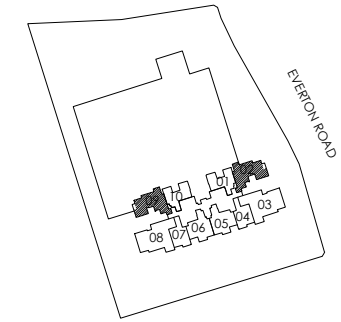
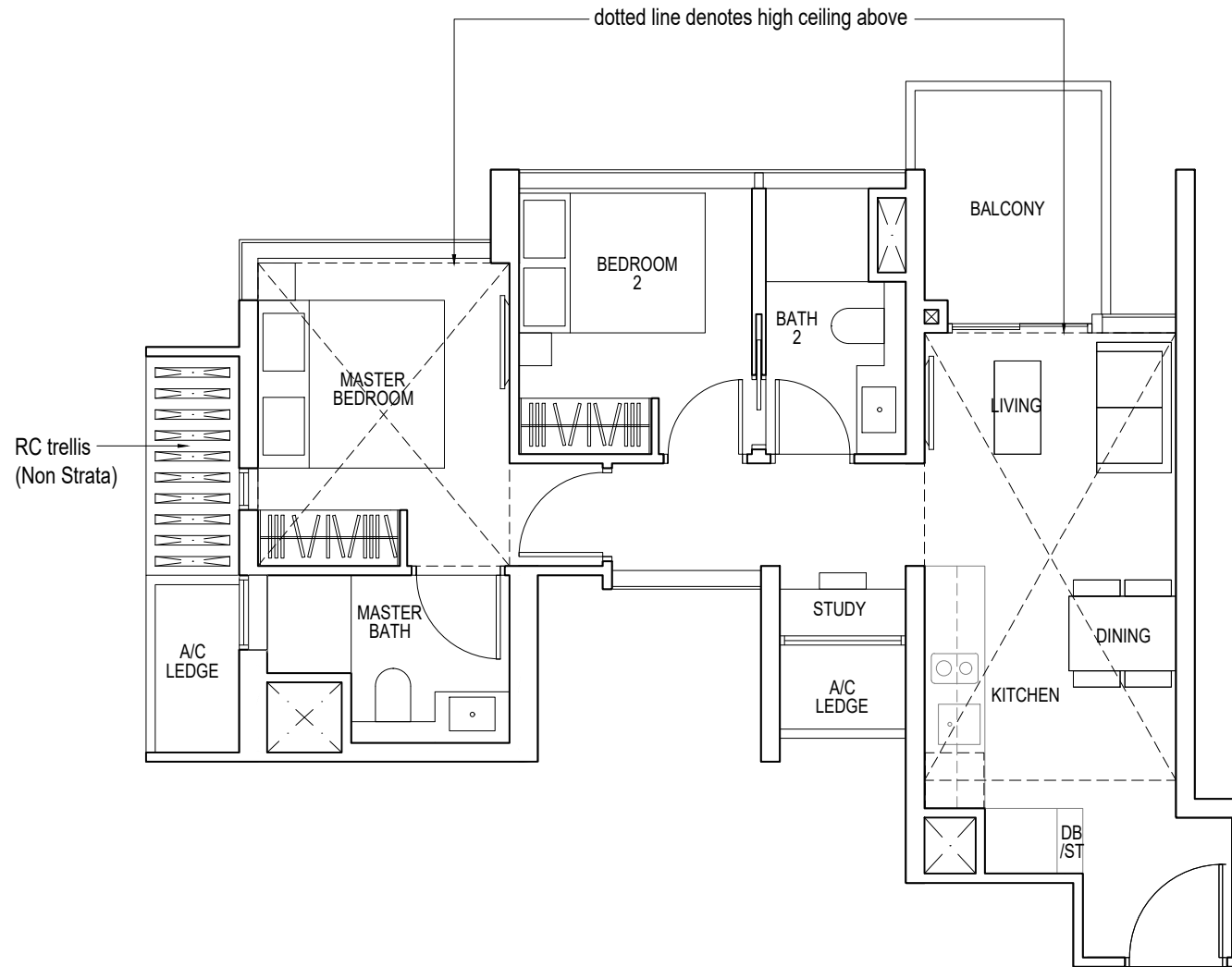
2 - BEDROOM + STUDY

TYPE B7

78 sq m / 840 sq ft

including strata void area of 15 sq m / 161 sq ft
above living and dining
Approximate 6.0 m floor-to-ceiling height at living and dining
Approximate 5.0 m floor-to-ceiling height at master bedroom

#13-02*, #13-09



N
KEY PLAN
Keyplan is not drawn to scale

*Mirror Image



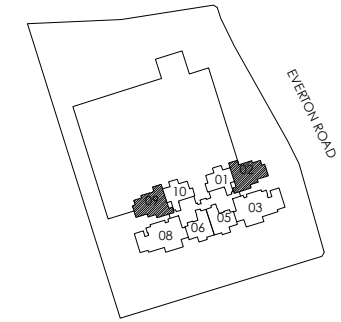
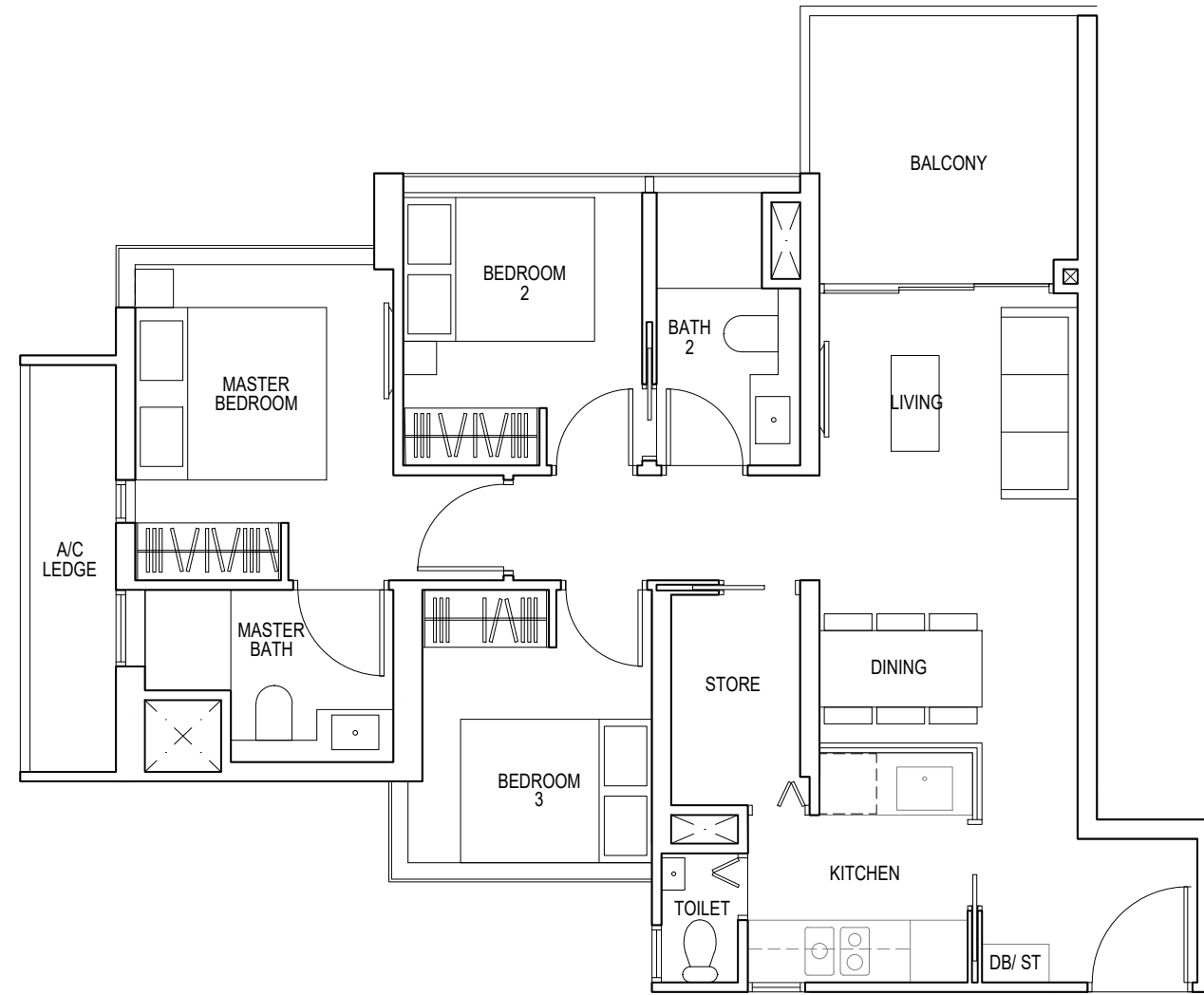
Area includes air-con (A/C) ledge, balcony and strata void area where applicable. Some units are mirror images of the apartment plans shown in the brochure. Please refer to the key plan for orientation. The plans are subject to change as may be approved by relevant authorities. All floor plans are approximate measurements only and are subject to government re-survey. The balcony shall not be enclosed unless with the approved balcony screen. For an illustration of the approved balcony screen, please refer to the diagram annexed hereto as "Annexure 1".

3 - BEDROOM

TYPE C1

85 sq m / 915 sq ft

- #15-02* to #22-02*
- #15-09 to #22-09
- #25-02* to #35-02*
- #25-09 to #35-09



N
KEY PLAN
Keyplan is not drawn to scale

*Mirror Image



Area includes air-con (A/C) ledge, balcony and strata void area where applicable. Some units are mirror images of the apartment plans shown in the brochure. Please refer to the key plan for orientation. The plans are subject to change as may be approved by relevant authorities. All floor plans are approximate measurements only and are subject to government re-survey. The balcony shall not be enclosed unless with the approved balcony screen. For an illustration of the approved balcony screen, please refer to the diagram annexed hereto as "Annexure 1".

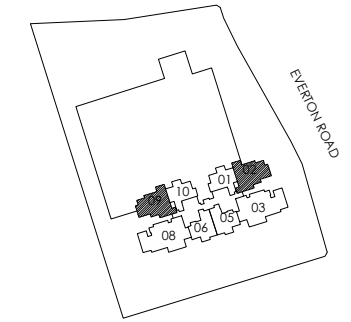
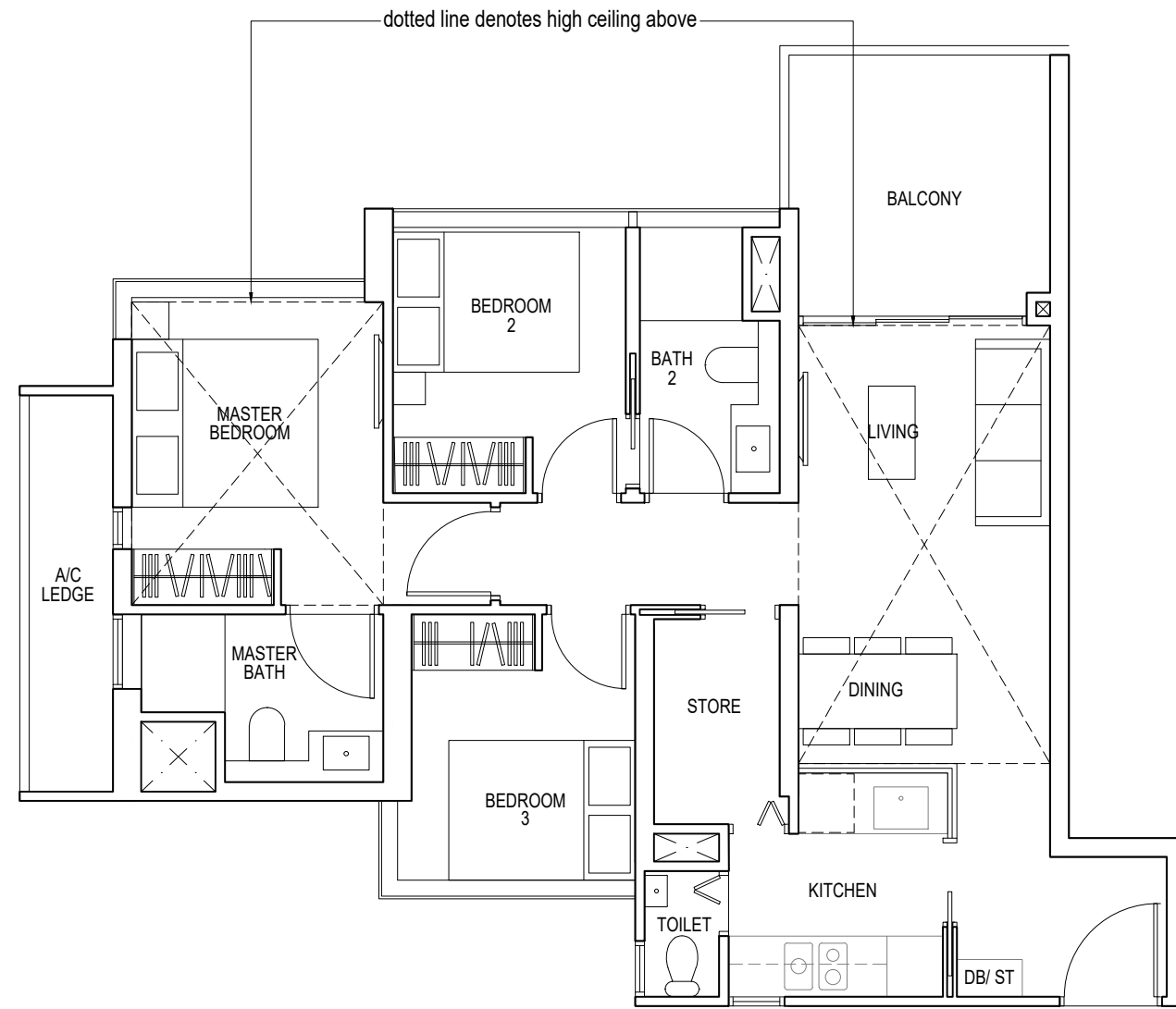
3 - BEDROOM

TYPE C2

99 sq m / 1066 sq ft

including strata void area of 14 sq m / 151 sq ft
above living and dining
Approximate 6.0 m floor to ceiling height at living
and dining
Approximate 5.0 m floor to ceiling height at master
bedroom

#23-02*, #23-09



N
KEY PLAN
Keyplan is not drawn to scale

*Mirror Image



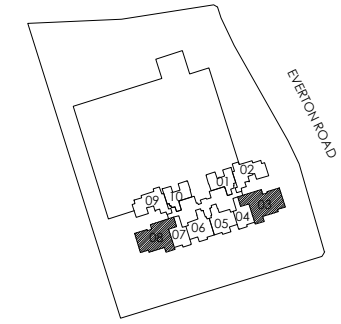
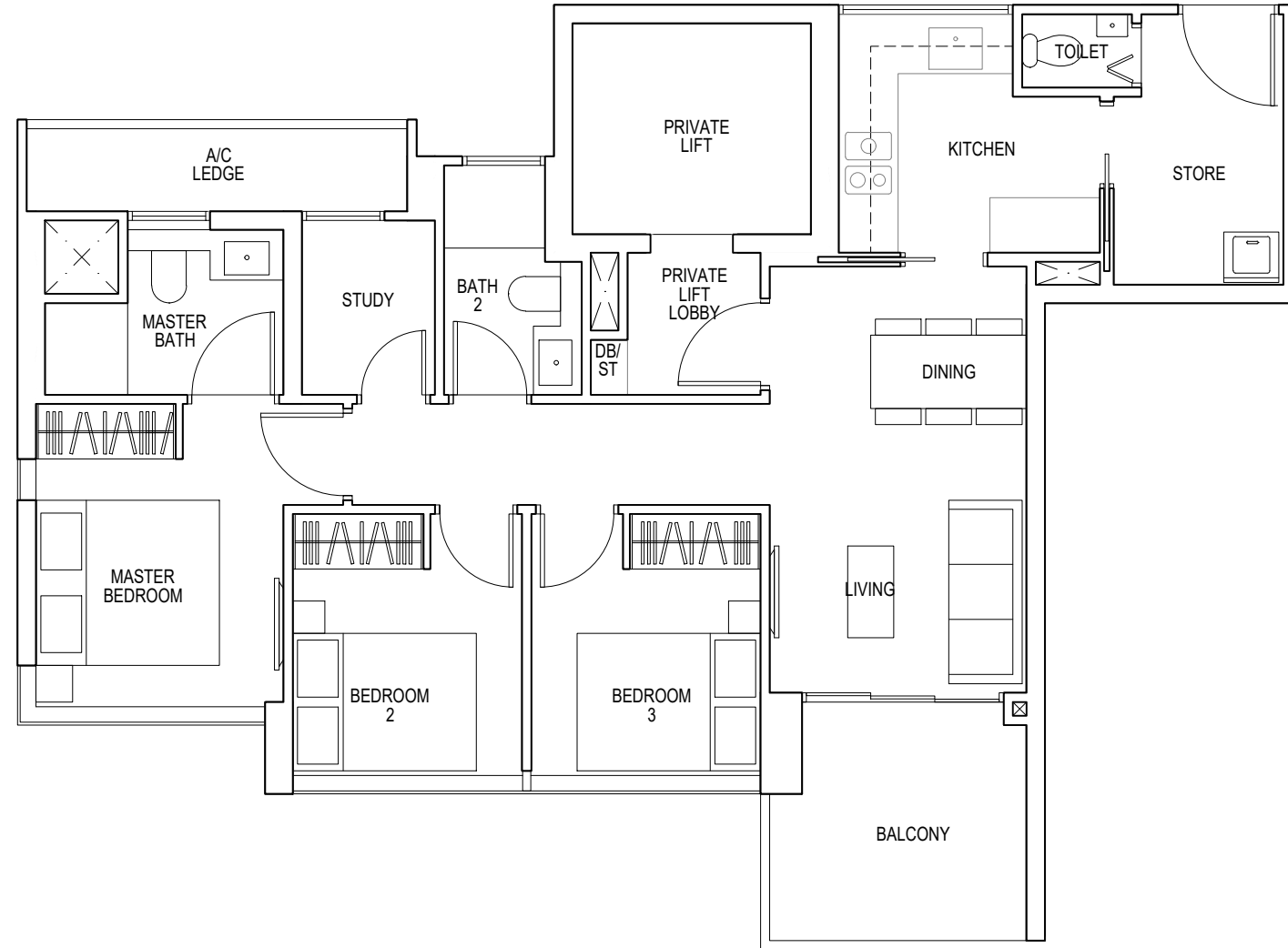
Area includes air-con (A/C) ledge, balcony and strata void area where applicable. Some units are mirror images of the apartment plans shown in the brochure. Please refer to the key plan for orientation. The plans are subject to change as may be approved by relevant authorities. All floor plans are approximate measurements only and are subject to government re-survey. The balcony shall not be enclosed unless with the approved balcony screen. For an illustration of the approved balcony screen, please refer to the diagram annexed hereto as "Annexure 1".

3 - BEDROOM + STUDY

TYPE C3

89 sq m / 958 sq ft

- #06-03* to #12-03*
- #06-08 to #12-08
- #15-03* to #22-03*
- #15-08 to #22-08



N
KEY PLAN
Keyplan is not drawn to scale

*Mirror Image



Area includes air-con (A/C) ledge, balcony and strata void area where applicable. Some units are mirror images of the apartment plans shown in the brochure. Please refer to the key plan for orientation. The plans are subject to change as may be approved by relevant authorities. All floor plans are approximate measurements only and are subject to government re-survey. The balcony shall not be enclosed unless with the approved balcony screen. For an illustration of the approved balcony screen, please refer to the diagram annexed hereto as "Annexure 1".

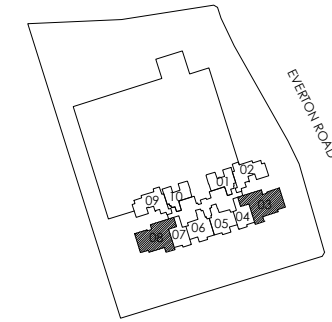
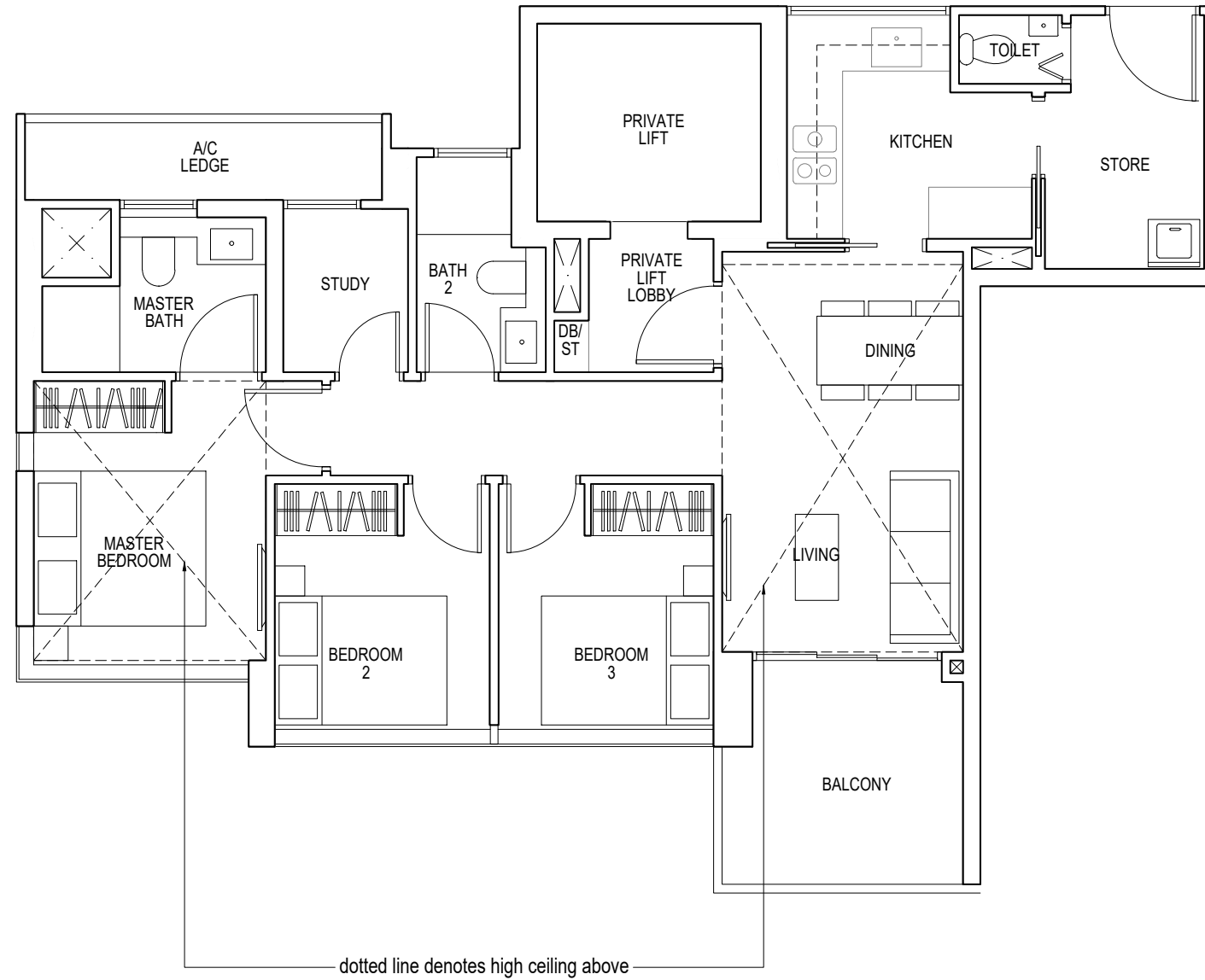
3 - BEDROOM + STUDY

TYPE C4

103 sq m / 1109 sq ft

including strata void area of 14 sq m / 151 sq ft
above living and dining
Approximate 6.0 m floor-to-ceiling height at living
and dining
Approximate 5.0 m floor-to-ceiling height at master
bedroom

#13-03*, #13-08, #23-03*, #23-08



N
KEY PLAN
Keyplan is not drawn to scale

*Mirror Image



Area includes air-con (A/C) ledge, balcony and strata void area where applicable. Some units are mirror images of the apartment plans shown in the brochure. Please refer to the key plan for orientation. The plans are subject to change as may be approved by relevant authorities. All floor plans are approximate measurements only and are subject to government re-survey. The balcony shall not be enclosed unless with the approved balcony screen. For an illustration of the approved balcony screen, please refer to the diagram annexed hereto as "Annexure 1".

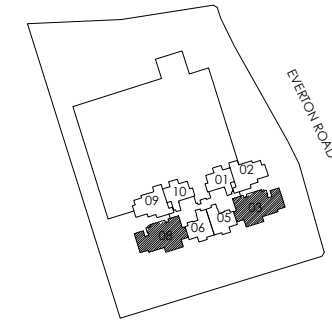
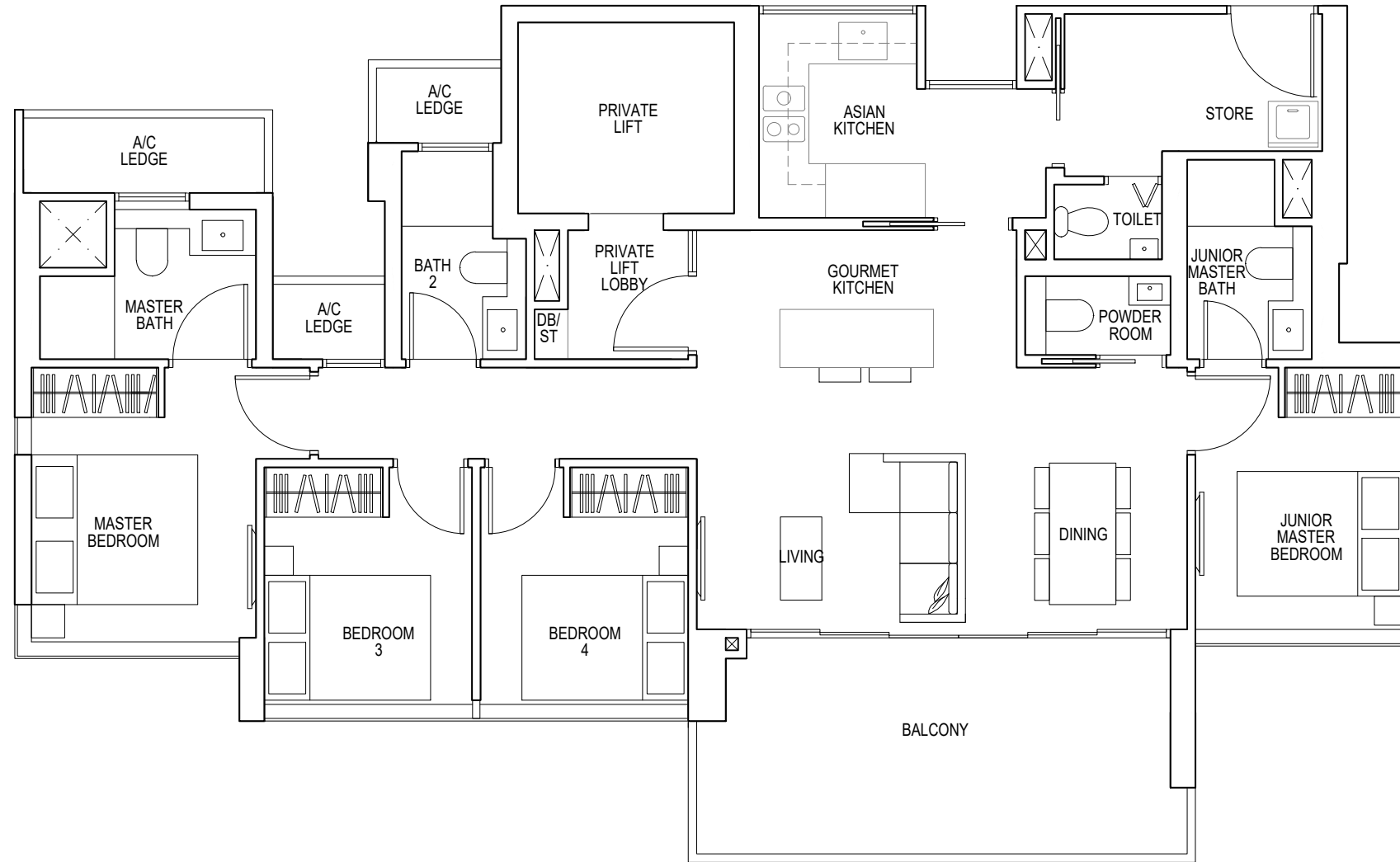
4 - BEDROOM

TYPE D1

125 sq m / 1346 sq ft

#25-03* to #35-03*

#25-08 to #35-08



N
KEY PLAN
Keyplan is not drawn to scale

*Mirror Image



Area includes air-con (A/C) ledge, balcony and strata void area where applicable. Some units are mirror images of the apartment plans shown in the brochure. Please refer to the key plan for orientation. The plans are subject to change as may be approved by relevant authorities. All floor plans are approximate measurements only and are subject to government re-survey. The balcony shall not be enclosed unless with the approved balcony screen. For an illustration of the approved balcony screen, please refer to the diagram annexed hereto as "Annexure 1".

5 - BEDROOM

TYPE PH1

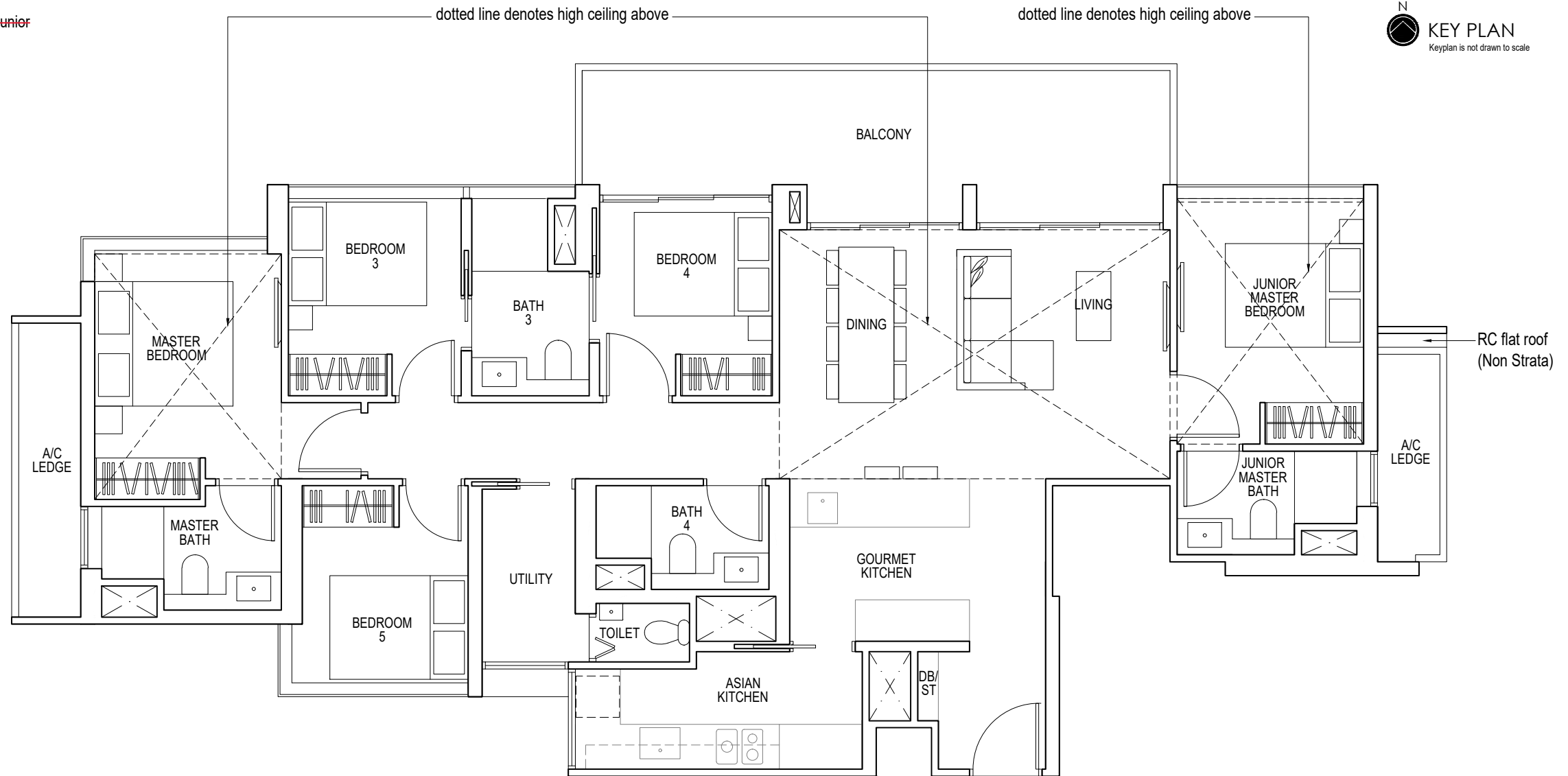
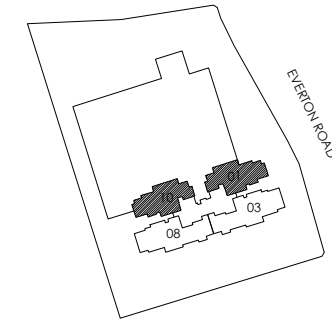
169 sq m / 1819 sq ft

including strata void area of 22 sq m / 237 sq ft
above living and dining

Approximate 6.0 m floor-to-ceiling height at living
and dining

Approximate 5.0 m floor-to-ceiling height at junior
master and master bedroom

#36-01*, #36-10



*Mirror Image



Area includes air-con (A/C) ledge, balcony and strata void area where applicable. Some units are mirror images of the apartment plans shown in the brochure. Please refer to the key plan for orientation. The plans are subject to change as may be approved by relevant authorities. All floor plans are approximate measurements only and are subject to government re-survey. The balcony shall not be enclosed unless with the approved balcony screen. For an illustration of the approved balcony screen, please refer to the diagram annexed hereto as "Annexure 1".

6 - BEDROOM

TYPE PH2

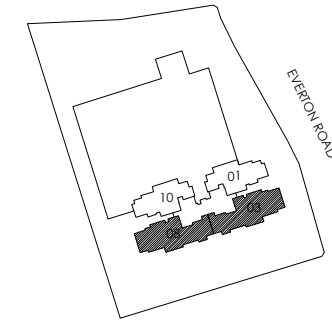
207 sq m / 2228 sq ft

including strata void area of 25 sq m / 269 sq ft
above living and dining

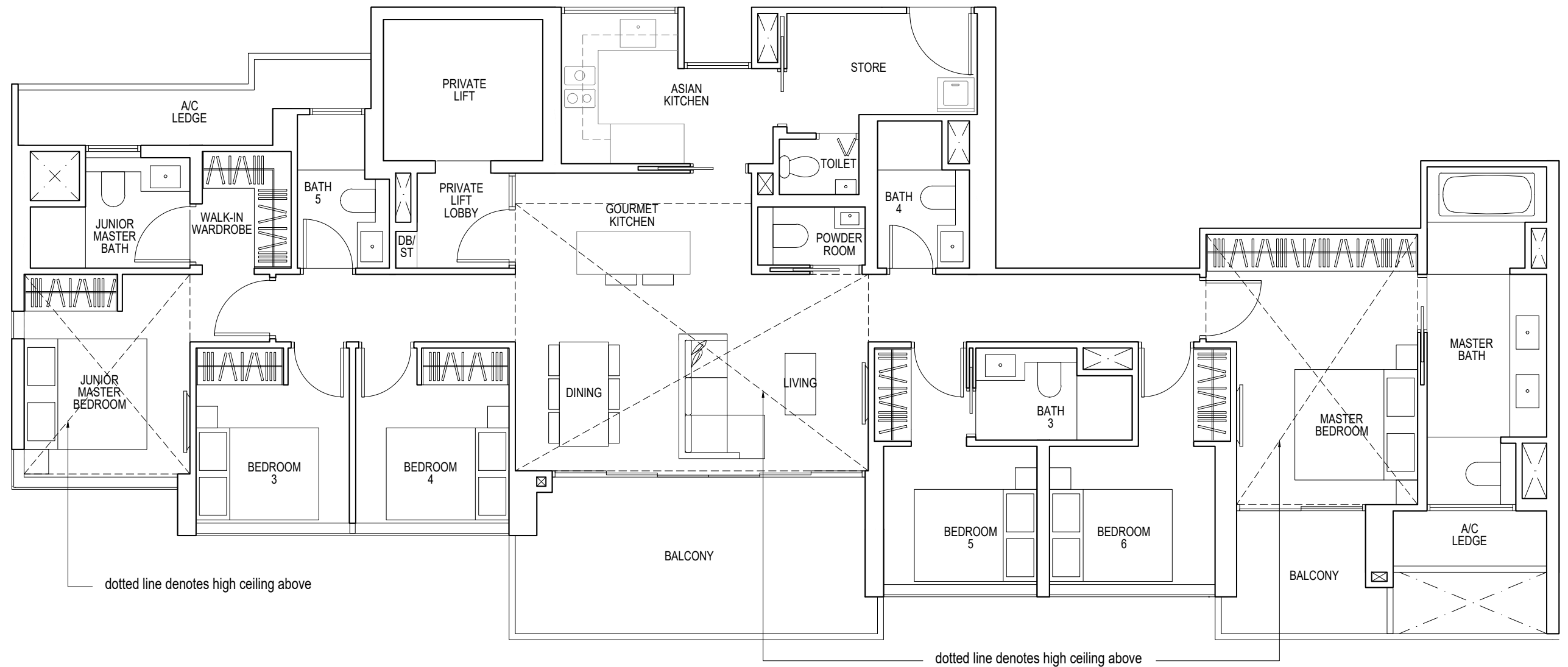
Approximate 6.0 m floor-to-ceiling height at living
and dining

Approximate 5.0 m floor-to-ceiling height at junior
master and master bedroom

#36-03*, #36-08



N
KEY PLAN
Keyplan is not drawn to scale



*Mirror Image



Area includes air-con (A/C) ledge, balcony and strata void area where applicable. Some units are mirror images of the apartment plans shown in the brochure. Please refer to the key plan for orientation. The plans are subject to change as may be approved by relevant authorities. All floor plans are approximate measurements only and are subject to government re-survey. The balcony shall not be enclosed unless with the approved balcony screen. For an illustration of the approved balcony screen, please refer to the diagram annexed hereto as "Annexure 1".