

TYPE A1

#03-05, #04-05

#03-15, #04-15(mirror)

50 sq m / 538 sq ft

TYPE A1-R

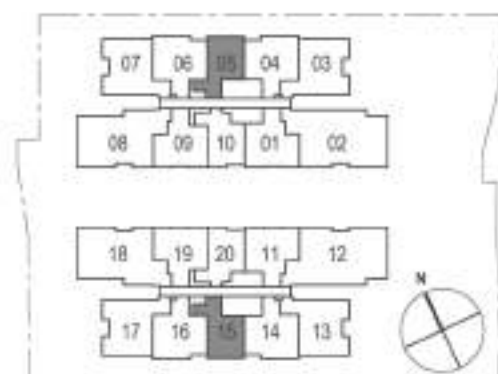
#05-05

#05-15 (mirror)

64 sq m / 689 sq ft

includes 14 sqm / 151 sq ft void area
(high ceiling) above living & balcony

1 BEDROOM + STUDY



TYPE A2

#03-20, #04-20

#03-10, #04-10 (mirror)

50 sq m / 538 sq ft

TYPE A2-R

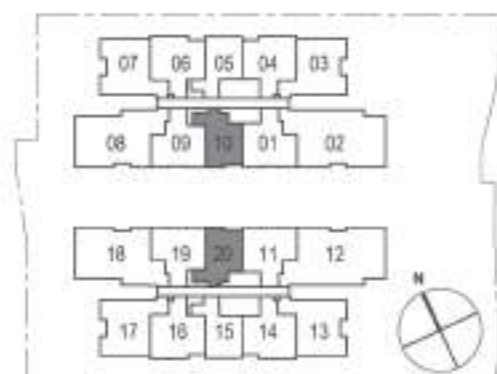
#05-20

#05-10 (mirror)

54 sq m / 581 sq ft

includes 4 sqm / 43 sq ft void area
(high ceiling) above balcony

1 BEDROOM + STUDY



2 BEDROOM

TYPE B1

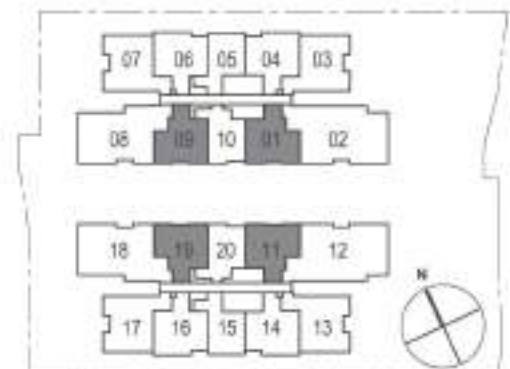
#03-01, #04-01, #03-10, #04-10
#03-09, #04-09 (mirror)
#03-11, #04-11 (mirror)
58 sq m / 624 sq ft

TYPE B1-R1

#05-09 (mirror)
#05-10
70 sq m / 753 sq ft
includes 12 sqm / 129 sq ft void area
(high ceiling) above master bedroom

TYPE B1-R2

#05-01
#05-11 (mirror)
73 sq m / 786 sq ft
includes 15 sqm / 161 sq ft void area
(high ceiling) above master bedroom & balcony



Floor areas are inclusive of PES, balconies, a/o ledges and voids. Floor areas are of approximate measurement and subject to final survey.
The plans are subject to changes as required or approved by relevant authorities.
The balconies shall not be enclosed unless with approved balcony screens.

TYPE B2

#03-04, #04-04 (mirror)
 #03-16, #04-16 (mirror)
 #03-06, #04-06, #03-14, #04-14
 65 sq m / 700 sq ft

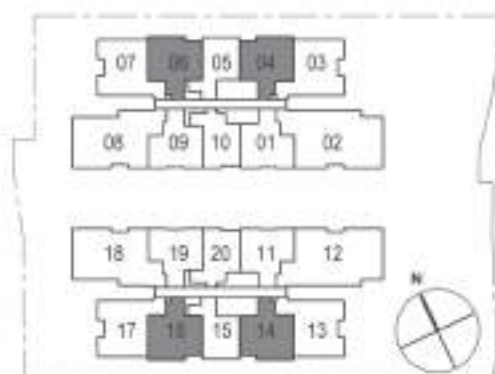
TYPE B2-R1

#05-08
 #05-16 (mirror)
 84 sq m / 904 sq ft
 includes 19 sqm / 205 sq ft void area
 (high ceiling) above master bedroom & balcony

TYPE B2-R2

#05-04 (mirror)
 #05-14
 83 sq m / 893 sq ft
 includes 18 sqm / 194 sq ft void area
 (high ceiling) above living & balcony

2 BEDROOM PREMIUM

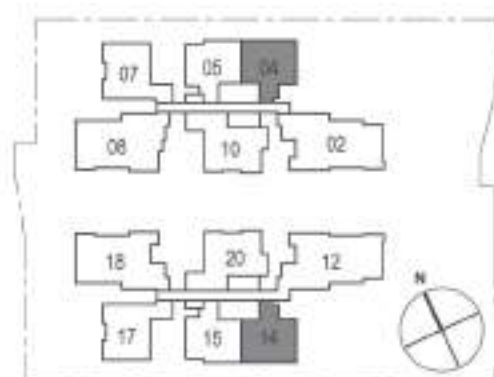


Floor areas are inclusive of PES, balconies, a/o ledges and voids. Floor areas are of approximate measurement and subject to final survey.
 The plans are subject to changes as required or approved by relevant authorities.
 The balconies shall not be enclosed unless with approved balcony screens.

TYPE B2a
#02-04
#02-14 (mirror)
65 sq m / 700 sq ft

TYPE B2a-G
#01-04
#01-14 (mirror)
65 sq m / 700 sq ft

2 BEDROOM PREMIUM



Floor areas are inclusive of PES, balconies, a/o ledges and voids. Floor areas are of approximate measurement and subject to final survey.
The plans are subject to changes as required or approved by relevant authorities.
The balconies shall not be enclosed unless with approved balcony screens.

TYPE B3

#03-07, #04-07, #03-13, #04-13

#03-03, #04-03 (mirror)

#03-17, #04-17 (mirror)

68 sq m / 732 sq ft

TYPE B3-R

#05-07, #05-13

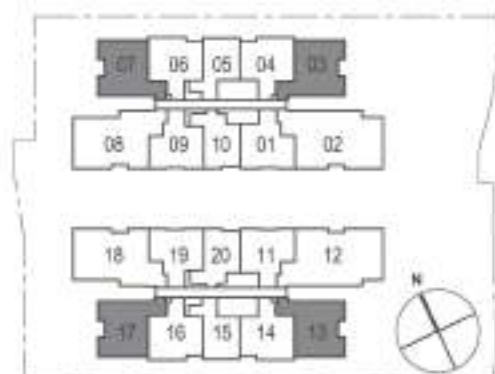
#05-03, #05-17 (mirror)

93 sq m / 1001 sq ft

includes 25 sqm / 269 sq ft void area

(high ceiling) above bedroom 1, living & balcony

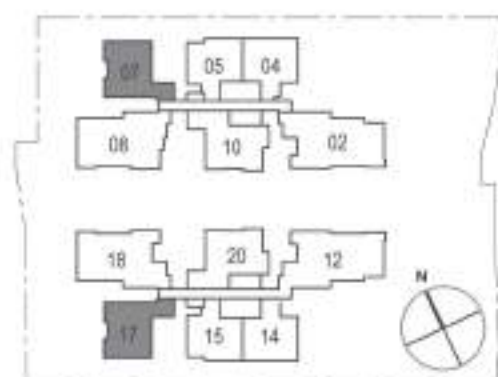
2 BEDROOM PREMIUM



TYPE B3a
#02-07
#02-17 (mirror)
68 sq m / 732 sq ft

TYPE B3a-G
#01-07
#01-17 (mirror)
68 sq m / 732 sq ft

2 BEDROOM PREMIUM



Floor areas are inclusive of PES, balconies, a/o ledges and voids. Floor areas are of approximate measurement and subject to final survey.
The plans are subject to changes as required or approved by relevant authorities.
The balconies shall not be enclosed unless with approved balcony screens.

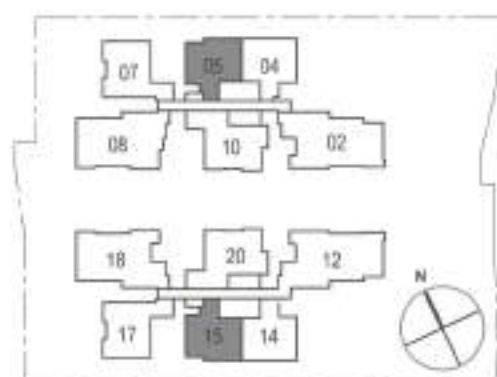
TYPE B4

#02-05
#02-15 (mirror)
64 sq m / 689 sq ft

TYPE B4-G

#01-05
#01-15 (mirror)
64 sq m / 689 sq ft

2 BEDROOM PREMIUM



Floor areas are inclusive of PES, balconies, a/o ledges and voids. Floor areas are of approximate measurement and subject to final survey.
The plans are subject to changes as required or approved by relevant authorities.
The balconies shall not be enclosed unless with approved balcony screens.

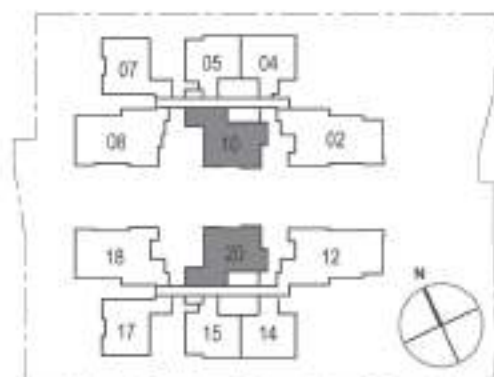
TYPE B5

#02-20
#02-10 (mirror)
78 sq m / 818 sq ft

TYPE B5-G

#01-20
#01-10 (mirror)
78 sq m / 818 sq ft

2 BEDROOM PREMIUM



Floor areas are inclusive of PDS, balconies, a/o ledges and voids. Floor areas are of approximate measurement and subject to final survey.
The plans are subject to changes as required or approved by relevant authorities.
The balconies shall not be enclosed unless with approved balcony screens.

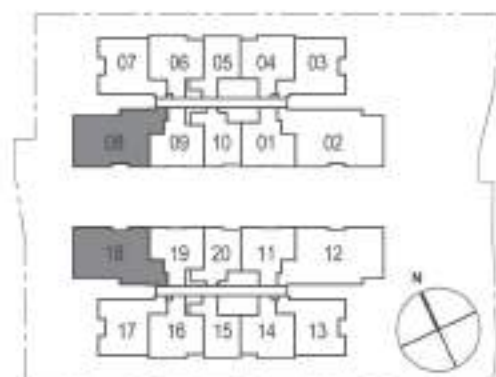
TYPE C1

#03-18, #04-18
#03-08, #04-08 (mirror)
100 sq m / 1076 sq ft

TYPE C1-R

#05-18
#05-08 (mirror)
129 sq m / 1389 sq ft
includes 29 sqm / 312 sq ft void area
(high ceiling) above master bedroom,
living & balcony

3 BEDROOM



TYPE C1a

#02-18

#02-08 (mirror)

97 sq m / 1044 sq ft

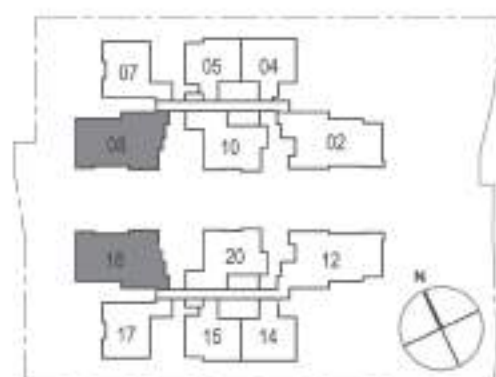
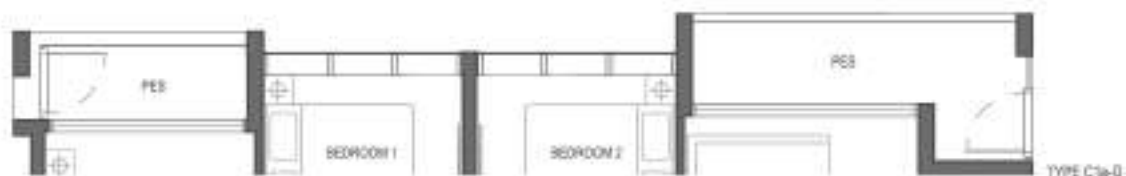
3 BEDROOM

TYPE C1a-G

#01-18

#01-08 (mirror)

97 sq m / 1044 sq ft



Floor areas are inclusive of PEB, balconies, a/o ledges and voids. Floor areas are of approximate measurement and subject to final survey.
 The plans are subject to changes as required or approved by relevant authorities.
 The balconies shall not be enclosed unless with approved balcony screens.

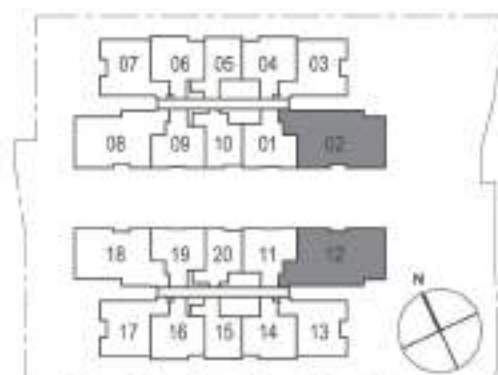
TYPE C2

#03-12, #04-12
#03-02, #04-02 (mirror)
117 sq m / 1259 sq ft

TYPE C2-R

#05-12
#05-02 (mirror)
156 sq m / 1679 sq ft
includes 39 sqm / 420 sq ft void area
(high ceiling) above living/dining,
bedroom 1 & balconies

3 BEDROOM PREMIUM



Floor areas are inclusive of PES, balconies, a/o ledges and voids. Floor areas are of approximate measurement and subject to final survey.
The plans are subject to changes as required or approved by relevant authorities.
The balconies shall not be enclosed unless with approved balcony screens.

TYPE C2a

#02-12

#02-02 (mirror)

114 sq m / 1227 sq ft

TYPE C2a-G

#01-12

#01-02 (mirror)

114 sq m / 1227 sq ft

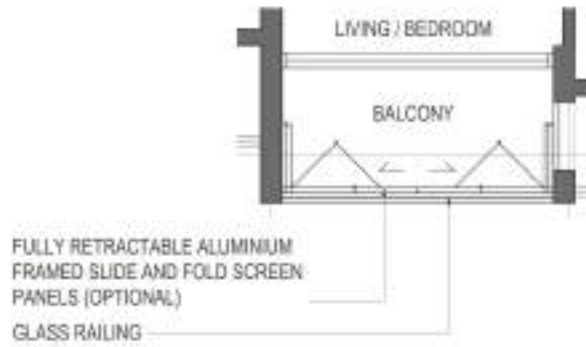
3 BEDROOM PREMIUM



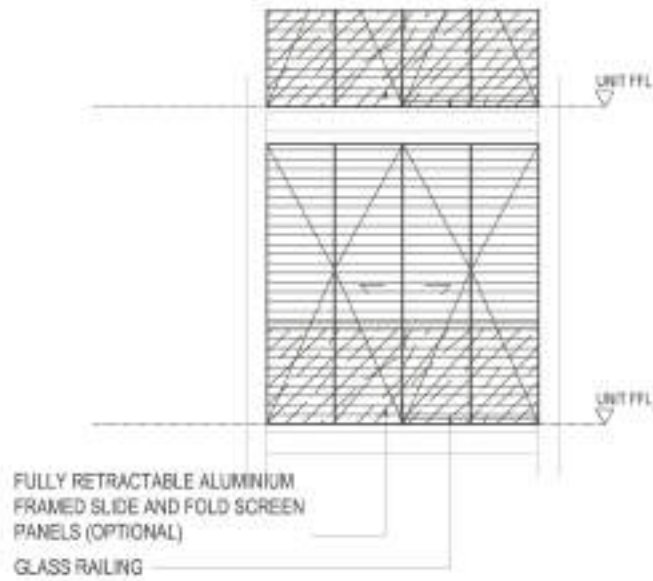
Floor areas are inclusive of PES, balconies, a/o ledges and voids. Floor areas are of approximate measurement and subject to final survey.
The plans are subject to changes as required or approved by relevant authorities.
The balconies shall not be enclosed unless with approved balcony screens.

BALCONY SCREEN

PLAN



ELEVATION



SECTION

