

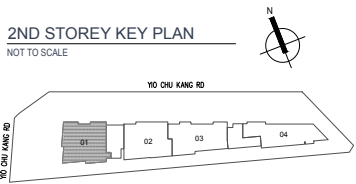
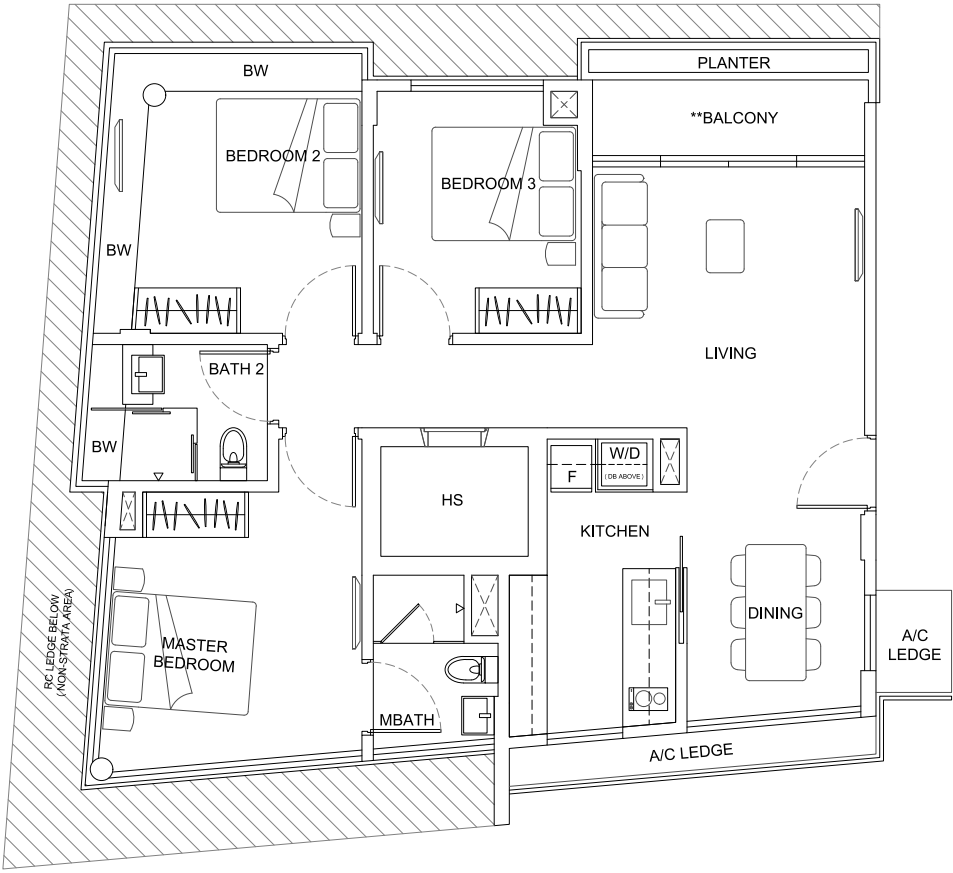
PARKWOOD

RESIDENCES

Type A1 - 3 Bedroom

#02-01

100 sqm / 1076 sqft



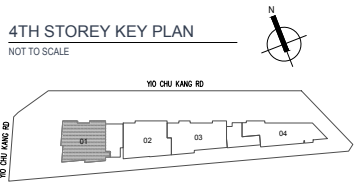
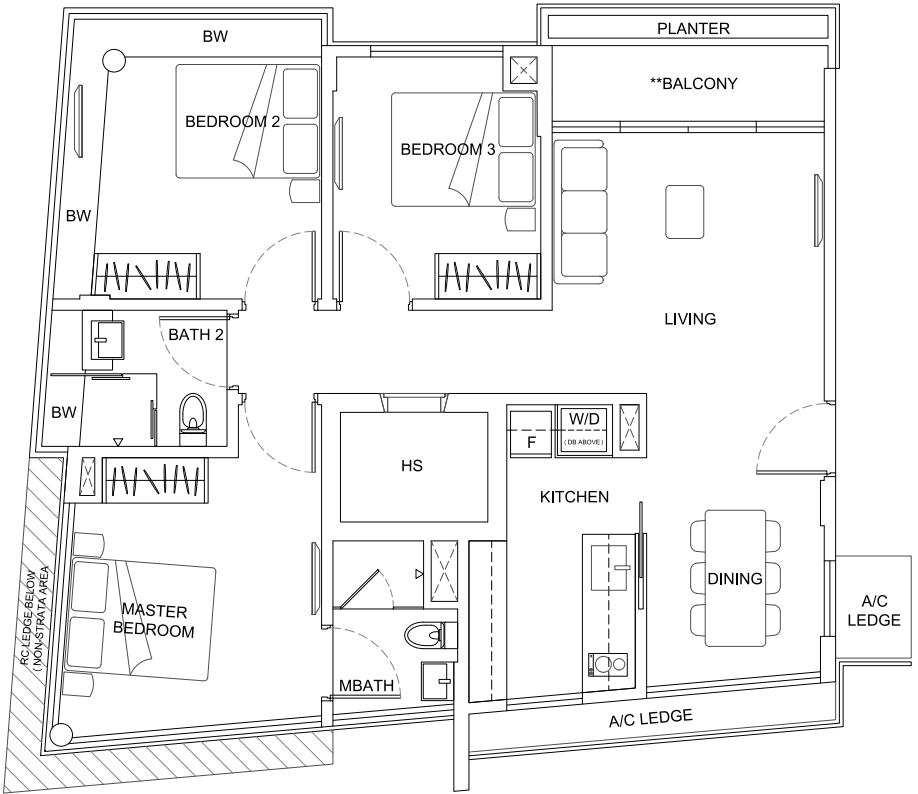
**The balcony shall not be enclosed unless with the URA approved balcony screen. For an illustration of the approved balcony screen, please refer to page 57 of this brochure.

NOTE:
Areas include A/C ledge, balcony, bay window, planter, private roof terrace and strata void area (where applicable). Orientations and facings will differ depending on the unit you are purchasing, please refer to the key plan. Plans are not drawn to scale and subject to change as may be required or approved by the relevant authorities. All areas are estimates only and are subject to final survey.

Type A1 - 3 Bedroom

#04-01

100 sqm / 1076 sqft



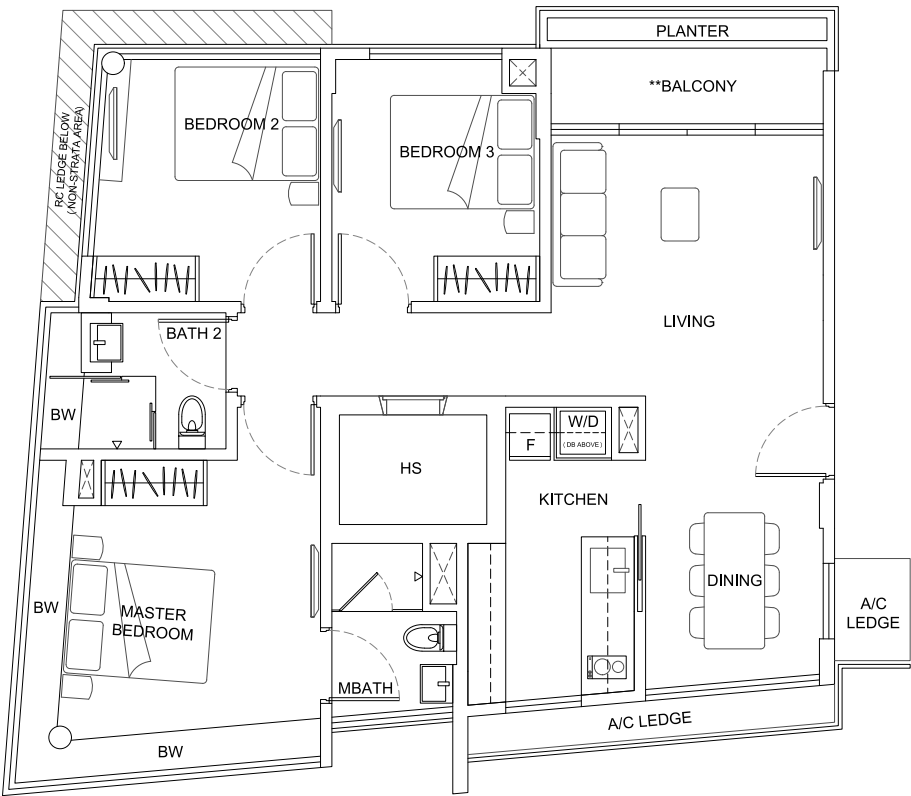
**The balcony shall not be enclosed unless with the URA approved balcony screen. For an illustration of the approved balcony screen, please refer to page 57 of this brochure.

NOTE:
Areas include A/C ledge, balcony, bay window, planter, private roof terrace and strata void area (where applicable). Orientations and facings will differ depending on the unit you are purchasing, please refer to the key plan. Plans are not drawn to scale and subject to change as may be required or approved by the relevant authorities. All areas are estimates only and are subject to final survey.

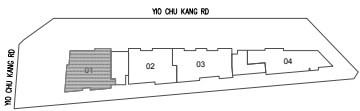
Type A2 - 3 Bedroom

#03-01

100 sqm / 1076 sqft



3RD STOREY KEY PLAN
NOT TO SCALE



**The balcony shall not be enclosed unless with the URA approved balcony screen. For an illustration of the approved balcony screen, please refer to page 57 of this brochure.

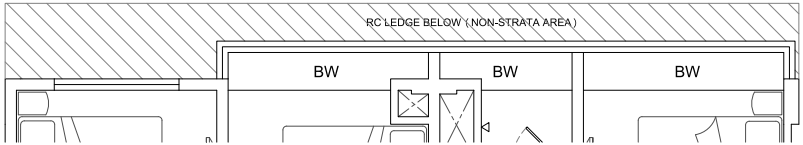
NOTE:
Areas include A/C ledge, balcony, bay window, planter, private roof terrace and strata void area (where applicable). Orientations and facings will differ depending on the unit you are purchasing, please refer to the key plan. Plans are not drawn to scale and subject to change as may be required or approved by the relevant authorities. All areas are estimates only and are subject to final survey.

Type B1 - 3 Bedroom

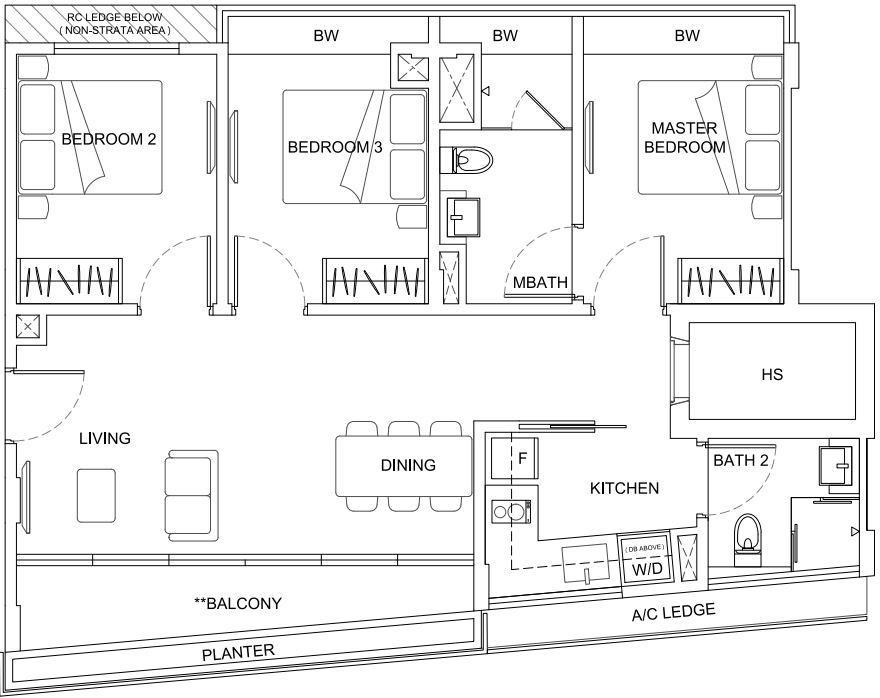
#02-02, #04-02

92 sqm / 990 sqft

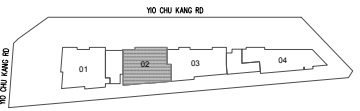
#02-02



#04-02



2ND/4TH STOREY KEY PLAN
NOT TO SCALE



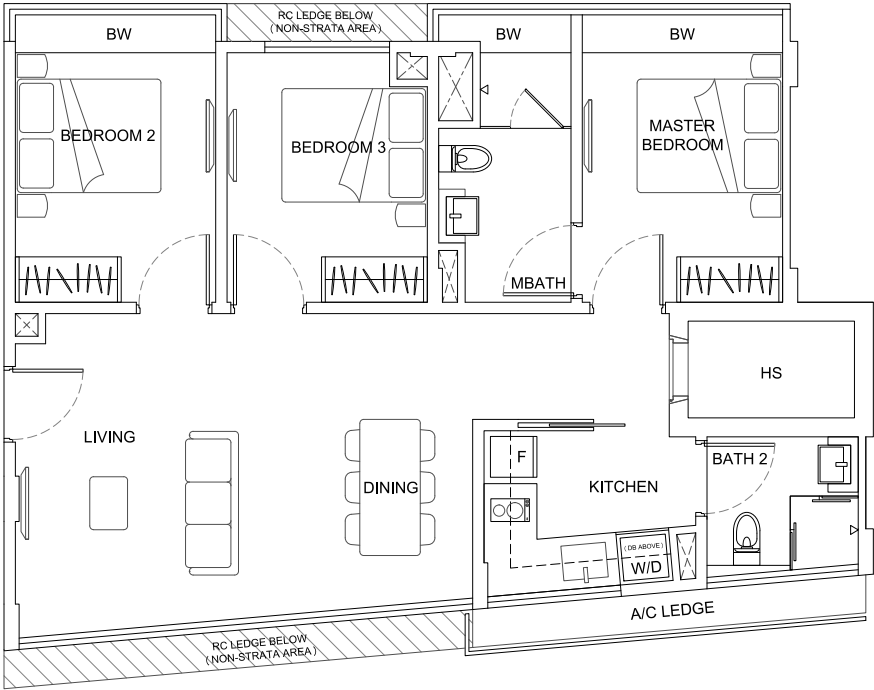
**The balcony shall not be enclosed unless with the URA approved balcony screen. For an illustration of the approved balcony screen, please refer to page 57 of this brochure.

NOTE:
Areas include A/C ledge, balcony, bay window, planter, private roof terrace and strata void area (where applicable). Orientations and facings will differ depending on the unit you are purchasing, please refer to the key plan. Plans are not drawn to scale and subject to change as may be required or approved by the relevant authorities. All areas are estimates only and are subject to final survey.

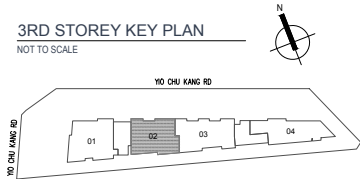
Type B2 - 3 Bedroom

#03-02

89 sqm / 958 sqft



3RD STOREY KEY PLAN
NOT TO SCALE



**The balcony shall not be enclosed unless with the URA approved balcony screen. For an illustration of the approved balcony screen, please refer to page 57 of this brochure.

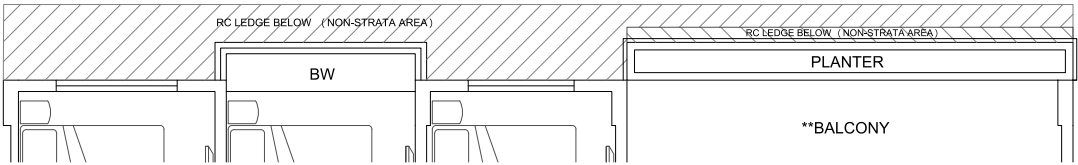
NOTE:
Areas include A/C ledge, balcony, bay window, planter, private roof terrace and strata void area (where applicable). Orientations and facings will differ depending on the unit you are purchasing, please refer to the key plan. Plans are not drawn to scale and subject to change as may be required or approved by the relevant authorities. All areas are estimates only and are subject to final survey.

Type C1 - 3 Bedroom

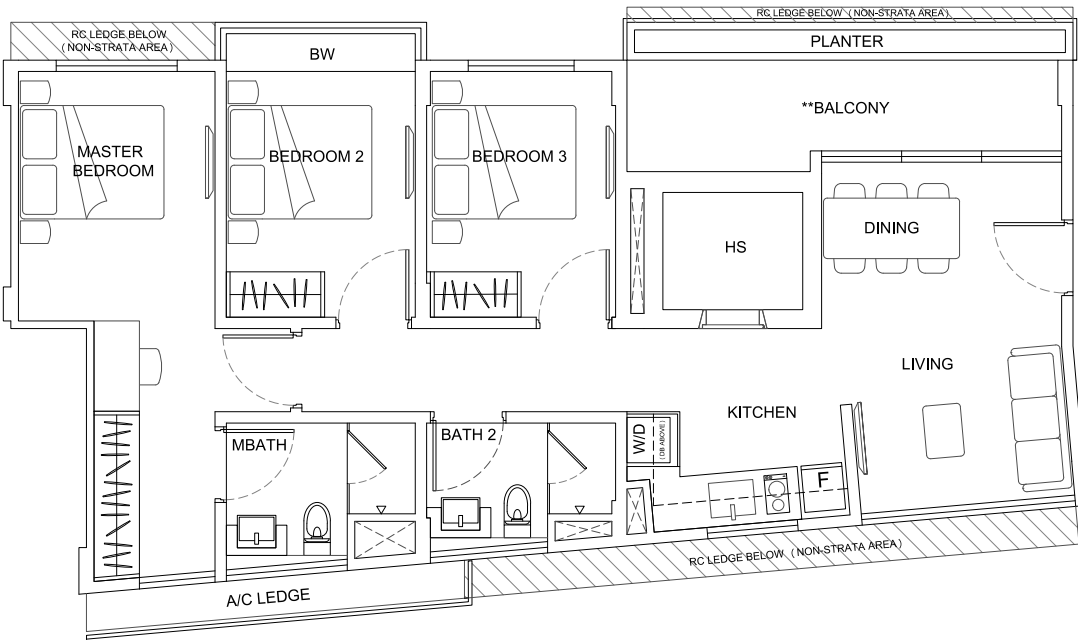
#02-03, #04-03

95 sqm / 1023 sqft

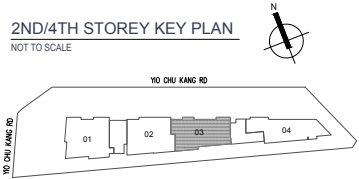
#02-03



#04-03



2ND/4TH STOREY KEY PLAN
NOT TO SCALE



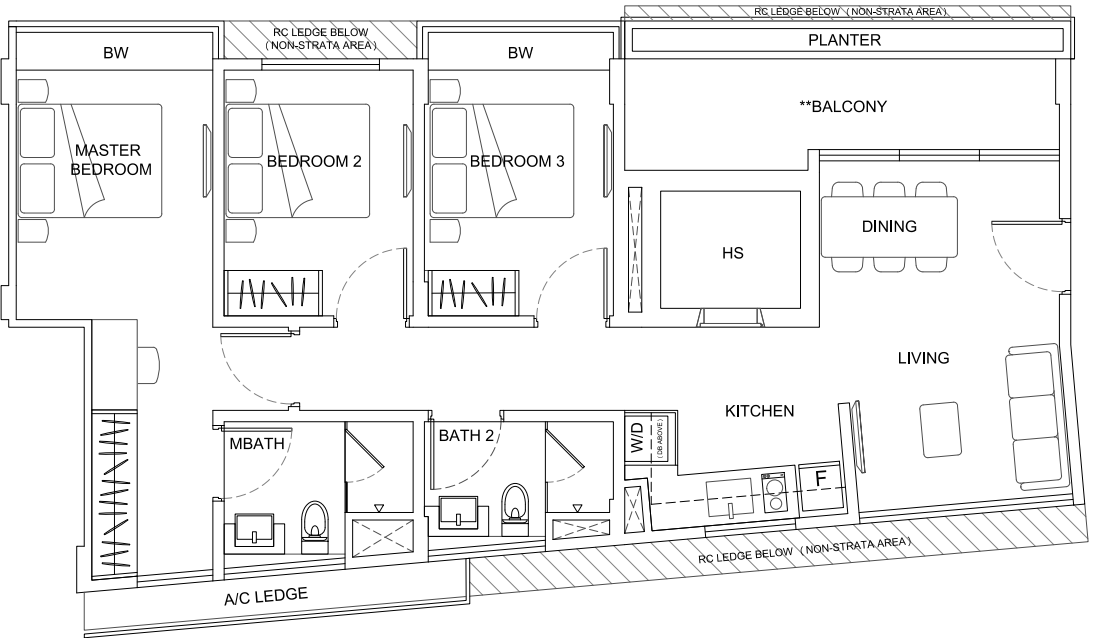
**The balcony shall not be enclosed unless with the URA approved balcony screen. For an illustration of the approved balcony screen, please refer to page 57 of this brochure.

NOTE:
Areas include A/C ledge, balcony, bay window, planter, private roof terrace and strata void area (where applicable). Orientations and facings will differ depending on the unit you are purchasing, please refer to the key plan. Plans are not drawn to scale and subject to change as may be required or approved by the relevant authorities. All areas are estimates only and are subject to final survey.

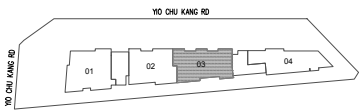
Type C2A - 3 Bedroom

#03-03

96 sqm / 1033 sqft



3RD STOREY KEY PLAN
NOT TO SCALE



* Ceiling height differs from #03-03. Please refer to ceiling height schedule on page 56 of this brochure .

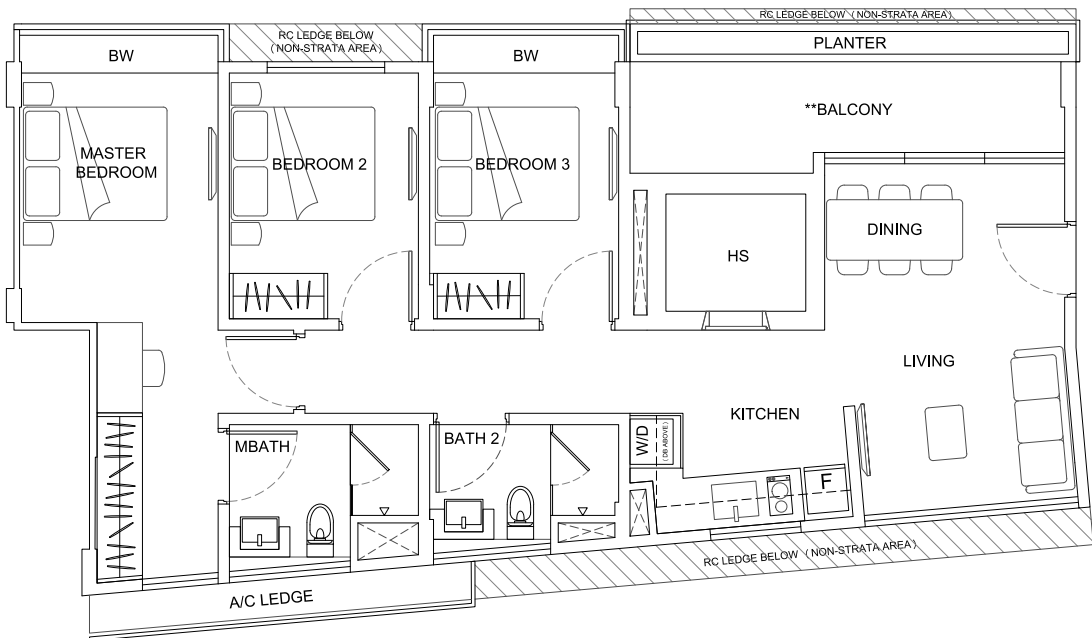
**The balcony shall not be enclosed unless with the URA approved balcony screen. For an illustration of the approved balcony screen, please refer to page 57 of this brochure.

NOTE:
Areas include A/C ledge, balcony, bay window, planter, private roof terrace and strata void area (where applicable). Orientations and facings will differ depending on the unit you are purchasing, please refer to the key plan. Plans are not drawn to scale and subject to change as may be required or approved by the relevant authorities. All areas are estimates only and are subject to final survey.

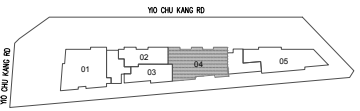
Type C2B - 3 Bedroom

#05-04

97 sqm / 1044 sqft



5TH STOREY KEY PLAN
NOT TO SCALE

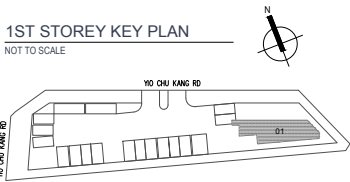
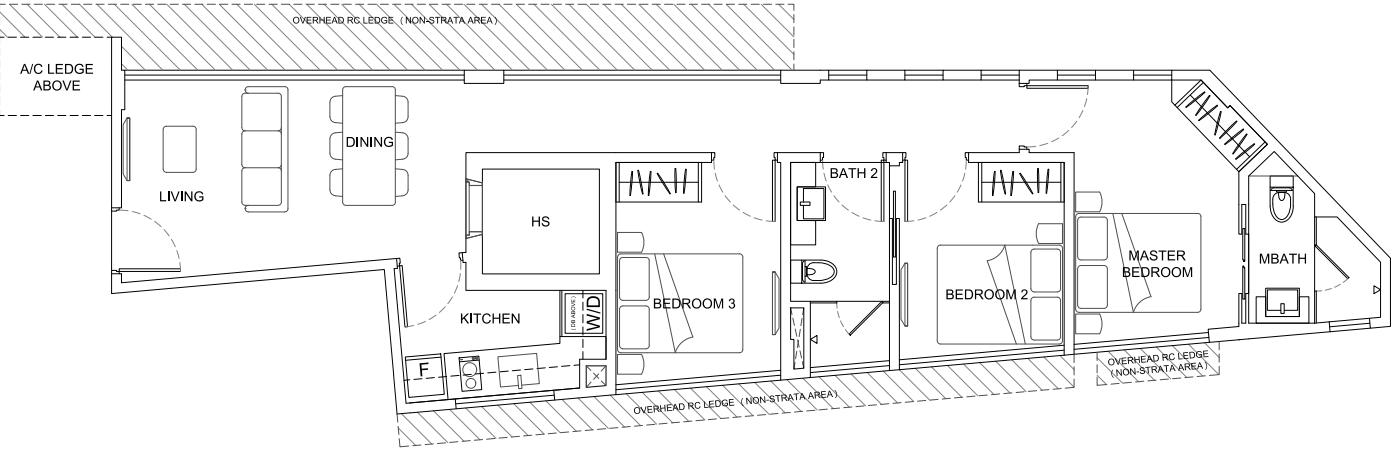


**The balcony shall not be enclosed unless with the URA approved balcony screen. For an illustration of the approved balcony screen, please refer to page 57 of this brochure.

NOTE:
Areas include A/C ledge, balcony, bay window, planter, private roof terrace and strata void area (where applicable). Orientations and facings will differ depending on the unit you are purchasing, please refer to the key plan. Plans are not drawn to scale and subject to change as may be required or approved by the relevant authorities. All areas are estimates only and are subject to final survey.

Type D1 - 3 Bedroom

#01-01
80 sqm / 861 sqft



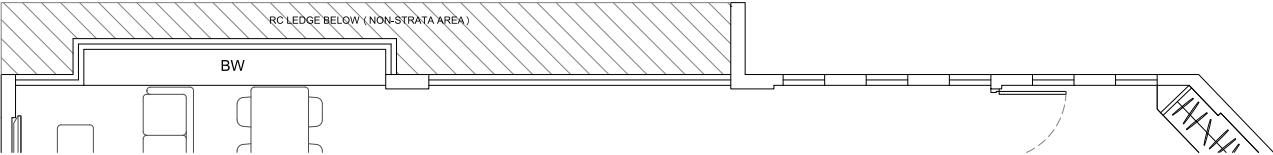
**The balcony shall not be enclosed unless with the URA approved balcony screen. For an illustration of the approved balcony screen, please refer to page 57 of this brochure.

NOTE:
Areas include A/C ledge, balcony, bay window, planter, private roof terrace and strata void area (where applicable). Orientations and facings will differ depending on the unit you are purchasing, please refer to the key plan. Plans are not drawn to scale and subject to change as may be required or approved by the relevant authorities. All areas are estimates only and are subject to final survey.

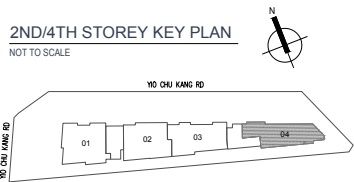
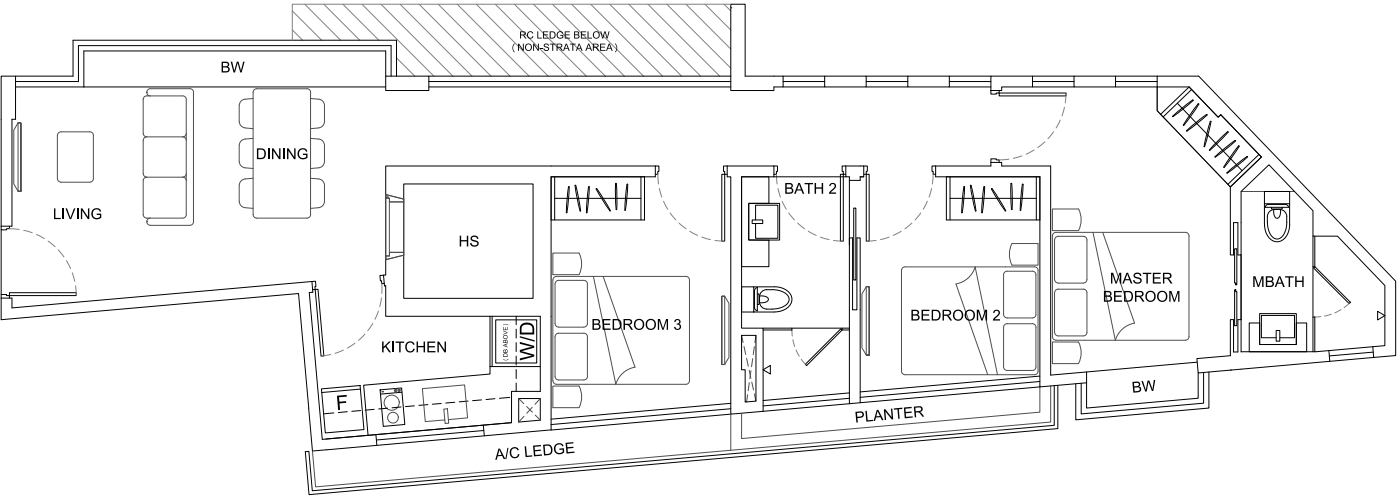
Type D2 - 3 Bedroom

#02-04, #04-04
87 sqm / 936 sqft

#02-04



#04-04



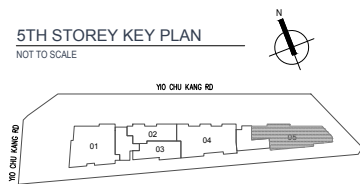
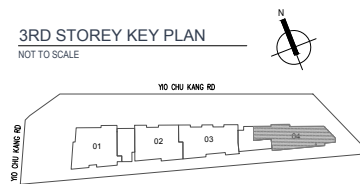
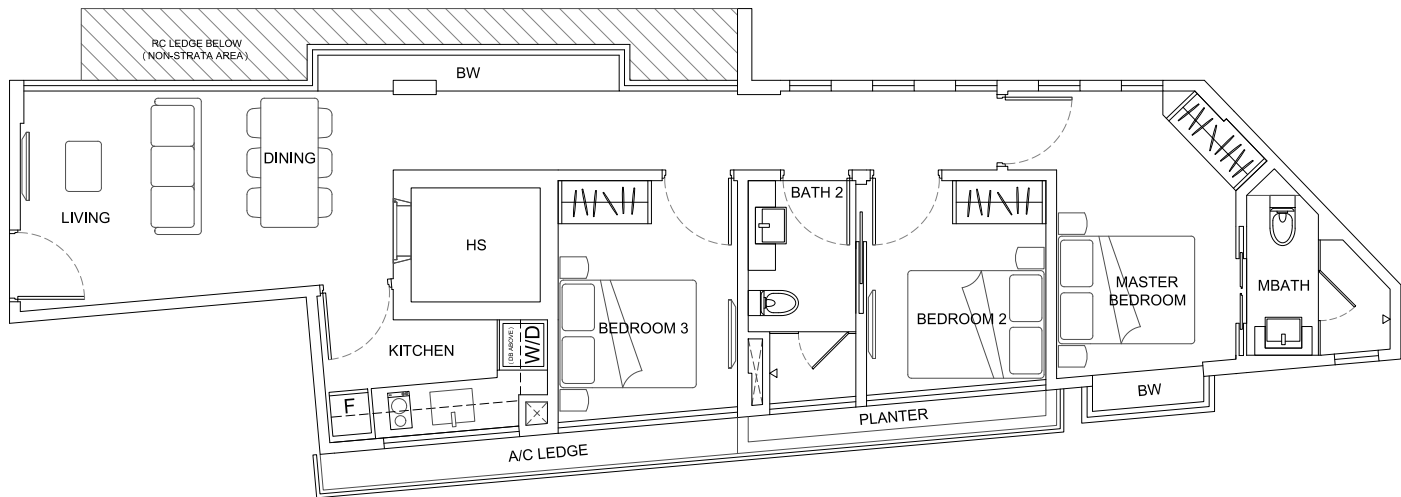
**The balcony shall not be enclosed unless with the URA approved balcony screen. For an illustration of the approved balcony screen, please refer to page 57 of this brochure.

NOTE:
Areas include A/C ledge, balcony, bay window, planter, private roof terrace and strata void area (where applicable). Orientations and facings will differ depending on the unit you are purchasing, please refer to the key plan. Plans are not drawn to scale and subject to change as may be required or approved by the relevant authorities. All areas are estimates only and are subject to final survey.

Type D3 - 3 Bedroom

#03-04, #05-05*

87 sqm / 936 sqft

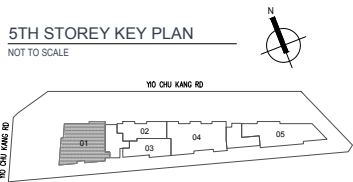
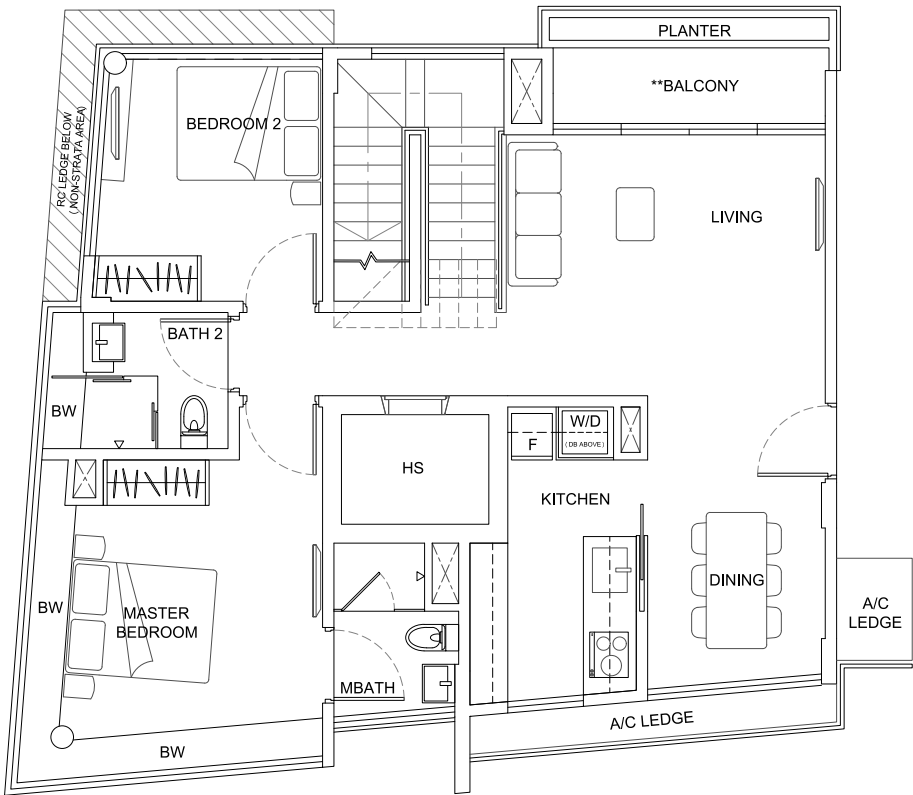


* Ceiling height differs from #03-04. Please refer to ceiling height schedule on page 56 of this brochure.
**The balcony shall not be enclosed unless with the URA approved balcony screen. For an illustration of the approved balcony screen, please refer to page 57 of this brochure.

NOTE:
Areas include A/C ledge, balcony, bay window, planter, private roof terrace and strata void area (where applicable). Orientations and facings will differ depending on the unit you are purchasing, please refer to the key plan. Plans are not drawn to scale and subject to change as may be required or approved by the relevant authorities. All areas are estimates only and are subject to final survey.

PENTHOUSE

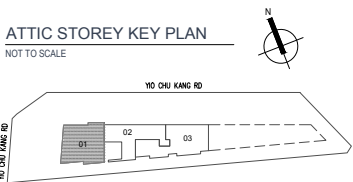
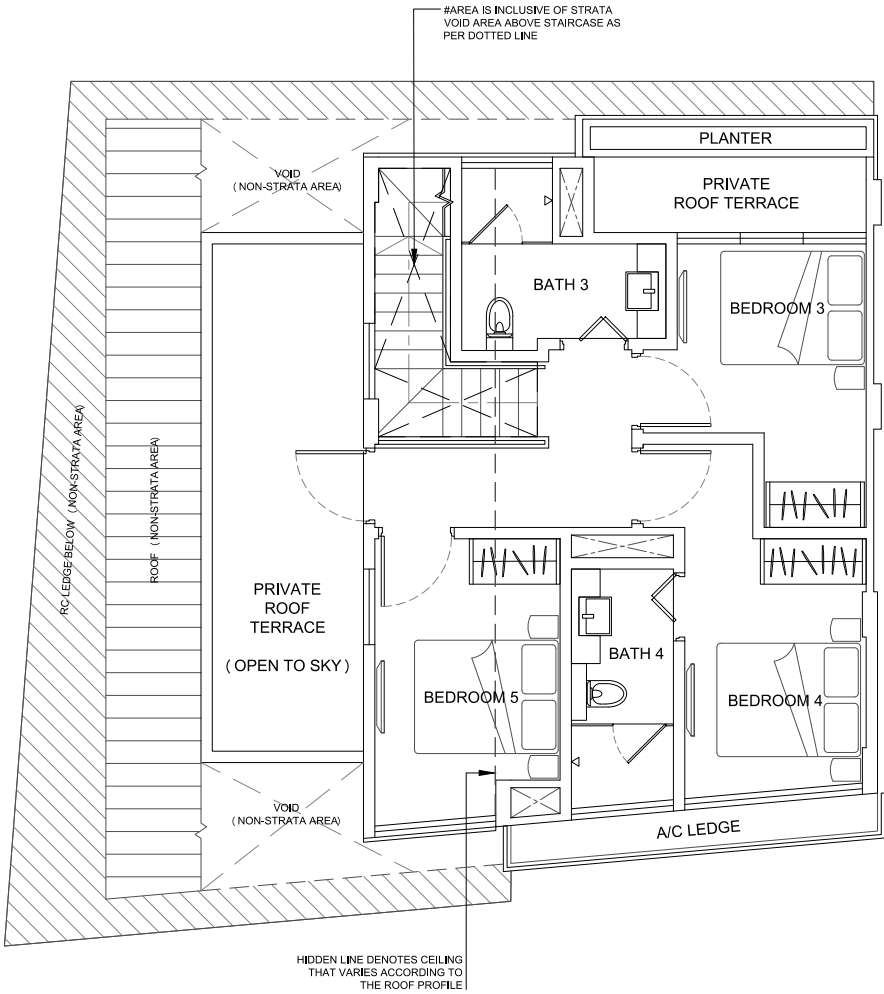
Type PHA - 5 Bedroom
#05-01 (Lower Floor)
177 sqm / 1905 sqft #



**The balcony shall not be enclosed unless with the URA approved balcony screen. For an illustration of the approved balcony screen, please refer to page 57 of this brochure.

NOTE:
Areas include A/C ledge, balcony, bay window, planter, private roof terrace and strata void area (where applicable). Orientations and facings will differ depending on the unit you are purchasing, please refer to the key plan. Plans are not drawn to scale and subject to change as may be required or approved by the relevant authorities. All areas are estimates only and are subject to final survey.

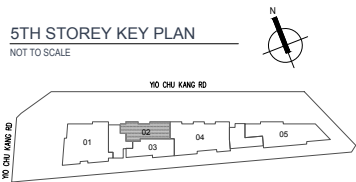
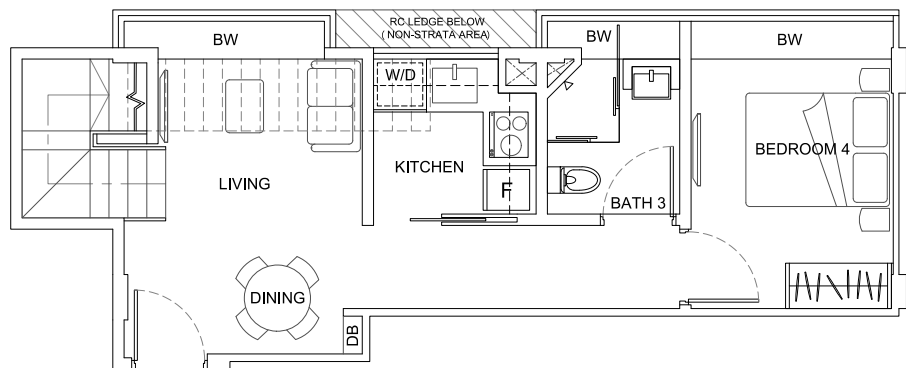
Type PHA - 5 Bedroom
#05-01 (Upper Floor)
177 sqm / 1905 sqft #



**The balcony shall not be enclosed unless with the URA approved balcony screen. For an illustration of the approved balcony screen, please refer to page 57 of this brochure.

NOTE:
Areas include A/C ledge, balcony, bay window, planter, private roof terrace and strata void area (where applicable). Orientations and facings will differ depending on the unit you are purchasing, please refer to the key plan. Plans are not drawn to scale and subject to change as may be required or approved by the relevant authorities. All areas are estimates only and are subject to final survey.

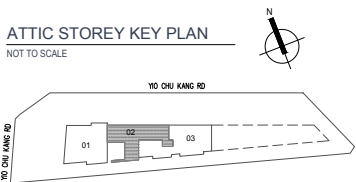
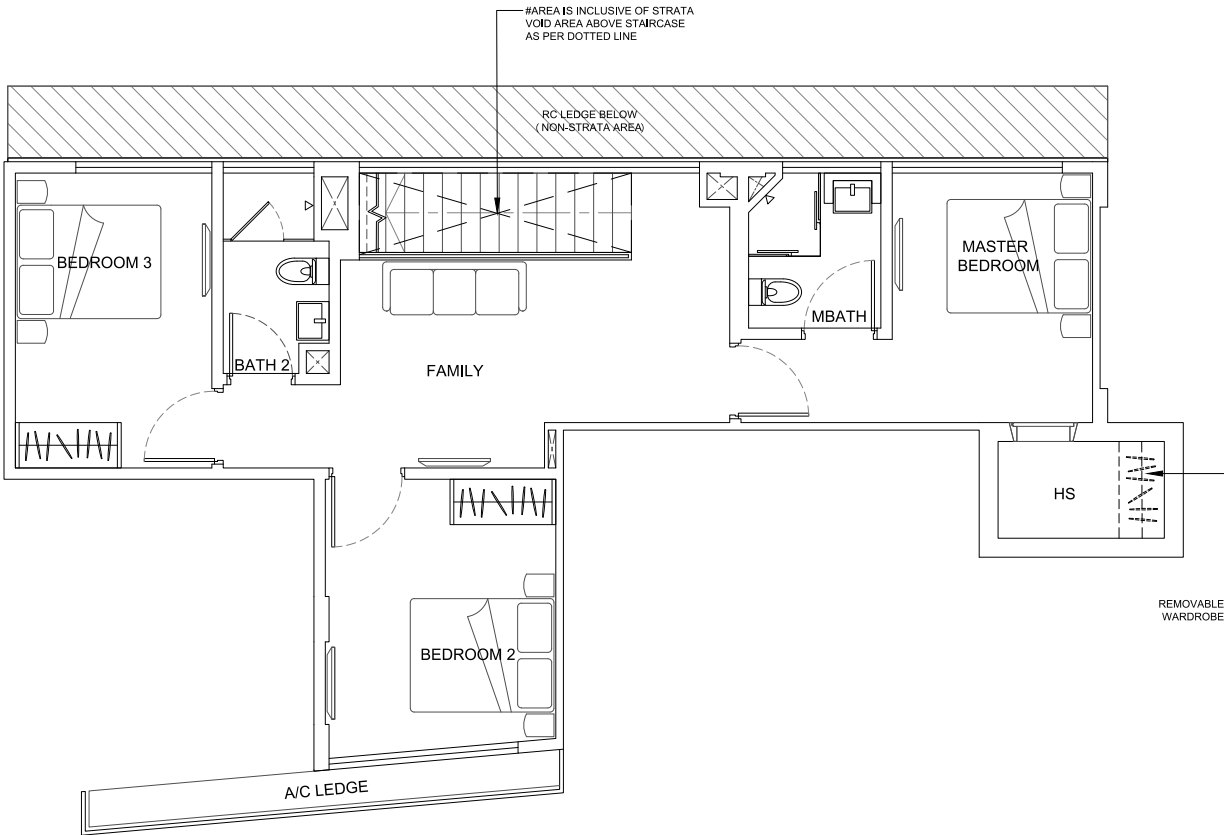
Type PHB - 4 Bedroom + Family
#05-02 (Lower Floor)
122 sqm / 1313 sqft #



**The balcony shall not be enclosed unless with the URA approved balcony screen. For an illustration of the approved balcony screen, please refer to page 57 of this brochure.

NOTE:
Areas include A/C ledge, balcony, bay window, planter, private roof terrace and strata void area (where applicable). Orientations and facings will differ depending on the unit you are purchasing, please refer to the key plan. Plans are not drawn to scale and subject to change as may be required or approved by the relevant authorities. All areas are estimates only and are subject to final survey.

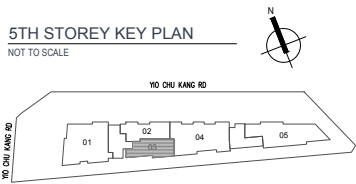
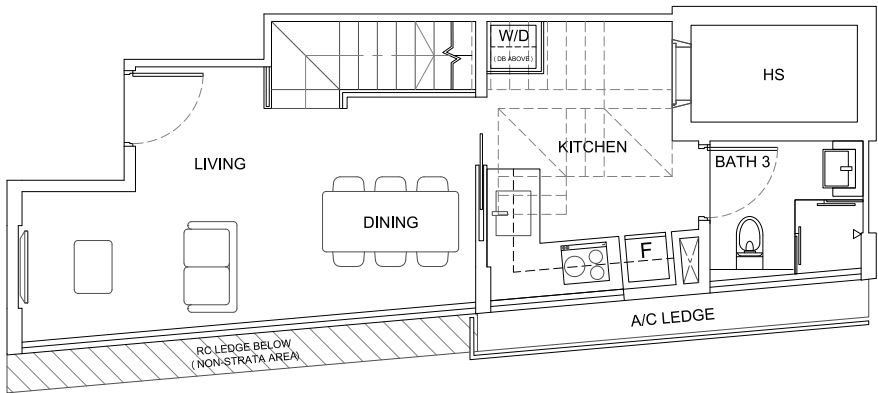
Type PHB - 4 Bedroom + Family
#05-02 (Upper Floor)
122 sqm / 1313 sqft #



**The balcony shall not be enclosed unless with the URA approved balcony screen. For an illustration of the approved balcony screen, please refer to page 57 of this brochure.

NOTE:
Areas include A/C ledge, balcony, bay window, planter, private roof terrace and strata void area (where applicable). Orientations and facings will differ depending on the unit you are purchasing, please refer to the key plan. Plans are not drawn to scale and subject to change as may be required or approved by the relevant authorities. All areas are estimates only and are subject to final survey.

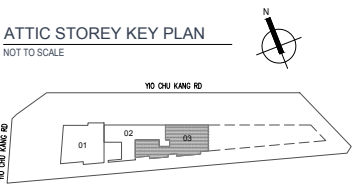
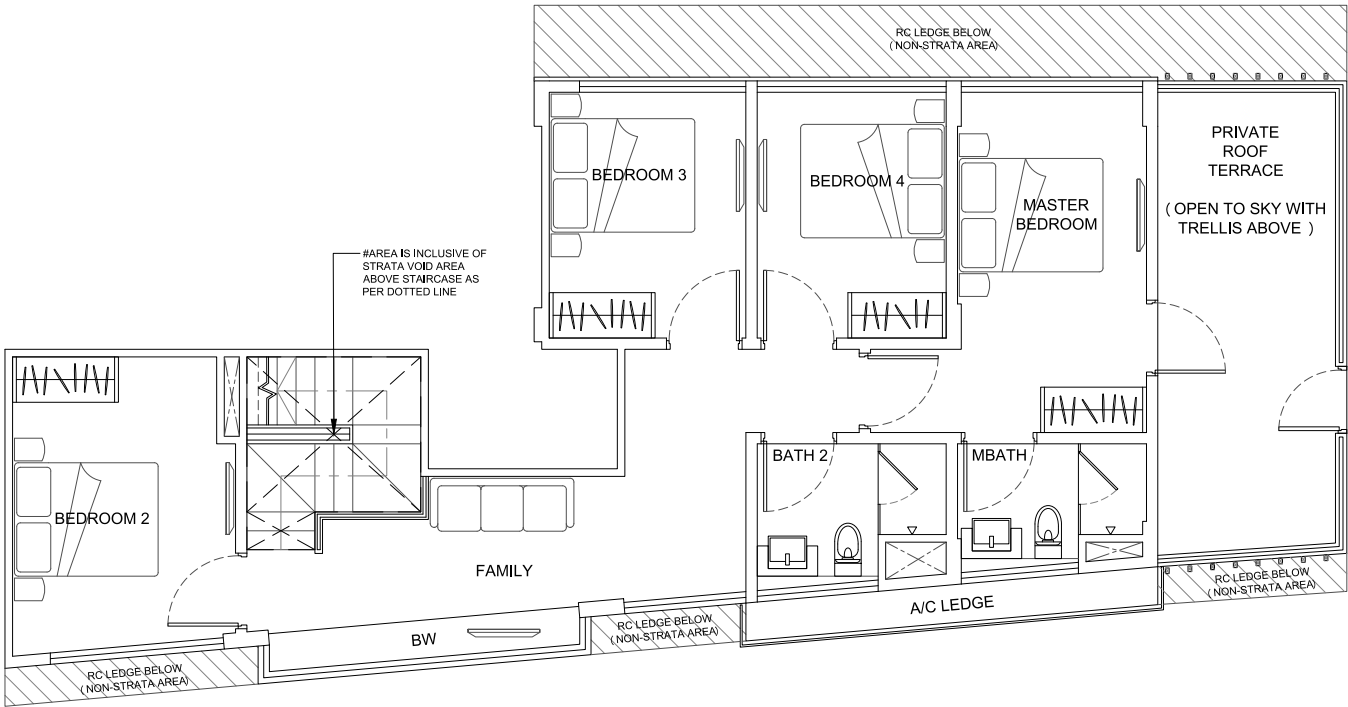
Type PHC - 4 Bedroom + Family
#05-03 (Lower Floor)
144 sqm / 1550 sqft #



**The balcony shall not be enclosed unless with the URA approved balcony screen. For an illustration of the approved balcony screen, please refer to page 57 of this brochure.

NOTE:
Areas include A/C ledge, balcony, bay window, planter, private roof terrace and strata void area (where applicable). Orientations and facings will differ depending on the unit you are purchasing, please refer to the key plan. Plans are not drawn to scale and subject to change as may be required or approved by the relevant authorities. All areas are estimates only and are subject to final survey.

Type PHC - 4 Bedroom + Family
#05-03 (Upper Floor)
144 sqm / 1550 sqft #



**The balcony shall not be enclosed unless with the URA approved balcony screen. For an illustration of the approved balcony screen, please refer to page 57 of this brochure.

NOTE:
Areas include A/C ledge, balcony, bay window, planter, private roof terrace and strata void area (where applicable). Orientations and facings will differ depending on the unit you are purchasing, please refer to the key plan. Plans are not drawn to scale and subject to change as may be required or approved by the relevant authorities. All areas are estimates only and are subject to final survey.